

APRIL 2025

Support our Vision for the Waterloo Freight Hub



The first-of-its-kind Freight Hub at Waterloo Station in the [London Borough of Lambeth](#) got started on Trial Phase 1 a month ago. A long term much-larger multi-modal **Waterloo Freight Hub** could transform logistics across London and support a national shift to a low-carbon freight network and transport system.

There are lots of ways to support CRP and all of its partners to help make this [vision](#) a reality!

- Direct us to funding & sponsorship opportunities
- Offer us funding, sponsorship, skills or knowledge
- Maximise national government support for the Hub
- Advise us on optimal procurement routes
- Spread the word - share plans for the Hub with your network
- Subscribe to CRP's [newsletter](#) to receive regular updates

For more information please contact CRP Project Lead for the Waterloo Freight Hub [Ross Phillips](#).

[Read More](#)

CRP April Roundup

Spring Into Action and Walk this May



CRP's Spring Into Action campaign shares ways in which CRP's HSE II programme partners and the CRP Team are walking and cycling more this spring. Be inspired to find more local gems in London to walk, cycle, wheel or scoot this month!

[Read More](#)

Just Street Pre-Intervention Monitoring Complete



CRP has been busy carrying out valuable pre-intervention monitoring work for it's Just Streets projects! Now complete, this has included lots of observational work to understand how people engage with and use the space, as well as traffic and pedestrian counts.

[Read More](#)

Thank You to Our CRP Interns



My Work Experience at CRP



CRP would like to say a huge thank you to Pooja and Marie, who joined us from [Kings College London](#) and worked across a range of [CRP programmes](#). Their insights and expertise has been hugely valuable - we look forward to seeing what they do next!

[Read More](#)

This month, Emilie Dalle a Year 12 Student at Wimbledon High School joined us for a couple of days to gain experience in the field of sustainability. Read about her experience of working with the CRP Team!

[Read More](#)

The Green Scene

Funding Opportunities for CRP Partners



As part of CRP's ongoing fundraising activities, we continue to review live and upcoming funding opportunities. Here are a few we thought may be of interest to our partners:

EIT - Culture, Shape & Scale Programmes

Supporting the growth of start-ups and scale-ups in the Cultural and Creative Sectors and Industries (CCSI).

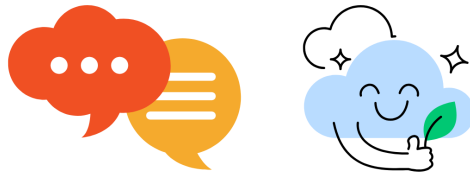
Horizon Europe - ELIAS - European Lighthouse of AI

ELIAS will select 4 SMEs/start ups that will enter the 6-month program and receive up to € 60.000 (lump sum) to develop novel AI-based applications in one of ELIAS focus areas.

[Find Out More](#)

A Need to Improve Air Quality Communications in the UK

AIR QUALITY COMMUNICATIONS



A recent **Air Quality Information System Review Report** published by Defra highlights the need to make air quality data more accessible and recognisable - especially for the communities most at risk.

We need to communicate air quality in smarter, more human ways:

- Simplify the data
- Work with trusted local partners
- Use visuals and storytelling
- Target high-risk groups
- Empower community voices

[Read the Full Report](#)

Study Finds High Air Pollution in Homes



Earlier this year, the University of Birmingham released a Report revealing that air pollution levels in homes can be higher than those found outdoors.

Separately, local authorities are conducting studies of their own to understand the impact of poor indoor air quality. Last year, Westminster City Council used advanced indoor air quality monitors to explore the connections between indoor air quality, health, and socio-economic disparities.

Understanding the relationship between indoor air quality and health is essential, especially since most people spend most of their time indoors! The report provides several recommendations for

reducing indoor pollutants, such as opening windows, using air purifiers and regularly dusting surfaces.

[Find Out More](#)

Sustrans Children's Walking and Cycling Index: Prioritising Children in Active Travel



Sustrans, a charity championing walking, wheeling and cycling, has published the first-ever Children's Walking and Cycling Index. This new initiative builds on the broader Walking and Cycling Index, which tracks active travel progress in 23 cities across the UK and Ireland.

The Children's Index reveals key insights into how children feel about active travel and what is needed for them to travel safely and independently. Based on a survey of over 1,000 children, it found:

- 81% want more traffic-free and quiet routes
- 78% want protected cycle paths separated from cars
- 51% want to cycle more
- 48% already cycle weekly

Sustrans urges councils to prioritise children in transport planning. For example, safer crossings, cycle training, and protected bike lanes can make travel more inclusive and safer for everyone.

[Read More](#)

Dates for your Diary



- **Thursday 15th May** - [Transforming Hercules Road](#). WeAreWaterloo
- **1st - 30th June** - [London Festival of Architecture](#). NLA
- **Thursday 5th June** - [Nature Towns and Cities Conference](#). Nature Towns & Cities
- **7th - 15th June** - [Great Big Green Week](#). The Climate Coalition
- **24th - 25th June** - [Cities Climate Action Summit](#). Smart Cities World



CRP News

CRP Projects

CRP Consultancy

Cross River Partnership is an alliance of Better Bankside BID, Camden Town Unlimited BID, Central District Alliance, City of London Corporation, Eastern City BID, Euston Town BID, Fleet Street Quarter, Greater London Authority, Groundwork London, Harley Street BID, Knightsbridge Partnership, London and Partners, London Borough of Camden, London Borough of Hammersmith and Fulham, London Borough of Islington, London Borough of Lambeth, London Borough of Southwark, Network Rail, Port of London Authority, Royal Borough of Kensington and Chelsea, South Bank BID, Team London Bridge BID, The Northbank BID, Transport for London, Vauxhall One BID, Victoria BID, Westminster City Council.

Copyright © 2025, Cross River Partnership, All rights reserved.

If you have been forwarded this e-bulletin and would like to register, please click [here](#).

[Unsubscribe](#) from this list [Update subscription preferences](#)

Copyright © 2025 Cross River Partnership, All rights reserved.

You are receiving this email, because you have previously signed up to receive news from Cross River Partnership.

Our mailing address is:

Cross River Partnership
64 Victoria Street
Westminster City Hall
London
SW1E 6QP

Want to change how you receive these emails?

You can [update your preferences](#) or [unsubscribe from this list](#).

