

# Smarter Greener Logistics

## Workstream 3

### Kerbside Management

November 2023

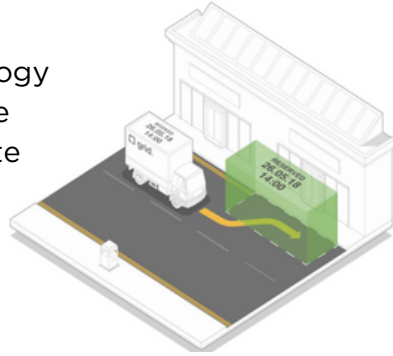


Department for Environment Food & Rural Affairs

CROSS RIVER PARTNERSHIP  
SMARTER GREENER LOGISTICS

### What is Kerbside Management





Kerbside management involves using technology to dynamically manage the kerbside to alleviate congestion and improve air quality.



### What are Kerb-Virtual Loading Bays?





- Digitally created loading bays, which are time, location, vehicle, and use case sensitive. This allows the use of the kerbside without a need for signage or highway markings.
- Loading bay allocations are digitally lifted on to a booking system / app, meaning freight drivers can book slots for kerbside access to deliver goods, improving delivery certainty.
- Enables 21% more deliveries by improving operational efficiency
- It can also help to manage poor air quality hotspots, incentivise the use of cleaner delivery vehicles, and improve traffic flows.

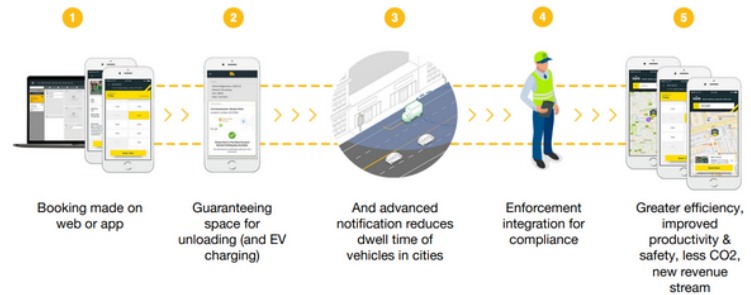
### Benefits of Kerbside Management

-  Increased kerb space availability leads to improved efficiency and reduce risks of penalty charge notices for operators
-  VLBs could generate up to £140 million per annum in revenue for TfL and London local authorities
-  Improvements in congestion levels from reduced circulating vehicles (saves over 3 million hours in wasted delivery driver times per annum)
-  Improvements in air quality from reduced emissions

[Loads Easier \(2021\)](#)

### Workstream 3 Outputs

-  Deliver a Kerbside Management trial led in collaboration with [Grid Smarter Cities](#). This will enable up to 6 local authorities to trial the use of [Kerb-Virtual Loading bays](#) in 2 suitable locations for a 3-month period (maximum of 12 virtual loading bays).
-  Monitor and evaluate the impact of virtual loading bays as part of the trial.
-  Develop resources, workshops and case studies to provide local authorities with further information on kerbside management technology.
-  Understand the benefits / challenges of kerbside management technology to inform future policy and strategies.



Images provided by Grid Smarter Cities

### Resources

- [Loads Easier - dynamic kerbside management](#)
- [Reclaim the Kerb: The Future of Parking and Kerbside Management](#)
- [Grid Smarter Cities website](#)

### Further Information

For further information, please contact Workstream 3 Lead Katherine Fairfax [katherinefairfax@crossriverpartnership.org](mailto:katherinefairfax@crossriverpartnership.org)