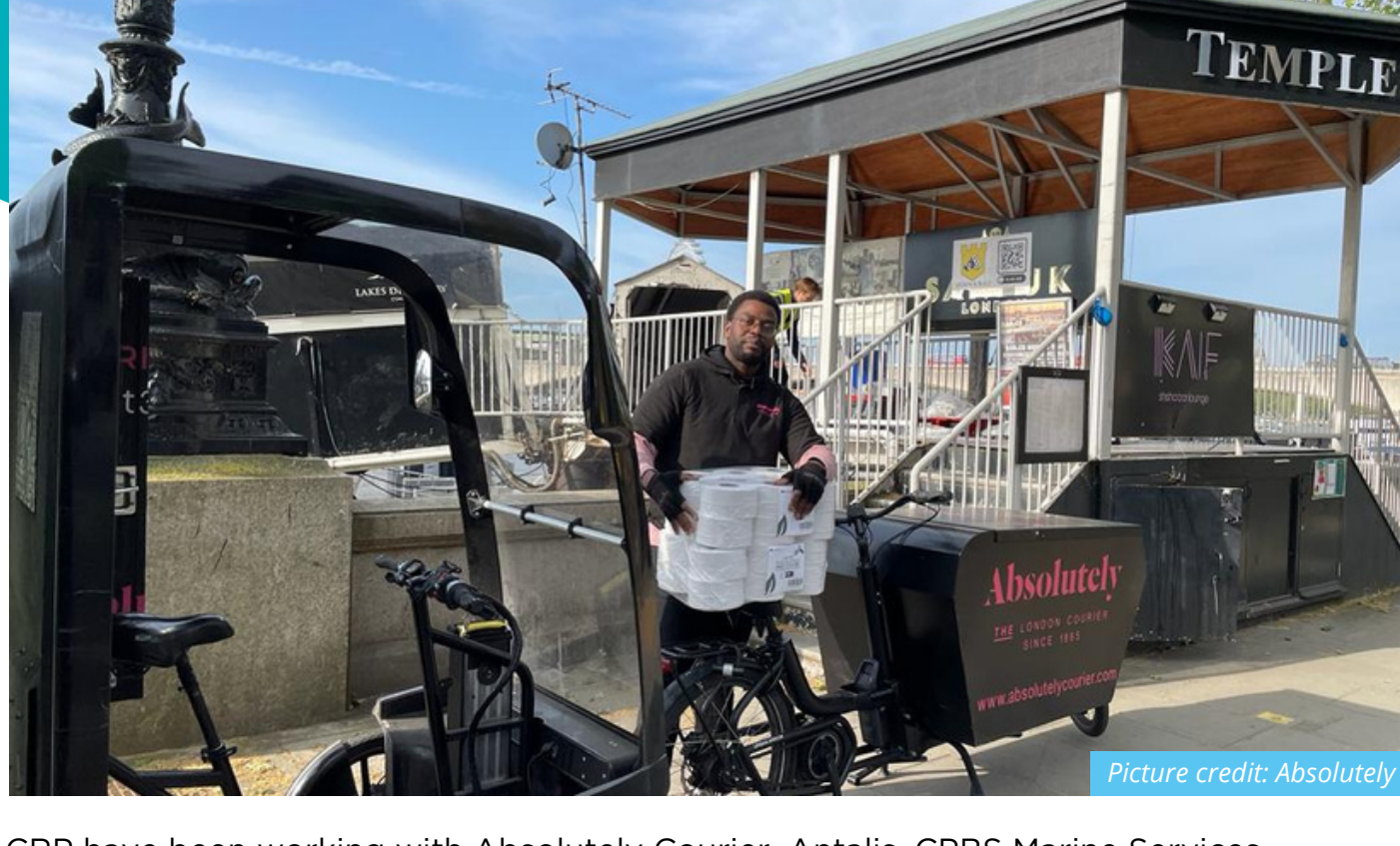




River Freight Pilot Part Two

Scaling Up: Monthly bulk deliveries on the Thames



Picture credit: Absolutely

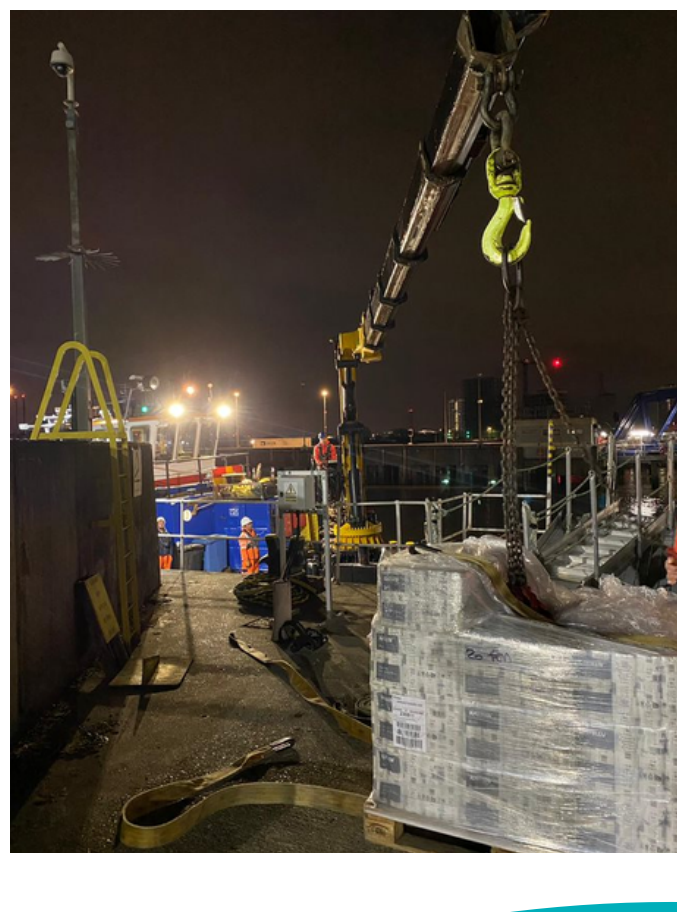
CRP have been working with [Absolutely Courier](#), [Antalis](#), [CPBS Marine Services](#), [Complete](#), TfL London River Services, [Mayflower Washroom Solutions](#), [The Northbank BID](#) and the [Port of London](#) to deliver the River Freight Pilot Part Two - Scaling Up: Monthly bulk deliveries on the Thames. The six-month trial is the second edition of CRP's 2022 [River Freight Pilot](#) and focuses on the monthly bulk delivery of goods to demonstrate the economic viability of river freight.

Monthly bulk deliveries of approx. 5.5 tonnes are loaded at TfL's Woolwich Ferry, Royal Borough of Greenwich, and travel into central London via the River Thames to Temple Pier in City of Westminster. E-cargo bikes, operated by Absolutely Courier, are then used to deliver goods from Temple Pier to end customers in the Northbank area.

Scaling Up

The trial is the second edition of CRP's [River Freight Pilot](#), which operated one delivery per week, for six weeks, over the summer of 2022. The initial river freight pilot aimed to demonstrate the potential of river freight as a viable and sustainable logistics solution. Goods were delivered on the Thames into central London which resulted in a 78% saving in NOx and an 88% saving in CO2 (in comparison to traditional road-based delivery methods).

The River Freight Pilot Part Two builds on learnings from the initial pilot and will be operating one delivery per month, for a period of six months. The change from weekly to monthly deliveries over a longer time period, and increase in volume of goods delivered, aims to demonstrate the economic viability of river freight at-scale for the businesses and suppliers involved. Following the trial, there is an ambition for the service to become a permanent feature of the Antalis, Complete and Mayflower Washroom Solutions logistics operations.

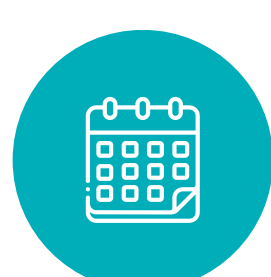


Picture credit: Mayflower

Impacts

"As the Northbank is a river district, with it's boundary extending directly to the river Thames, delivering via the river just makes sense. This hugely collaborative pilot is an important element of the BID's sustainability work and will help organisations in our area reduce carbon, air pollution and congestion."

- Alison Gregory, Head of Placemaking and Sustainability, The Northbank BID



6 monthly trips



5.5 tonnes of goods delivered per trip*



17 kilometres travelled by vessel per trip



4 delivery vans removed per trip*

*Average figures based on first two deliveries

Why Bulk Deliveries?

- Maximising the volume of goods transported through bulk deliveries increases the economic viability and environmental benefits of river freight.
- Bulk deliveries reduce the frequency of vessel trips required and therefore the overall cost of vessel hire making it more economically viable. It also helps to reduce the emissions associated with deliveries as there are less trips being made. Additionally, this helps to reduce congestion.
- Bulk deliveries are a viable option for customers who are able to store goods on site, as exemplified by trial customers Southbank Centre and Somerset House.
- However, this does mean that it can exclude businesses who are not able to store goods on site so will only work for some organisations.



Picture credit: Mayflower

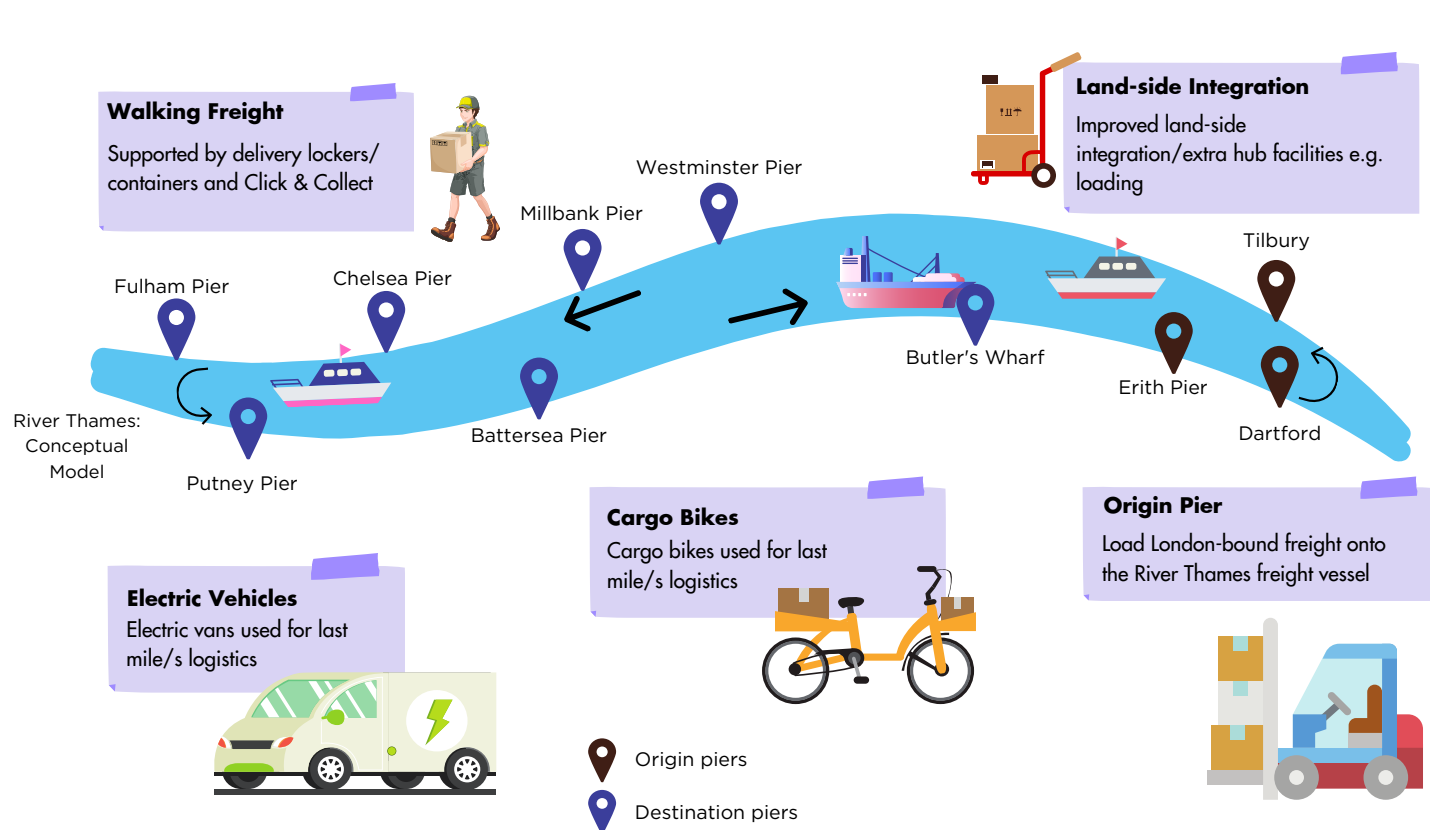


Watch our Northbank Business Question & Answer session to find out how businesses in the Northbank area can get involved with the River Freight Pilot Part Two.

What is Clean Air Logistics for London?

Cross River Partnership's [Clean Air Logistics for London Programme](#) (CALL) is a Defra-funded project led by Westminster City Council in collaboration with 12 project partners. The project aims to move more freight into London via river rather than road, supported by zero emission delivery methods in Central London. CALL will build on the success of CRP's [Clean Air Villages 4](#) programme.

The CALL project will expand river freight in London, reducing both congestion and pollution at the same time. A lack of light freight being moved by river has been highlighted and investment in infrastructure is required to increase the viability of this. CALL locations have been chosen to reflect GLA Air Quality Focus Areas and the importance of the River Thames for freight. The CALL project will support the delivery of [Defra's Clean Air Strategy](#), [Westminster City Council's Air Quality Action Plan \(AQAP\)](#) and other's partners air quality objectives.



Project Partners

Cross River Partnership is proud to be working with the following Local Authorities and other partners.

