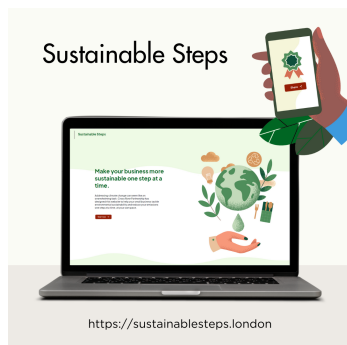


[View this email in your browser](#)



CRP's Reflections on COP27



CRP's Connect 4 Series: Session 11

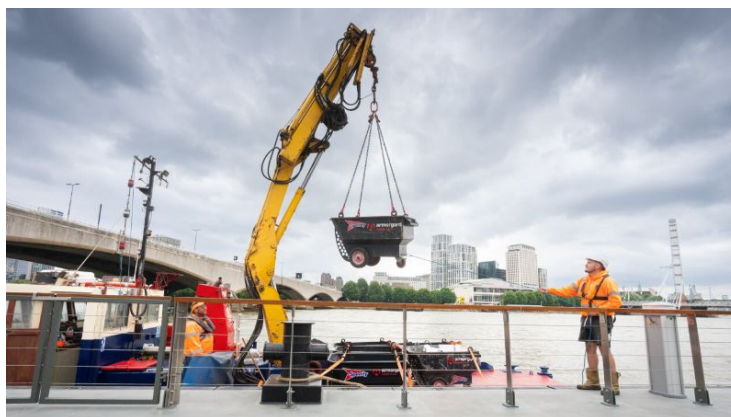
The Innovative
Built Environment

Thursday 24th
November
4pm - 4:45pm



[Register for our next event here!](#)

Clean Air Logistics for London Update



CRP and partners have been working hard to deliver the [Defra-funded Clean Air Logistics for London \(CALL\)](#) project.

Here's some of the things we've achieved over the last few months!

- This month we published our [first CALL case study](#), which details the CRP River Freight Trial! It provides all the key information about setting up a pilot, as well as the amazing impact it had on local emissions.
- Working with [London Borough of Hammersmith and Fulham](#) to develop a sustainable deliveries hub at the [Chelsea Harbour Estate](#). The hub has been

approved and we are hoping to install the infrastructure in January ... watch this space!

- We have identified two potential vessels to retrofit and are in the process of finalising the details.
- Working with [London Borough of Lambeth](#) to support their electric vehicle (EV) charging strategy, providing funding for EV chargers across the borough.
- Working with the [Port of London Authority](#) to reinstate the [Woods Quay River Freight Trial](#) to carry out monthly deliveries at much larger volumes. We are hoping the trial will restart early in the new year.
- Working with [The Fitzrovia Partnership](#) to carry out a walking freight trial. We have been given all the relevant permissions from [London Borough of Camden](#) and the [Metropolitan Police](#). We have also identified several potential spaces to run the trial!
- We have been working with [Westminster City Council](#), [London Borough Islington](#) and [London Borough of Southwark](#) to identify potential micro hub sites. Sites have been found in all three boroughs and we are now looking to set up trials.

For more information, please contact CRP Programme Manager Fiona Coull (fionacoull@crossriverpartnership.org).

Turning Black Friday Green in Brixton



Product deliveries this Black Friday is expected to generate 429,000 metric tonnes of emissions this year – the same as 435 return flights from London to New York! (Source: Waste Managed).

CRP's storage and cargo bike scheme is supporting Brixton's businesses to reduce the number of deliveries participating businesses get into central London by enabling them to bulk-buy, and increasing cargo bike deliveries from our storage location to our clean air champion businesses in Brixton.

Some of these brilliant Brixton businesses include:

- [Brixton Brewery](#), who are receiving Amazon parcels
- Flowers and homeware delivered to [Stems Wilder](#)
- Cleaning supplies to [3Space](#), where Brixton BID are also hosted
- Deliveries of cases of beer to [Rudie's Jerk Chicken](#) in Boxpark and Mercato Metropolitano, from brewery [Friendship Adventure](#) via the micro hub

You can still sign up if you are a business in Brixton by contacting CRP Senior Project Officer Isidora Rivera Vollmer isidorariveravollmer@crossriverpartnership.org/07929 868 879.

CRP's Data Analysis Services



CRP is building on the success of its cross-project monitoring programme by offering bespoke, value-for-money data analysis services to unlock the potential of your traffic data.

By providing in-depth analysis that is tailored to your needs, CRP can help to provide the proof of concept for local initiatives whilst enabling evidence-based decision making for both you and your stakeholders.

Interested in finding out more about CRP's data analysis services and how this could benefit your organisation? Please get in touch with CRP Programme Manager Fiona Coull (fionacoull@crossriverpartnership.org).

[Find Out More](#)

Plans for a New Sustainability Hub in Chelsea Harbour



Over the past few months, CRP has been working with [London Borough of Hammersmith & Fulham](#) and [Chelsea Harbour Estates](#) to create a new sustainability hub near Chelsea Harbour Pier.

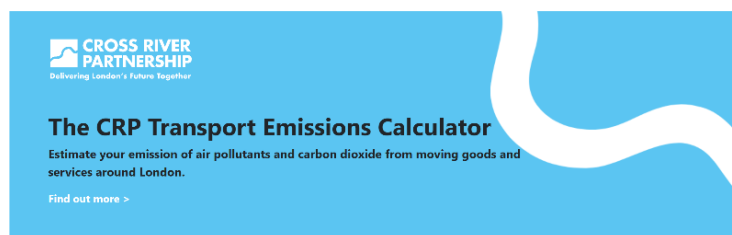
Landowner Chelsea Harbour Estates have agreed to repurpose two underused car parking spaces for this project. The sustainability hub will include a [Delivering London](#) parcel locker (with a Legible London map) and two cargo bike parking bays with Sheffield stands.

The sustainability hub on the Chelsea Harbour Estate has the potential to support future river freight operations from Chelsea Harbour Pier, whilst also supporting the estate and their residents with deliveries.

CRP has already organised site visits with the parcel locker and Sheffield stand providers, as well as received quotes from floor marking providers.

For any questions about this project, please email CRP Senior Project Officer Isidora Rivera Vollmer (isidorariveravollmer@crossriverpartnership.org).

Transport Emissions Calculator



CRP recently launched the [Transport Emissions Calculator](#) (TEC), a tool to help London drivers and fleet operators in London estimate the impact of their trips on air quality. It was developed as part of the [Defra](#)-funded [Clean Air Villages 4](#) programme

The Calculator uses [Defra's emissions factor toolkit](#) to help users assess how much carbon dioxide, nitrous oxides and particulate matter is produced by their road journeys. It also estimates how rail and river journeys affect local air quality.

Ideally, the tool will inform users looking to inform their decision to

- Consolidate their trips so that they make fewer journeys
- Switch their trips from peak travel time to off-peak hours); or even
- Change to a zero- or low-emission mode of transport such as an electric vehicle or a cargo bike

The TEC also allows users to vehicle counts from traffic data in a specific London borough to estimate emissions generated by local traffic. This could be useful to measuring how effective traffic reduction interventions (for example, school streets) are by comparing before and after results.

[Try the calculator](#) or contact CRP Project Manager Sefinat Otaru (sefinatotar@crossriverpartnership.org) if you would like to carry out a more detailed analysis!

CRP's Transport Emissions Calculator

Unlocking the Benefits of Urban Green and Blue Spaces



More than 55% of the world's population live in urban areas, and in many countries the figure is much higher. For example in the UK, 83% of people live in urban areas. In June 2022, the [Natural Environment Research Council](#) (NERC) led three international workshops to scope a new [Belmont Forum](#) collaborative research action on '[unlocking the benefits of urban green and blue spaces](#)'. The NERC is now using the workshop outputs to draft a call document for a Collaborative Research Action (CRA) which will be presented to the Belmont Forum in late October. If the call text and CRA are approved we would anticipate funding calls to be launched in 2023 ... watch this space!

[Click here for more information](#)



Dates for your Diary



Thursday 24th November, 4pm - 4:45pm. [CRP's Connect 4 Series, Session 11: The Innovative Built Environment](#). Cross River Partnership, NLA and BusinessLDN.

Tuesday 29th November, 9:30am - 3:30pm. [A New Era for Green Infrastructure?](#) Town and Country Planning Association.

Tuesday 29th November, 6pm - 9pm. [BEF Sustainability Sandbox Session: Resilient Communities](#). Buro Happold and Allies and Morrison.

Wednesday 30th November, 2pm - 6pm. [Shaping sustainable innovation through collaboration, with Plus X](#). Plus X Innovation Hubs.

Thursday 1st December, 12pm - 1:30pm. [Training session on Corporate Sustainability](#). Ceri Schooling.

Thursday 1st December, 7pm - 8pm. [London - People, Planet, Pint: Sustainability Meetup](#). People Planet Pint collection.

Thursday 8th December, 4pm - 4:45pm. CRP's Connect 4 Series: Session 12.

Tuesday 13th December, 2pm - 5:30pm. [The London Sustainability Forum](#). Royal Society for Arts and King Stage.

Wednesday 1st February, 6pm - 8pm. [Design and Engineering for Sustainability and Circularity](#). LSBU.

Cross River Partnership is an alliance of Angel London, Better Bankside BID, Brixton BID, Cadogan, Camden Town Unlimited BID, Central District Alliance, Cheapside Business Alliance, City of London Corporation, Eastern City Partnership, Euston Town BID, Fleet Street Quarter, Greater London Authority, Groundwork London, Hammersmith BID, Hatton Garden BID, London and Partners, London Borough of Camden, London Borough of Hammersmith and Fulham, London Borough of Islington, London Borough of Lambeth, London Borough of Lewisham, London Borough of Southwark, Network Rail, Port of London Authority, Royal Borough of Kensington and Chelsea, South Bank BID, Team London Bridge BID, The Fitzrovia Partnership BID, The Northbank BID, Transport for London, Vauxhall One BID, Victoria BID, Westminster City Council.

Copyright © 2022, Cross River Partnership, All rights reserved.

If you have been forwarded this e-bulletin and would like to register, please click [here](#).

[Unsubscribe](#) from this list [Update subscription preferences](#)

Copyright © 2022 Cross River Partnership, All rights reserved.

Want to change how you receive these emails?

You can [update your preferences](#) or [unsubscribe from this list](#).