

# CONNECT 4: SESSION 9

## GOOD PARKS FOR LONDON REPORT LAUNCH

### Speaker

Ross Phillips  
Tony Leach  
Julian Woolley  
Julia Thrift  
Councillor Catherine Rose  
Rachael Aldridge

### Organisation

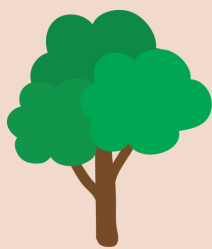
Cross River Partnership  
Parks for London  
GL Hearn  
Town and Country Planning Association  
London Borough of Southwark  
Cross River Partnership

Congratulations to London Borough of Southwark, London's Top Performing Borough 2022! Click to watch the session:



## KEY FACTS

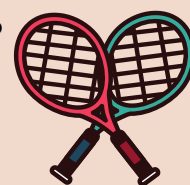
London Borough of Southwark has a long history of welcoming and supporting many community volunteer initiatives across its parks and open spaces. These projects help to maintain and support many of the borough's 64 sites of importance for nature conservation (SINCs), 96 hectares of woodland, and over 300 parks and green spaces.



Even small percentage land value uplifts in central London occurring from public realm improvements can lead to substantial welfare gains.



Local data from Sport England, within Royal Borough of Greenwich, surveys for the years ending May 2020 and May 2021 shows a positive increase locally in physical activity levels. Survey results show a 5% increase in active people and over 1% decrease in inactive people.



## RESOURCES

[CRP's Connect 4 Series: Session 9 Presentation slides](#)

[Good Parks for London 2022 Report](#)

[Funding Healthy Streets Assets Report](#)

[Clean Parks for London Campaign](#)

[Green Infrastructure Partnership](#)

[Sign up to Parks for London's Supporter e-Updates](#)

[CRP's Annual Report and Business Plan](#)

[Click here to sign up to CRP's next session London's Climate: The Role of Active Travel Thursday 20th October 2022, 4pm - 4:45pm](#)

Q: How do you choose or engage with businesses who have innovate change ideas regarding community engagement for litter and dog fouling?

A: Engaging with businesses at the corporate level is a challenge for local authorities but it is sometimes easier to work with local businesses surrounding parks in association with friends groups. Eco Green Communities featured in the [Good Parks for London 2022](#) report on page 86 offer an alternative route to brokering these types of initiatives.

Q: Do you believe that enforcing litter dropping with fines will help?

A: Fines can act as a deterrent to littering but few councils have the resources to employ enforcers. See pages 70–73 of the [Good Parks for London 2022](#) report for the case study about Sutton's trial to reduce littering in parks, including a novel approach to enforcement.

Q: Is there scope to create new parks in London as part of major area developments?

A: [The London Plan](#) sets requirements on all new development above a certain level to provide green space to obtain permission to build and each local authority sets its own requirements in its Local Plan. Providing new green spaces in developed area is a challenge and there is a trend to provide more vertical planting and roof planting to provide urban greening but the latter often have restricted access.

[CPRE London](#) are running a campaign to provide 10 new parks in London.

Q: In terms of awareness raising regarding litter, is there scope to work with schools/education establishments?

A: [Keep Britain Tidy](#) run their [Eco-Schools](#) programme for this very purpose.