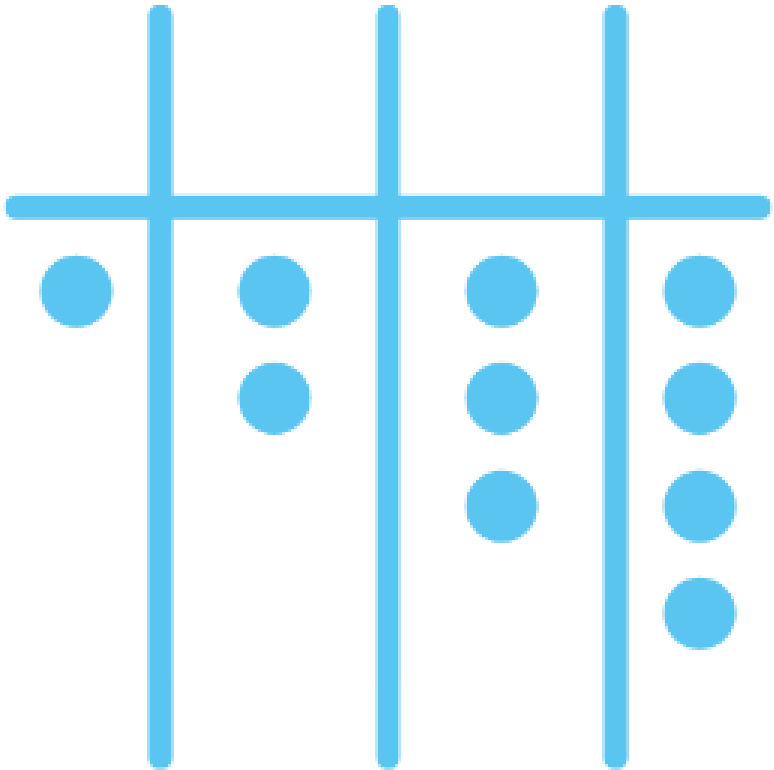


CRP's Connect 4 Series: Session 9

Good Parks for London Report Launch



CRP's Connect 4 Series



SUPPORTED BY
MAYOR OF LONDON



Today's Agenda



Ross Phillips



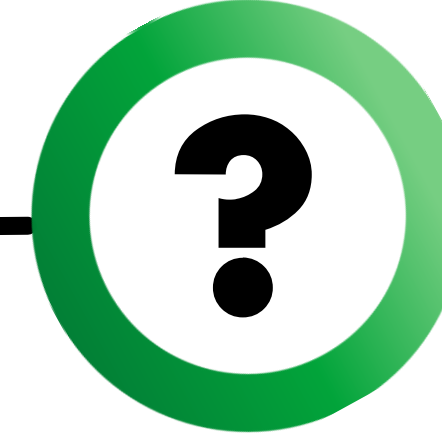
Tony Leach



Julian Woolley



Julia Thrift



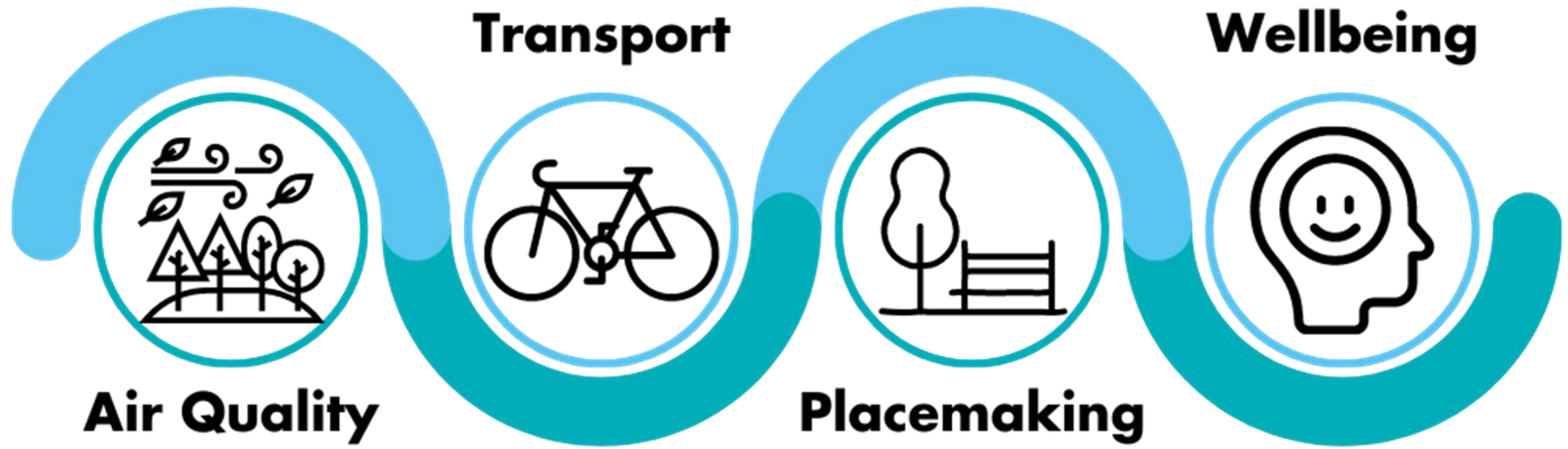
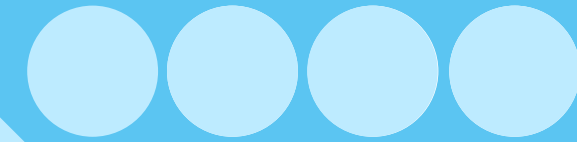
**London's top
performing
borough**



**Discussion
and
questions**

**Please post your
questions and
thoughts throughout
this session in the chat
box**





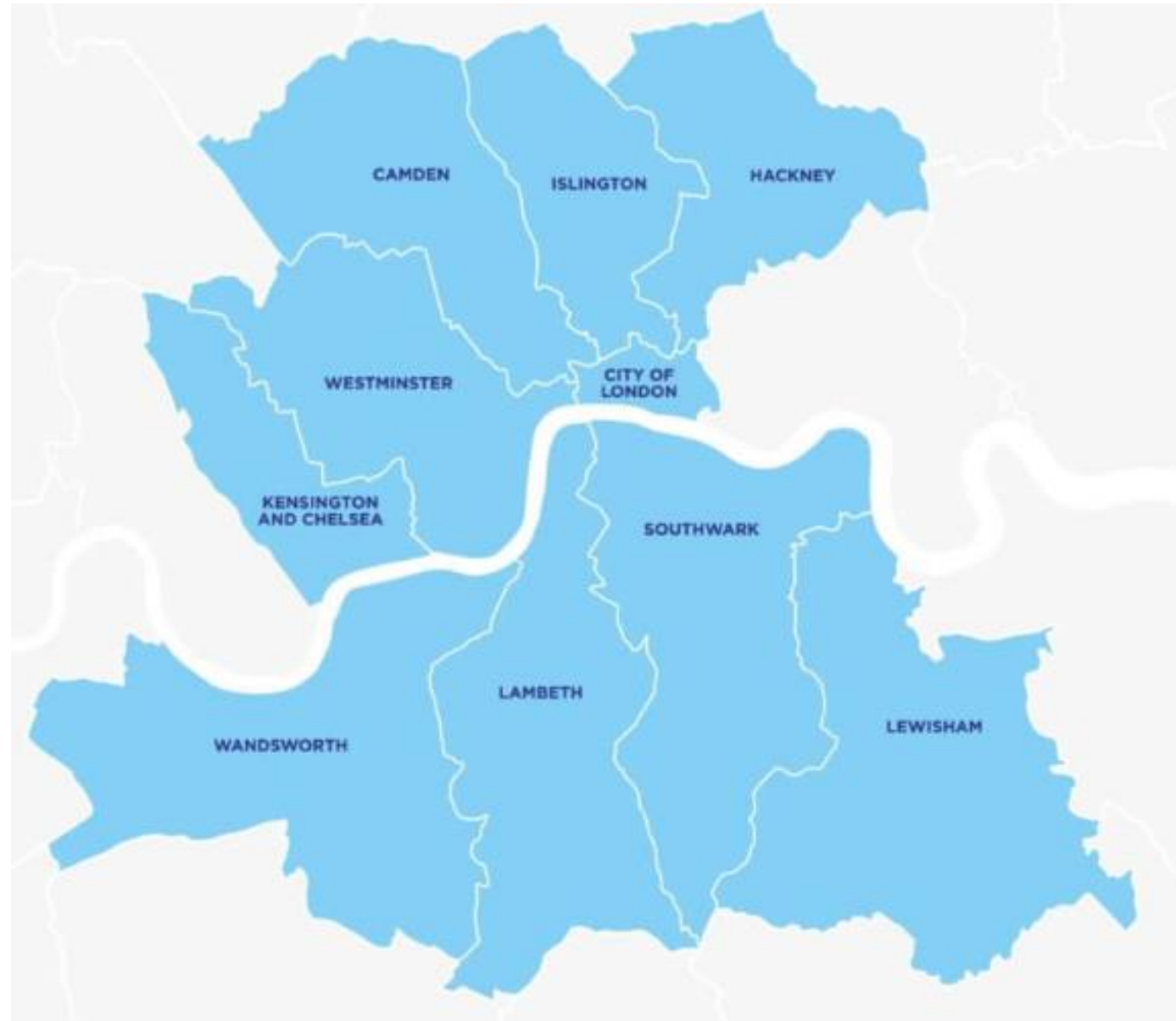


Speaker 1

Ross Phillips

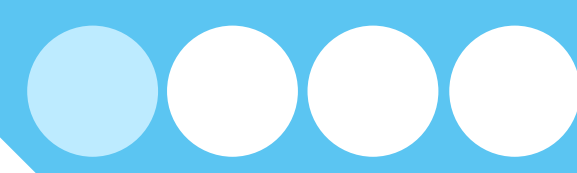


Central London Sub-Regional Transport Partnership



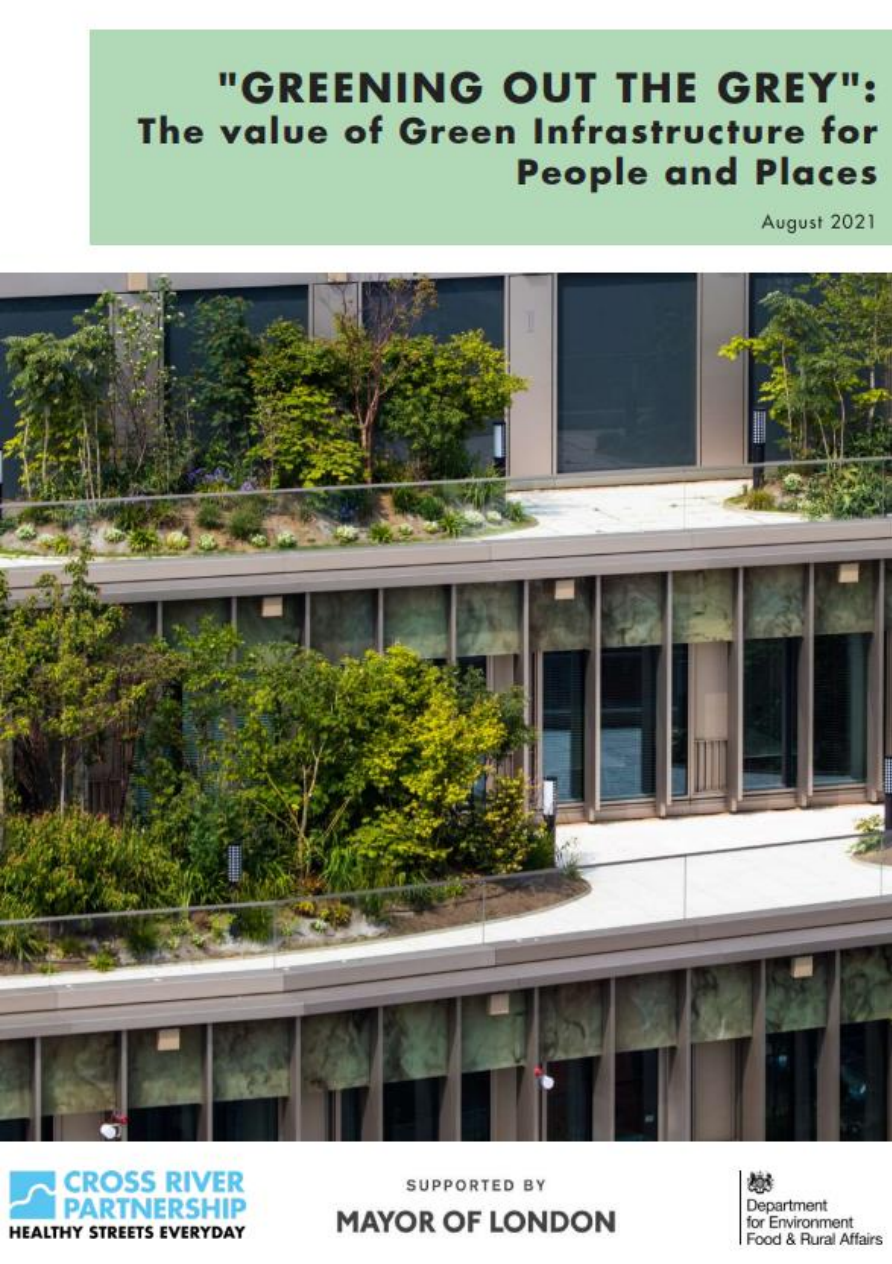
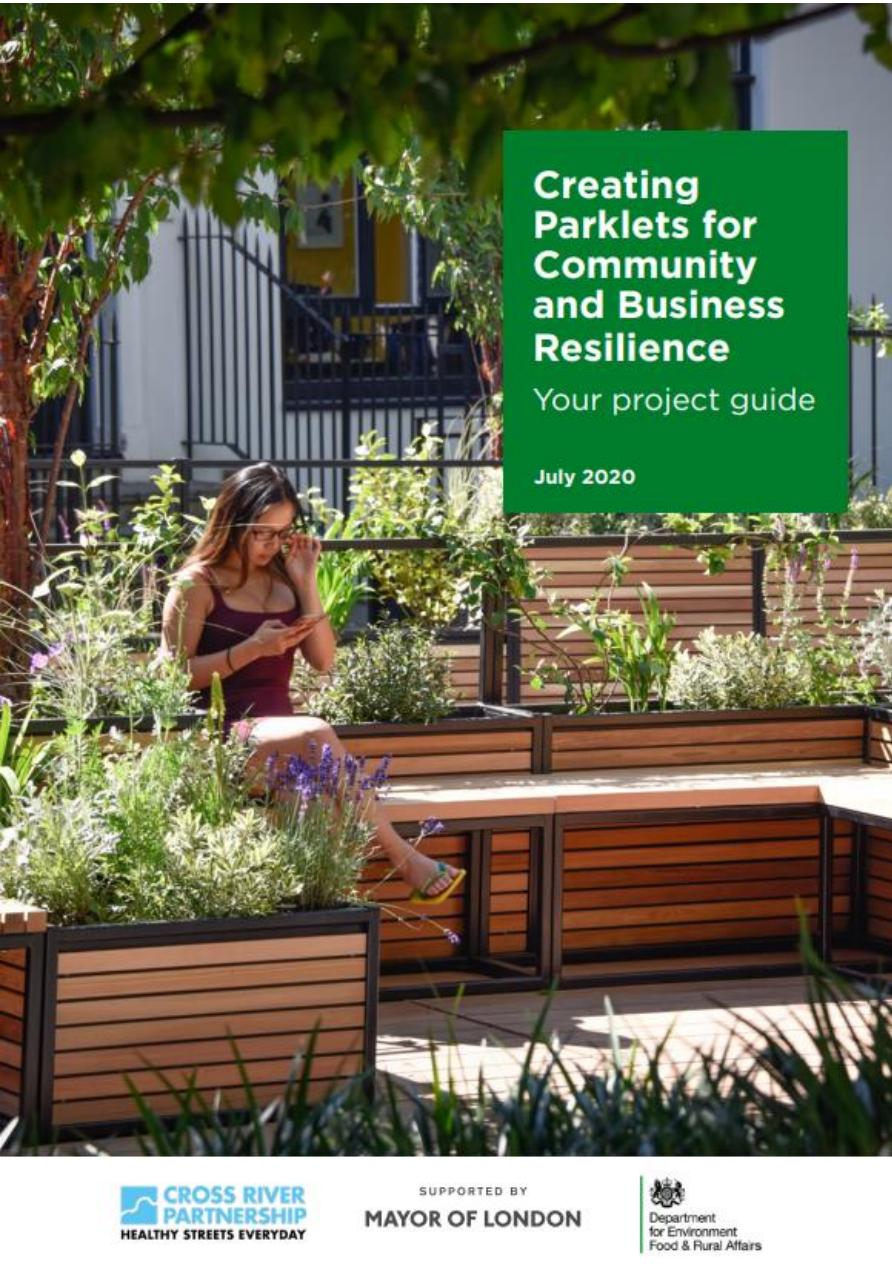
- The Central London Sub-Regional Transport Partnership enables collaboration and information-sharing between partner boroughs on key sub-regional transport priorities.
- Range of projects, from innovative pilots and trials to forward-thinking research and strategy.

Healthy Streets Everyday



CRP's Healthy Streets Everyday was a Mayor's Air Quality funded project to empower boroughs, businesses and communities across London to deliver pedestrian-priority healthy streets, increase walking rates and reduce emissions and exposure to toxic air.

Reports and Outputs



Collaborative Funding for Healthy Streets

- Increased collaboration with public and private sector
- ESG and public/private-owned space blurring
- Momentum Transport Consultancy and Volterra commissioned to research and provide recommendations and learnings
- Looks at both funding AND maintenance

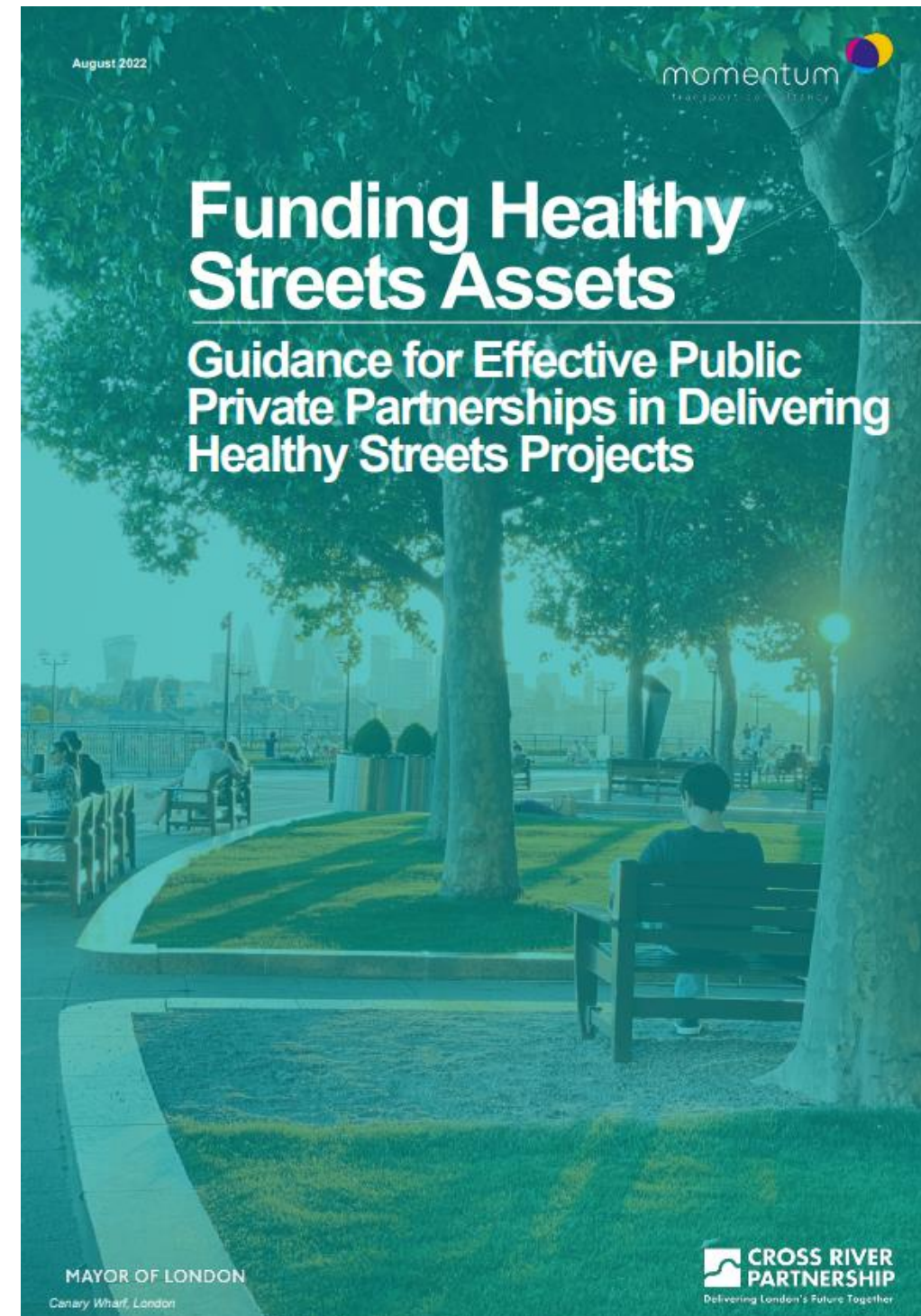


Figure 5: Word Cloud of Round Table Quotes

August 2022 Case Studies Report by: Momentum Transport Consultancy Volterra

5. Case Studies

Introduction

The following case studies are presented to showcase examples of successful public realm interventions which local authorities can refer to in discussions on funding for future schemes. The evidence has been drawn from existing reports and evaluations, and the methodology for assessing and monetising any impacts varies between the studies based on the information available. As shown in Figure 6, both central and non-central London examples have been selected to cover a range of contexts.

The case study methodology is provided in Appendix 2 and full case study write up (including references) in Appendix 3.

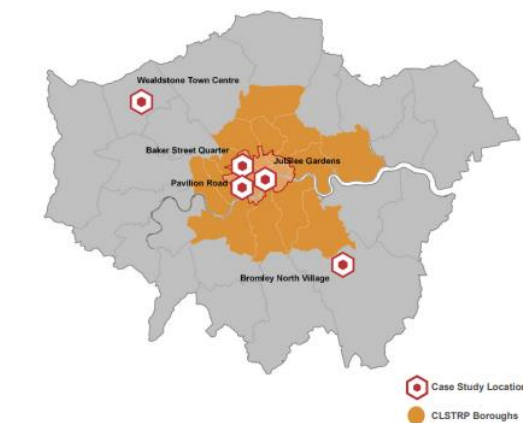


Figure 6: Map of Case Study Locations

SUPPORTED BY MAYOR OF LONDON

33

CROSS RIVER PARTNERSHIP Delivering London's Future Together

Methodology and Analysis



Figure 5: Word Cloud of Round Table Quotes

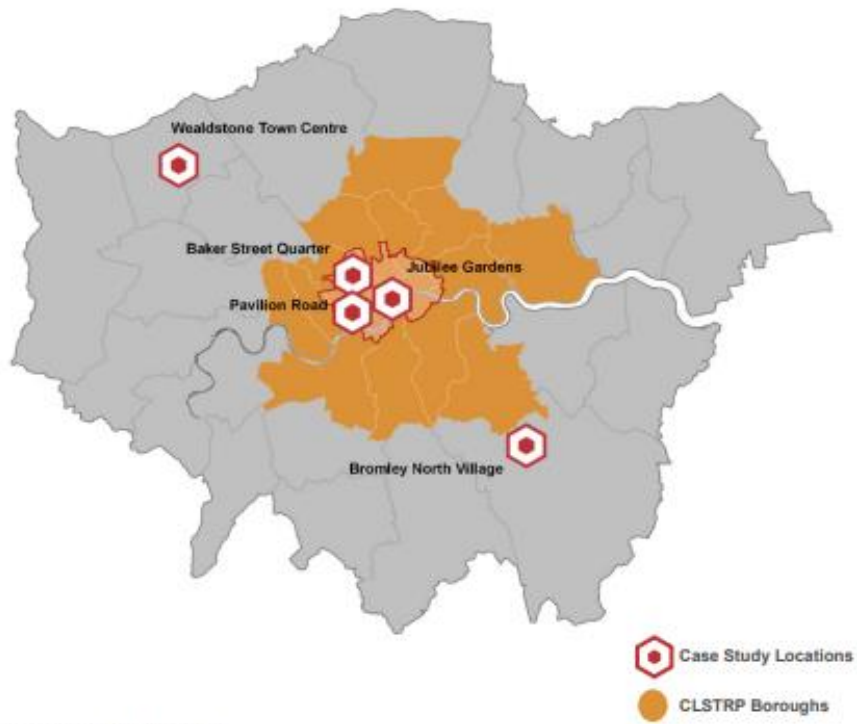
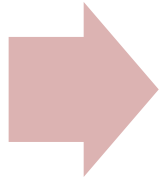


Figure 6: Map of Case Study Locations

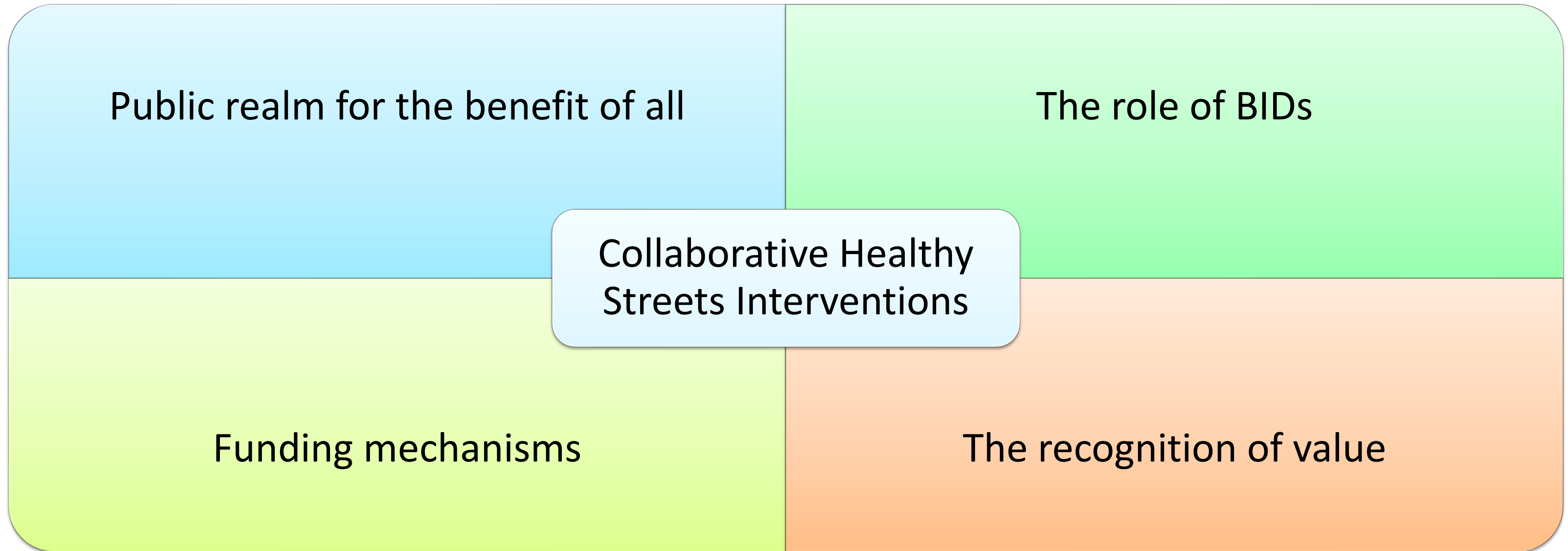
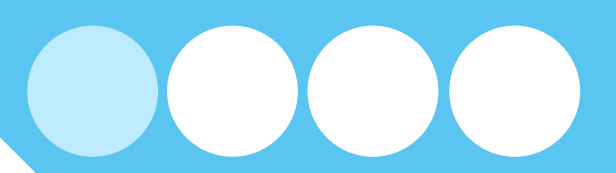
Developer
and
Landowner
Roundtable

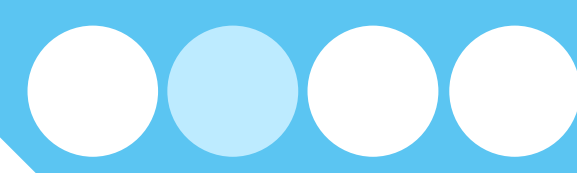


Quantitative
analysis of 5
case studies

Recommendations
and Learnings

Recommendations and Learnings



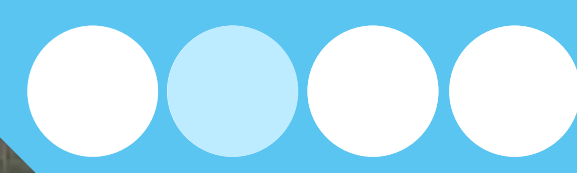


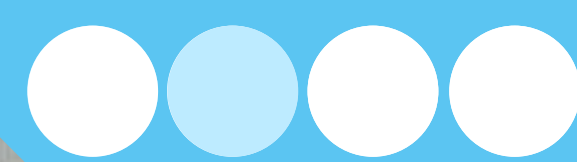
Speaker 2

Tony Leach



Parks for
London







Parks for
London



GL Hearn



**CROSS RIVER
PARTNERSHIP**

Delivering London's Future Together

SUPPORTED BY

MAYOR OF LONDON



Department
for Environment
Food & Rural Affairs



Parks for London

@ParksforLondon



It costs taxpayers £14.8m every year to clean up [#London](#)'s parks. What a waste! Help us [#KeepParksClean](#) and tell us and your local candidates where you rather see the money be spent on. New park facilities, outdoor gyms and community programmes? Think big! 💡💬 [#CleanParksforLondon](#)

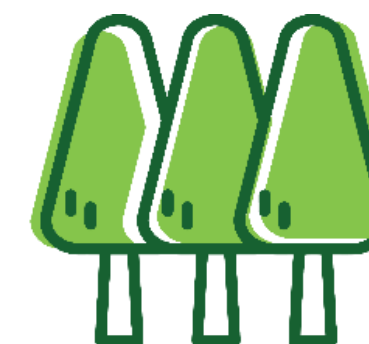
Every year, £14.8 million of taxpayer money goes into clearing up litter in our parks and green spaces. Let's find a better use for it.

Take your rubbish home



LDNMayor Environment and 7 others

11:30 AM · Apr 12, 2022 · Twitter Web App



Clean Parks for London

pan-London campaign



Parks for
London



GL Hearn



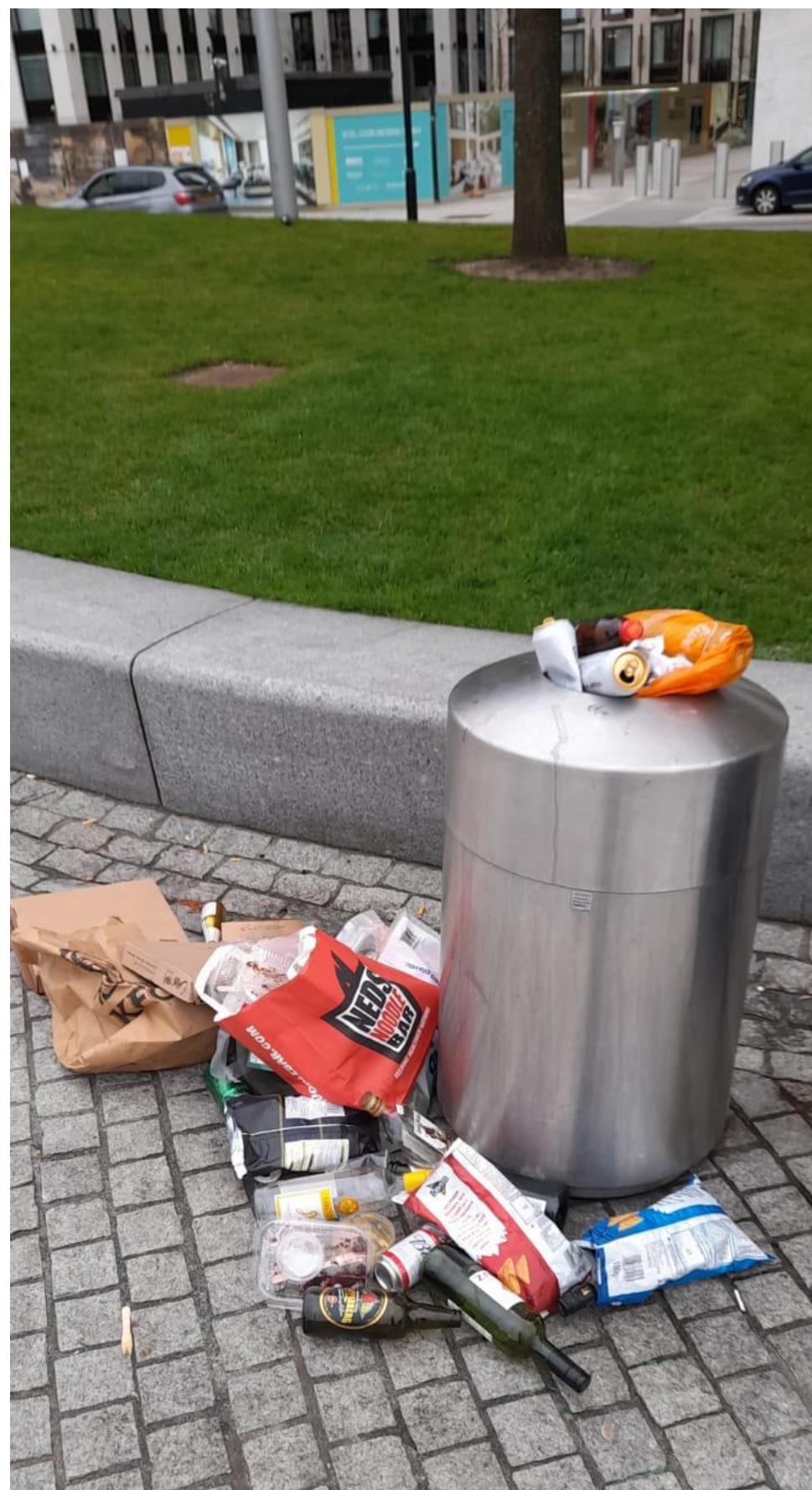
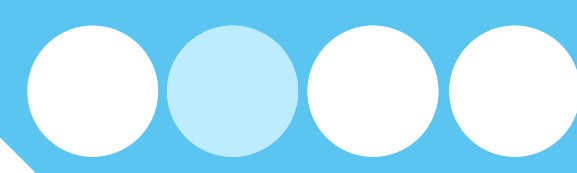
**CROSS RIVER
PARTNERSHIP**

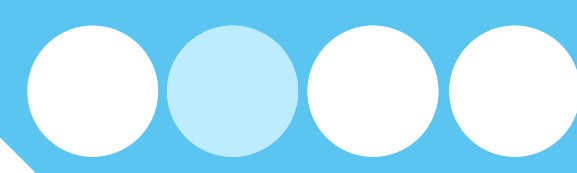
Delivering London's Future Together

SUPPORTED BY
MAYOR OF LONDON



Department
for Environment
Food & Rural Affairs





Green Space Litter and Waste Management Action Group

1. minimise the amount of waste and litter generated in parks & green spaces
2. maximise the amount of litter recycled
3. minimise the cost of collecting and disposing of waste and litter
4. review processes to deal with waste & litter more efficiently
5. encourage people not to litter but to take waste home
6. support litter-picking volunteers
7. improve enforcement to act against those who litter

“The limited funds available for running London’s parks and green spaces are too valuable to be thrown away.”

Julia Thrift

GOOD PARKS FOR LONDON 2022

Keeping Parks Clean



Parks for
London

Sponsored by



GL Hearn



Parks for
London



GL Hearn



**CROSS RIVER
PARTNERSHIP**

Delivering London’s Future Together

SUPPORTED BY
MAYOR OF LONDON



Department
for Environment
Food & Rural Affairs

Part two

London boasts more than 3,000 parks and green spaces but few are spared from the scourge of litter, costing landowners millions to clean up.

Beyond the financial toll, littering also has environmental and public health implications. When litter is disposed with general waste it cannot be recycled and either ends up in landfill or is incinerated, becoming a source of environmental pollution affecting water, soil, and air. Improperly discarded litter not only attracts vermin, making it unpleasant and a health hazard, it can also find its way into waterways, rivers, and oceans, harming wildlife, people, and ecosystems.

Research shows that high levels of litter can make people feel unsafe and dissuade them from visiting public green spaces for leisure and recreation, socialising, or other activities—potentially undermining their physical and mental health and wellbeing. Further litter in public spaces attracts more litter and potentially other anti-social behaviours or crimes in what researchers refer to as ‘the spreading of disorder’. Hence, interventions that reduce littering could reap big societal benefits.



“In busy London, the Royal Parks are a haven for wildlife and there are simple things we can all do to protect it and help it thrive. Litter, and especially plastic, is a growing danger to wildlife worldwide, and we can all help by taking it home or using the bins.”

Sir David Attenborough
in support of The Royal Parks campaign,
Help Nature Thrive

Read on for a selection of case studies on litter and waste management in parks and green spaces across London. These will be made available on our website’s Resources Hub, showcasing a growing number of diverse interventions that are worthy of replication. If you know of other projects that would be suitable for sharing as case studies, please contact us.

Case studies on litter and waste management

a. Clean Parks for London	62
b. London Borough of Haringey	66
c. London Borough of Sutton	70
d. London Borough of Wandsworth	74
e. Alexandra Park and Palace Trust	76
f. Lee Valley Regional Park Authority	80
g. The Royal Parks	84
h. Eco Green Communities	86
i. LAGER Can	88
j. idverde	92

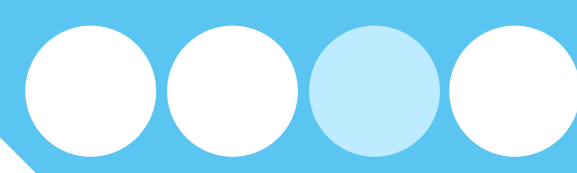
Part three

Read on for more case studies of exceptional projects across London led by boroughs and other land managers.

a.	London Borough of Barking & Dagenham	96
b.	London Borough of Enfield	100
c.	London Borough of Sutton	104
d.	London Borough of Wandsworth	108
e.	City of London	110
f.	idverde	112



Volunteer in Red Cross Garden, Southwark
Credit: Bankside Open Spaces Trust



Speaker 3

Julian Woolley



GL Hearn



Parks for
London



GL Hearn



**CROSS RIVER
PARTNERSHIP**

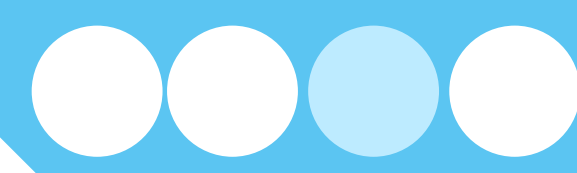
Delivering London's Future Together

SUPPORTED BY

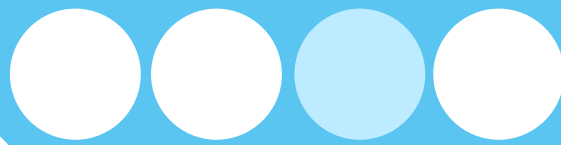
MAYOR OF LONDON



Department
for Environment
Food & Rural Affairs







Parks for
London



GL Hearn



**CROSS RIVER
PARTNERSHIP**

Delivering London's Future Together

SUPPORTED BY

MAYOR OF LONDON



Department
for Environment
Food & Rural Affairs







Speaker 4

Julia Thrift



tcpa



Town & Country Planning Association

*'To challenge, inspire and support people
to create healthy, sustainable and
resilient places that are fair for everyone.'*

www.tcpa.org.uk

www.tcpa.org.uk/areas-of-work/parks-and-green-infrastructure/



SUPPORTED BY
MAYOR OF LONDON





A growing network of 2,000+ people and organisations supporting the creation, enhancement and promotion of green infrastructure in the UK.

Free to join – go to: tcpa.org.uk/join-gip/

Members receive newsletter 10 times a year.

Follow @GIPartnership

Supported by:





tcpa

Rubbish!

London's land owners spending
£16 million a year clearing up rubbish...





tcpa

Rubbish!

London's land owners spending
£16 million a year clearing up rubbish...

...working hard to fix the symptoms, but
unable to fix the causes...





tcpa

A new approach in Scotland

In autumn 2023 Scotland will introduce a deposit scheme to encourage recycling...

News	Opinion	Sport	Culture	Lifestyle	More ▾	
Paid content	About ▾					The Guardian Labs
<p>Growing for good</p> <h3>Plastic bottles, cans and the 20p deposit scheme - how will it get more of us to recycle?</h3> <p>Next summer, Scotland will become the first place in the UK to give consumers a cash incentive to return their empties - so that more have a chance of another life</p>						



Parks for
London



GL Hearn



**CROSS RIVER
PARTNERSHIP**

Delivering London's Future Together

SUPPORTED BY
MAYOR OF LONDON



Department
for Environment
Food & Rural Affairs



tcpa

A new approach in Scotland

In autumn 2023 Scotland will introduce a deposit scheme to encourage recycling...

But industry has lobbied hard against it...

News	Opinion	Sport	Culture	Lifestyle	More ▾	
Paid content	About ▾					The Guardian Labs
<p>Growing for good</p> <h3>Plastic bottles, cans and the 20p deposit scheme - how will it get more of us to recycle?</h3> <p>Next summer, Scotland will become the first place in the UK to give consumers a cash incentive to return their empties - so that more have a chance of another life</p>						

Scotland's bottle and can deposit scheme set to be delayed again

Exclusive: Scottish ministers accused of giving in to lobbying as launch expected to be put back to 2023



Parks for
London



GL Hearn



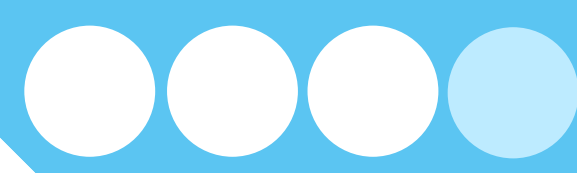
**CROSS RIVER
PARTNERSHIP**

Delivering London's Future Together

SUPPORTED BY
MAYOR OF LONDON



Department
for Environment
Food & Rural Affairs



tcpa

Congratulations!

‘**Good Parks for London 2022**’ illustrates how innovative and hard working parks teams have been when faced with unprecedented levels of litter...

You all deserve our congratulations.

But society can’t afford a system that makes it easy and affordable to produce, transport, distribute and discard tonnes of materials...

We must tackle the causes of litter, not spend £16 million a year picking it up.



**Parks for
London**



GL Hearn



tcpa



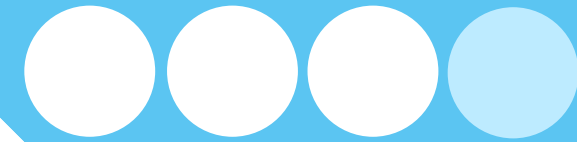
**CROSS RIVER
PARTNERSHIP**

Delivering London’s Future Together

SUPPORTED BY
MAYOR OF LONDON



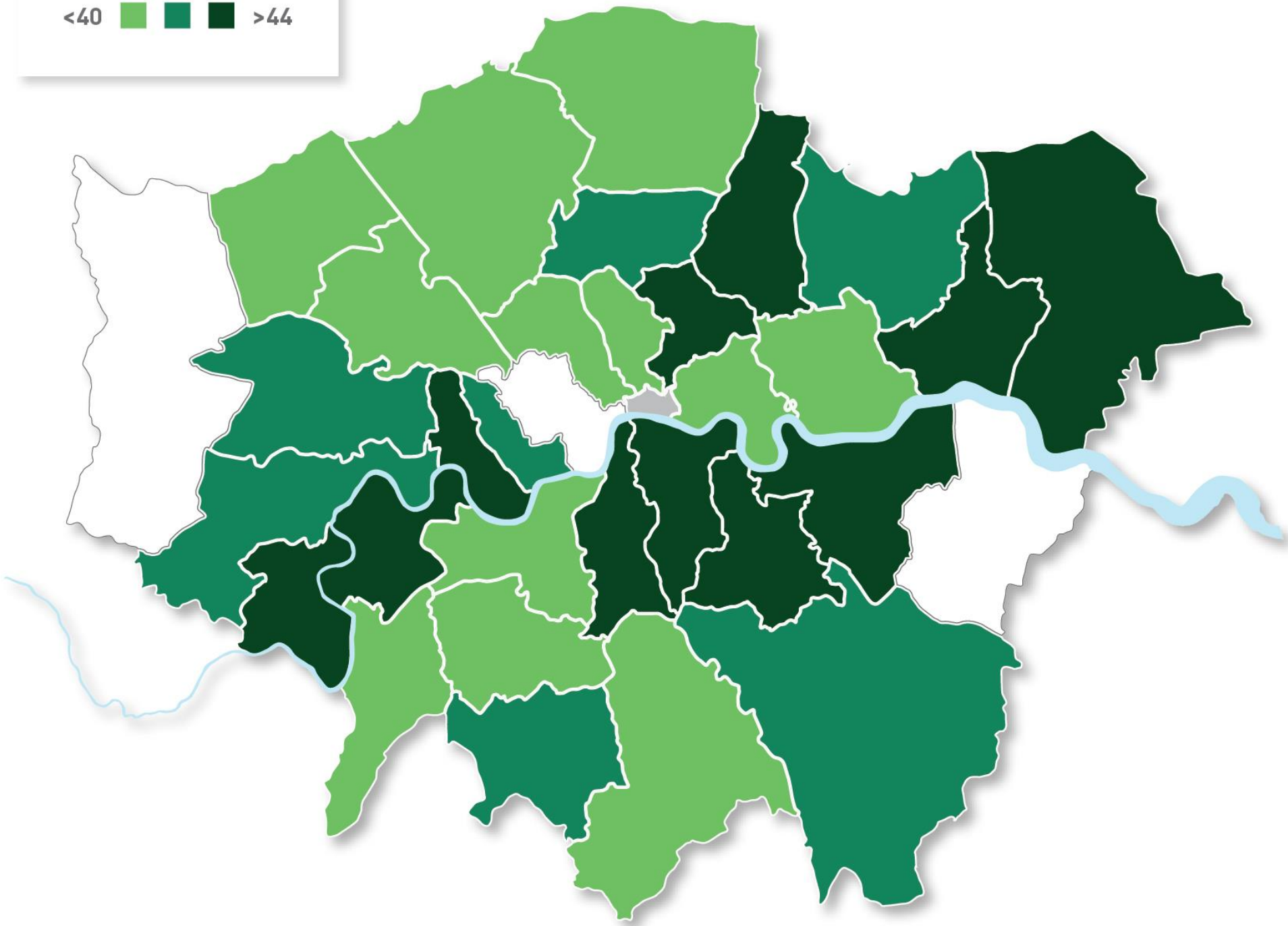
Department
for Environment
Food & Rural Affairs



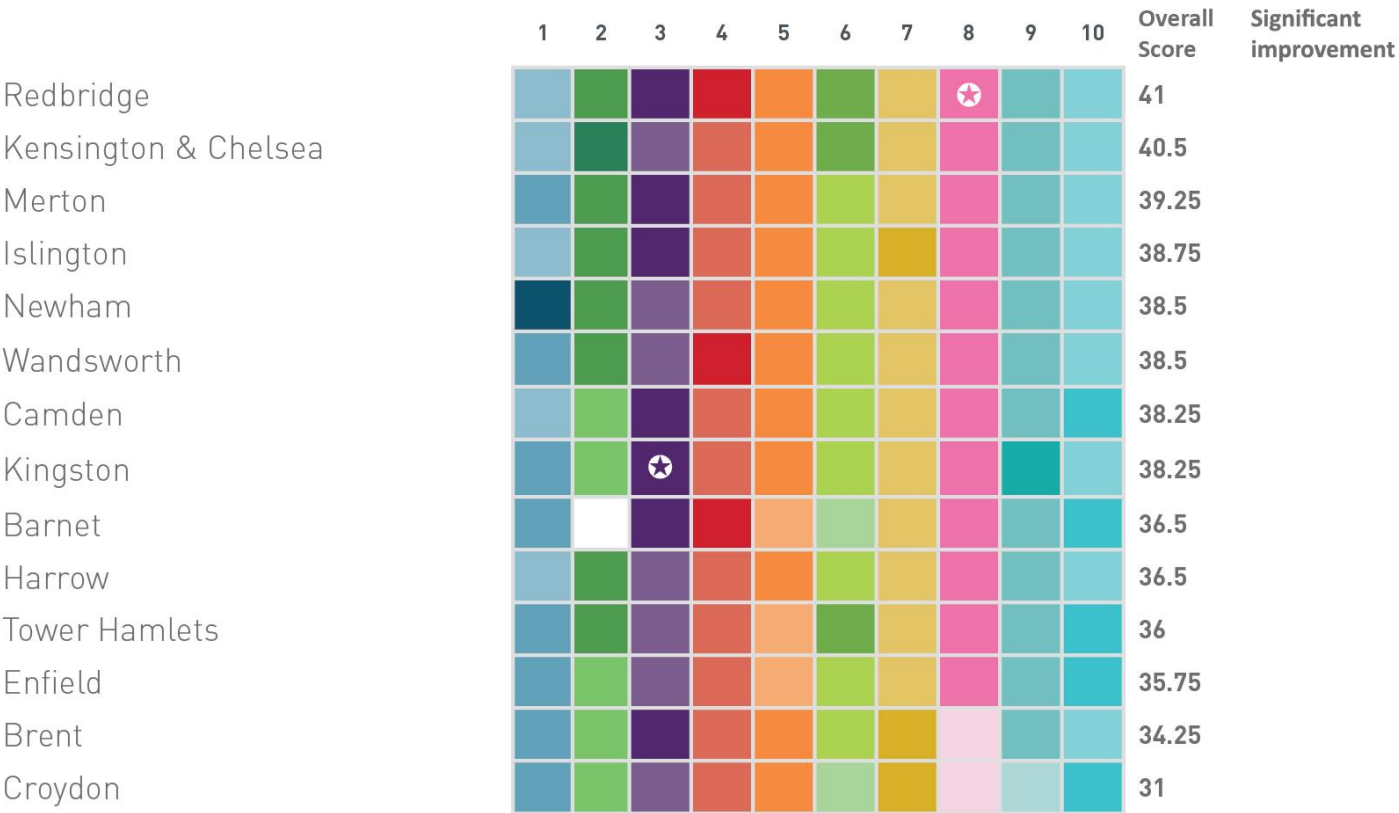
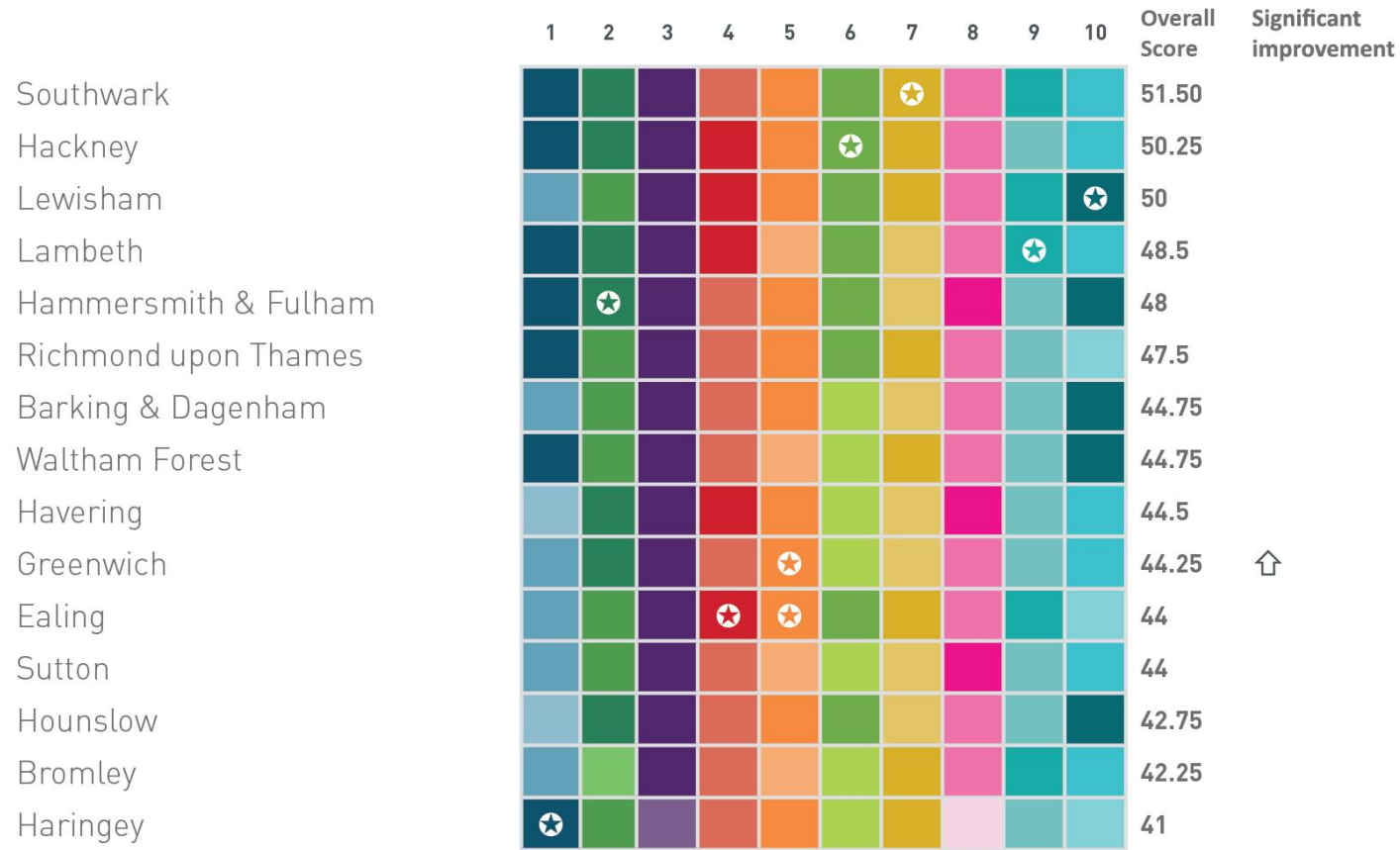
GOOD PARKS FOR
LONDON 2022

Overall scores

<40    >44



Overall scores



Higher scores are represented by darker shading of colour. A blank square indicates that a borough has either not submitted data for a criterion or the data is not available or a score has not been achieved. Featured case studies are marked with a ★, and a ↑ represents a significantly improved score on the prior year.

This year, 29 boroughs participated in the report. The City of London Gardens (CoL) has not been included in these scores as the data does not represent a comparable data set and cannot refer to the wider portfolio of work undertaken by the substantial portfolio of CoL Open Spaces run as charities outside the physical boundary of the Square Mile.





Speaker 5

**Councillor
Catherine Rose**



Peckham Rye Park



Southwark residents and gardeners at Rockingham Allotments

Questions

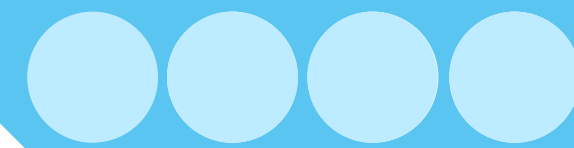


Next Session:

Transport for London, London

Borough of Southwark

Contact Information





www.crossriverpartnership.org



@CrossRiverPartnership



@CrossRiverPship



Cross River Partnership



linkedin.com/company/cross-river-partnership/



www.crossriverpartnership.org/newsletter



Search 'Cross River Partnership' on YouTube