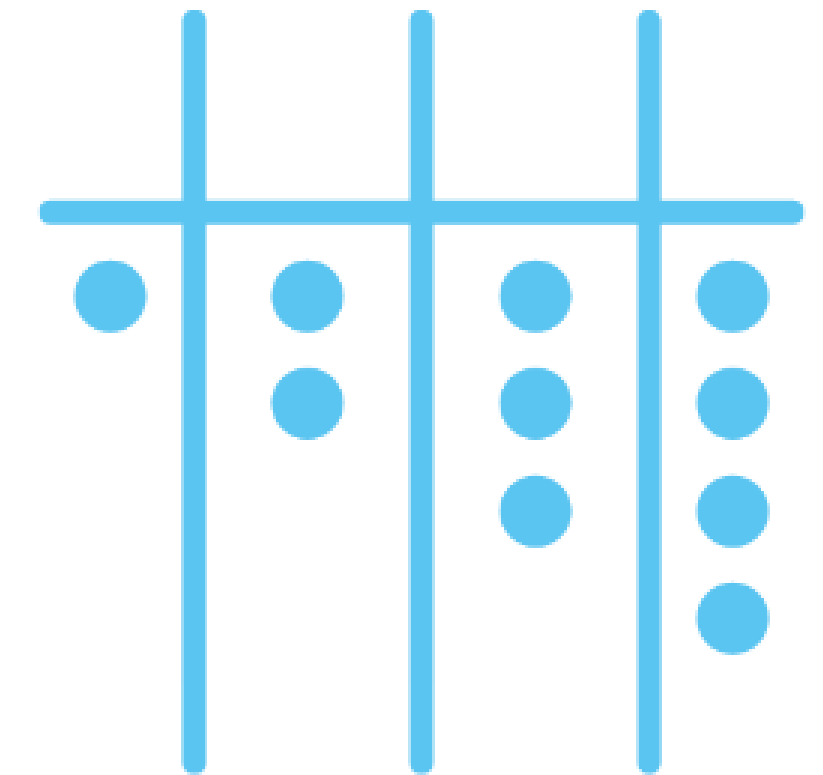


CRP's Connect 4 Series: Session 4

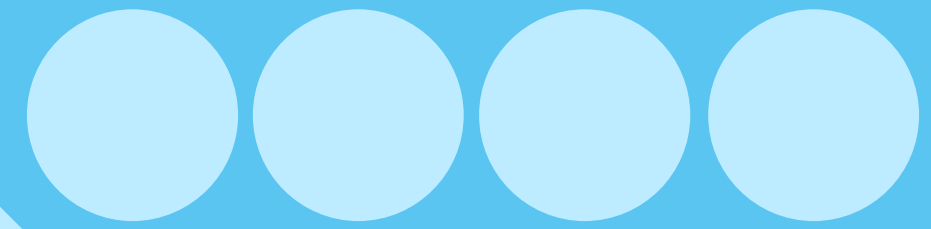
Sustainable Cities: Reinventing the River



CRP's Connect 4 Series



Today's Agenda



Alistair Gale



Ciron Edwards



Dave Ebbrell

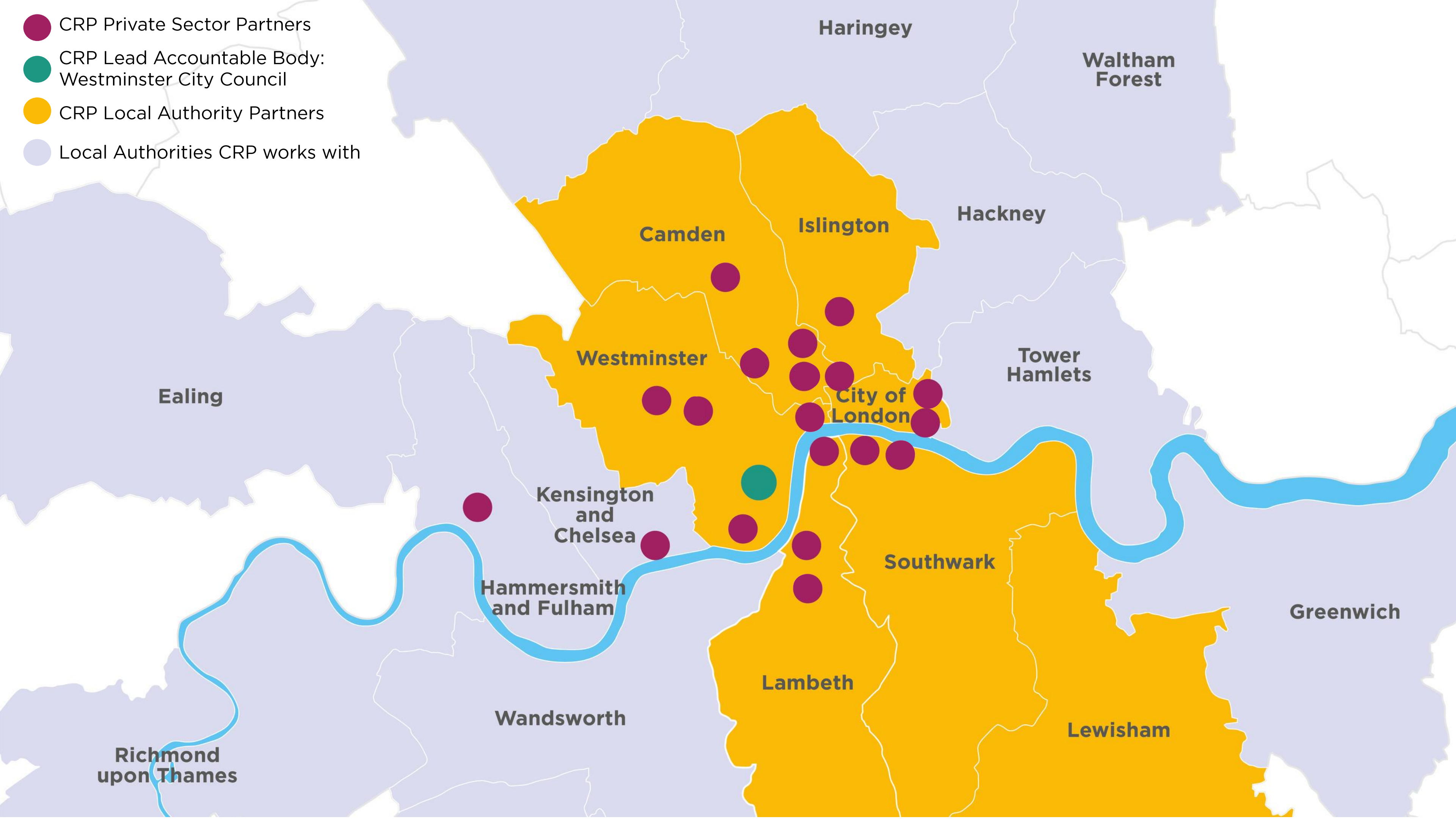


**Discussion and
questions**

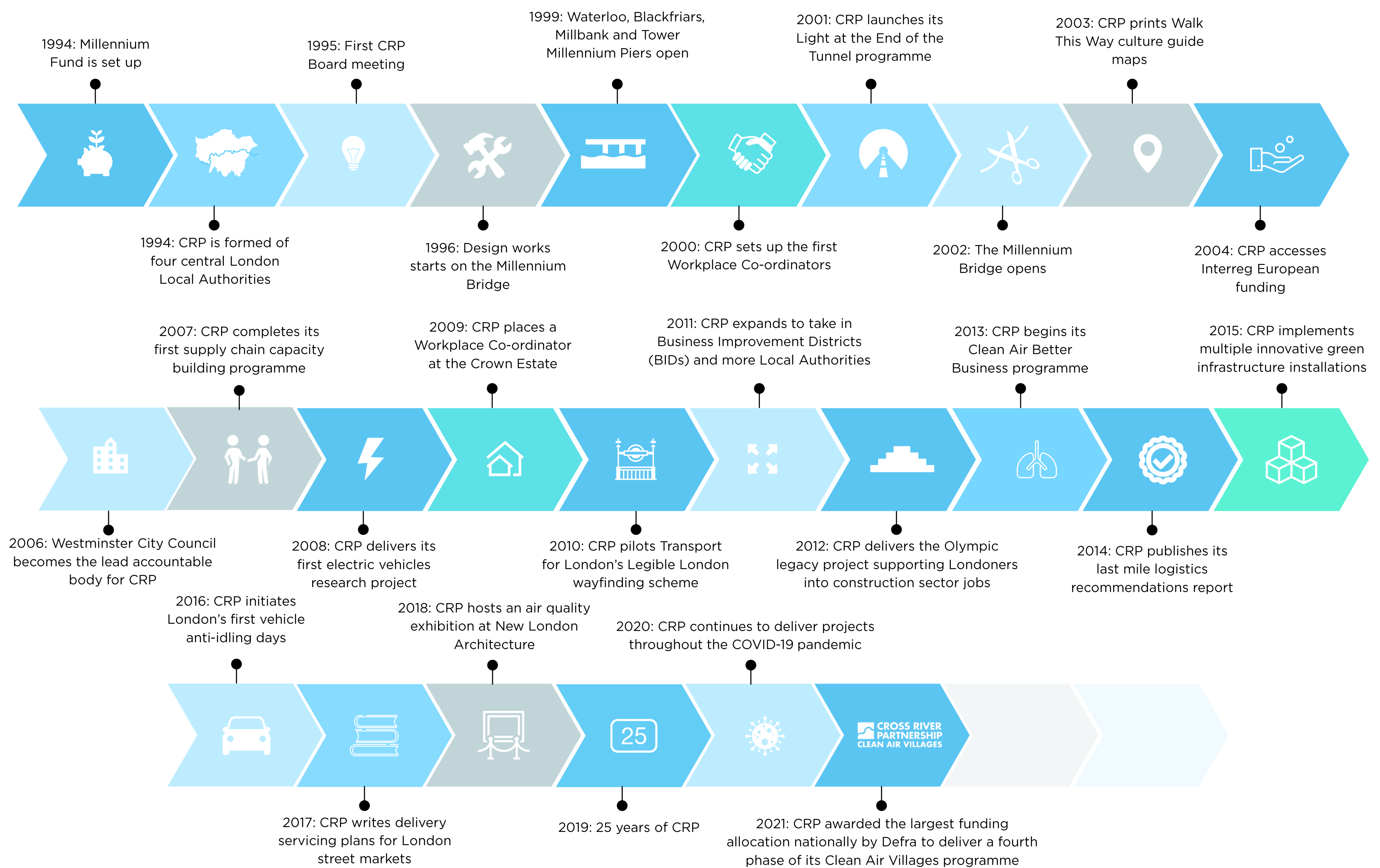
**Please post your
questions and
thoughts throughout
this session in the
chat box**



- CRP Private Sector Partners
- CRP Lead Accountable Body: Westminster City Council
- CRP Local Authority Partners
- Local Authorities CRP works with



CRP Timeline

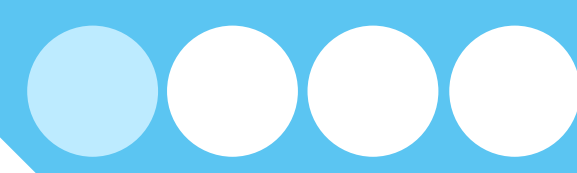


CRP recognises that the need for climate action is more urgent now than ever.

Over the next year, CRP will continue to work with our partners, promoting modal shift for radical emissions reduction.

We will champion cleaner, greener ways of living that make a positive difference to London's environment and the planet.





Speaker 1

Alistair Gale



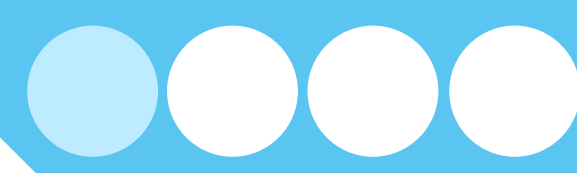
The UK's largest port and busiest waterway



Planning for the future – seeking insight and inspiration

- Port trade forecast to 2050
- Passenger travel assessment
- Sports participation study
- Public opinion study
- Initial public engagement discussion and debate
- Expert panel of advisors
- National, regional, sectoral and local policies





Trading Thames



The No 1, Net Zero UK trading hub

Destination Thames



A place to live, visit, play and enjoy

Natural Thames



Clean air, water and land supporting diverse wildlife

Safety

Net Zero

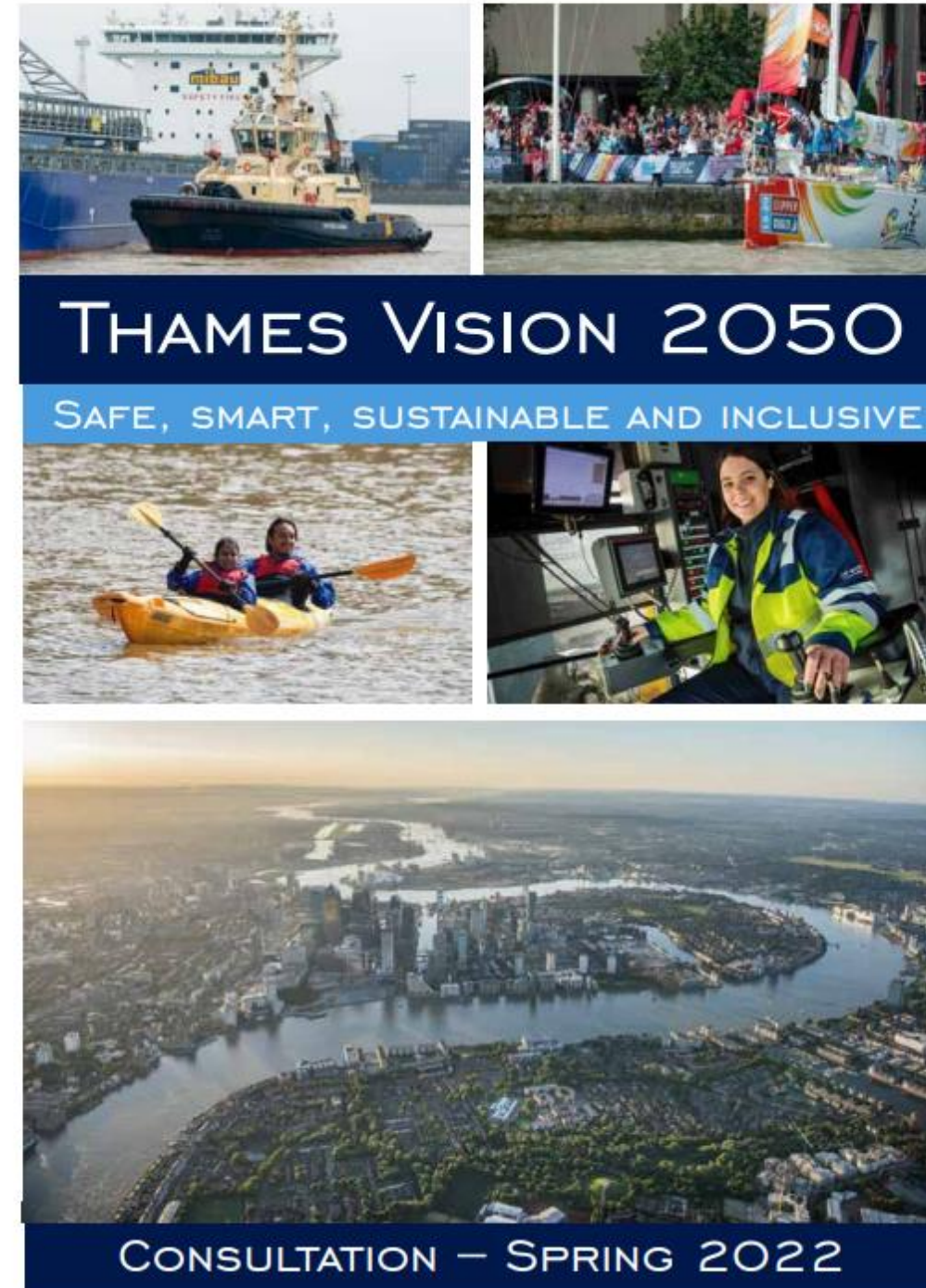
Resilience

Technological change

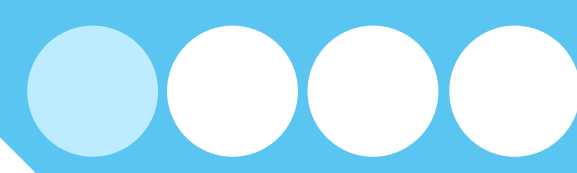
Access and inclusion

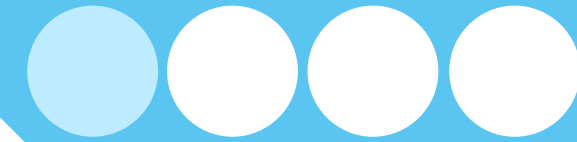
If you want to find out more ...

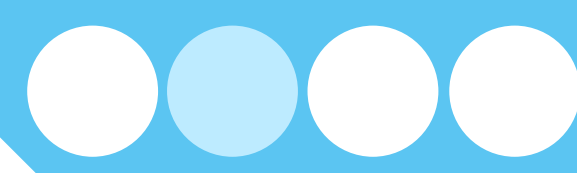
www.pla.co.uk/ThamesVision



Why it matters







Speaker 2

Ciron Edwards

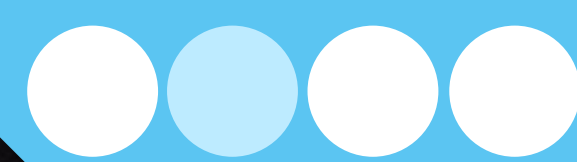
ILLUMINATED
RIVER



ILLUMINATED
RIVER



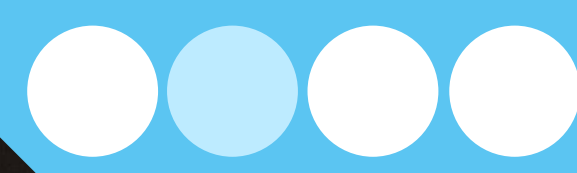
LEO VILLAREAL

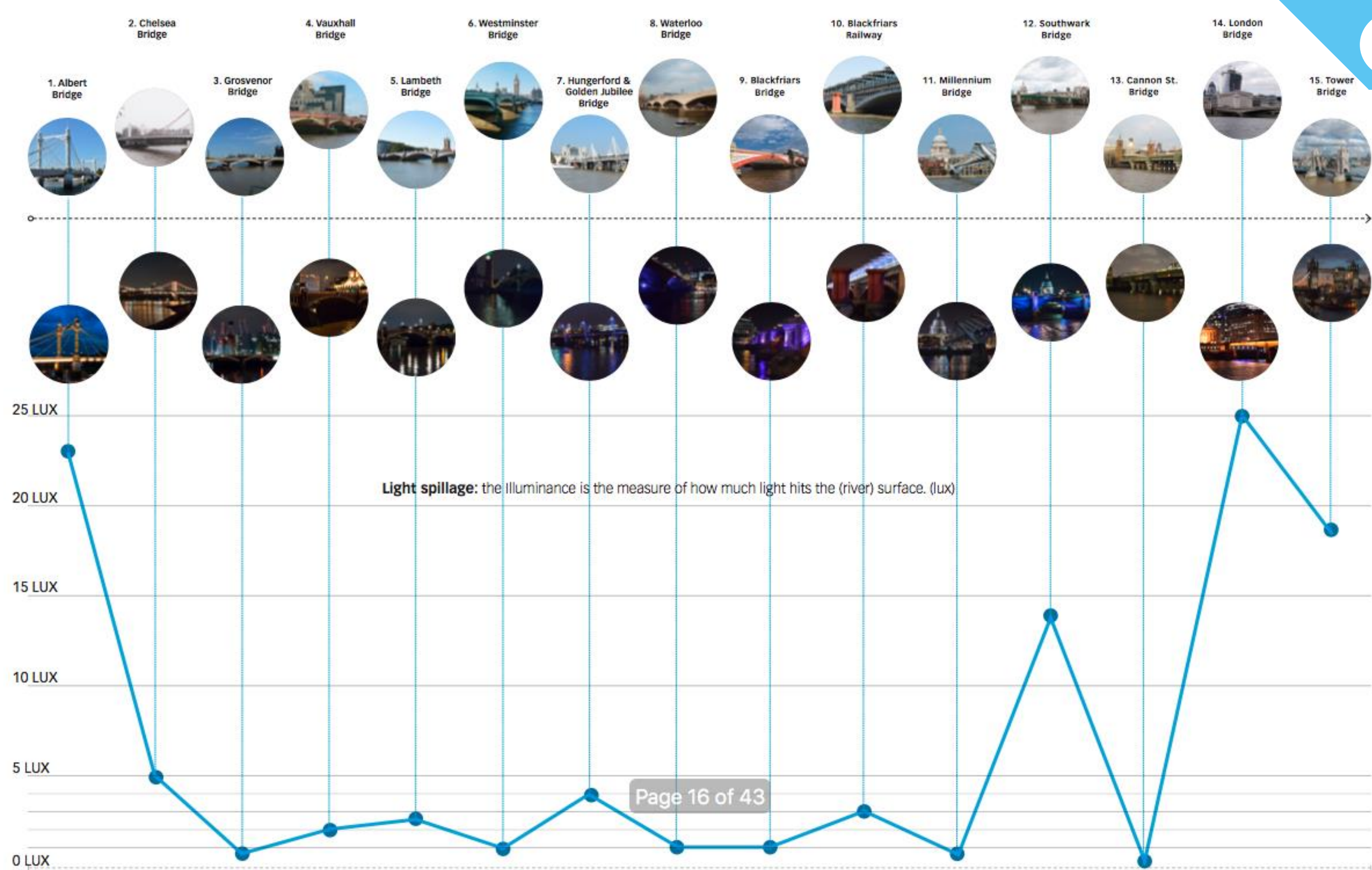






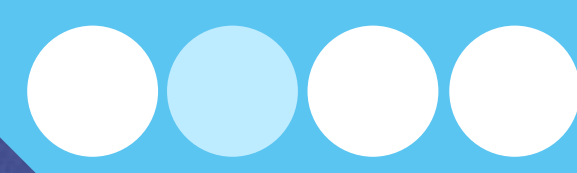
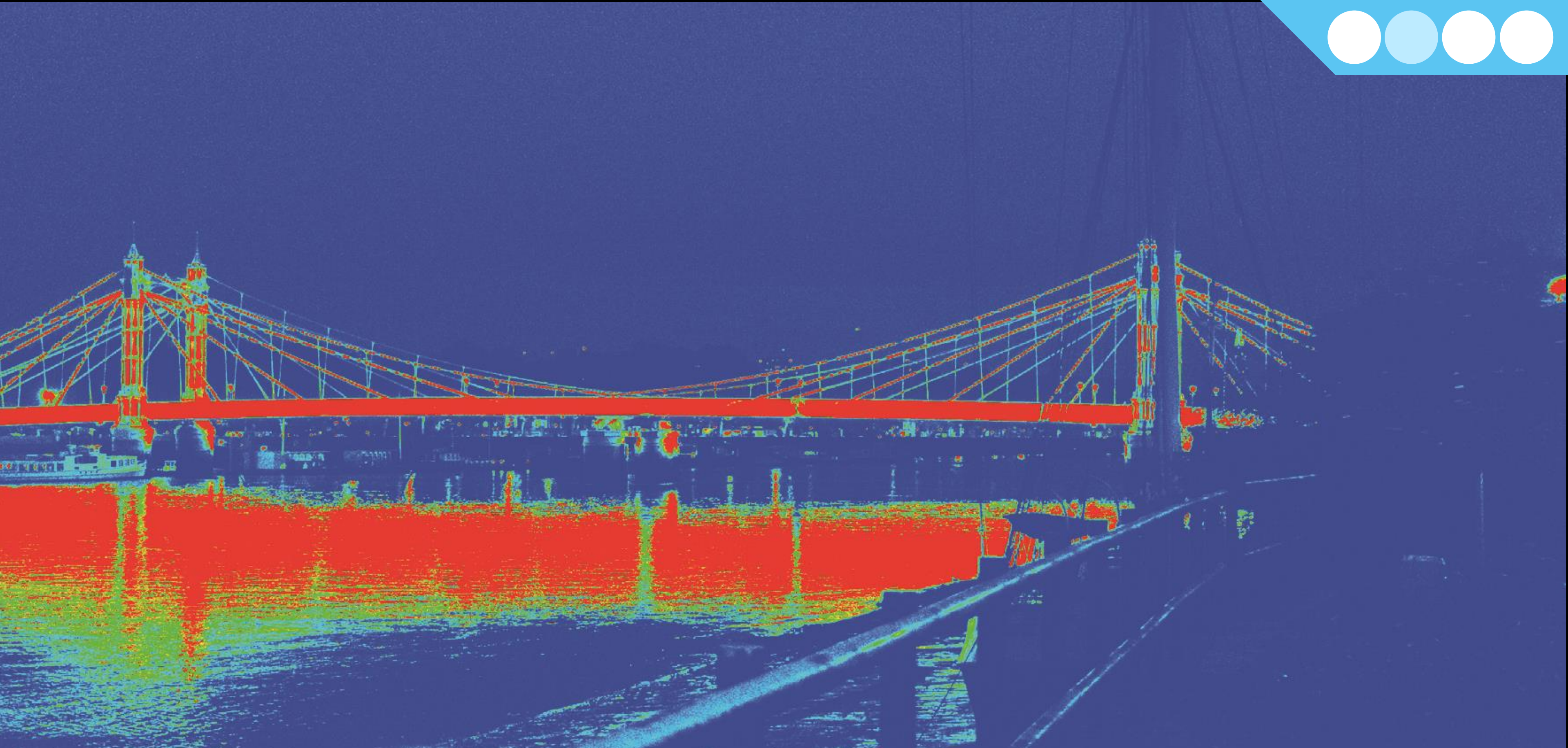


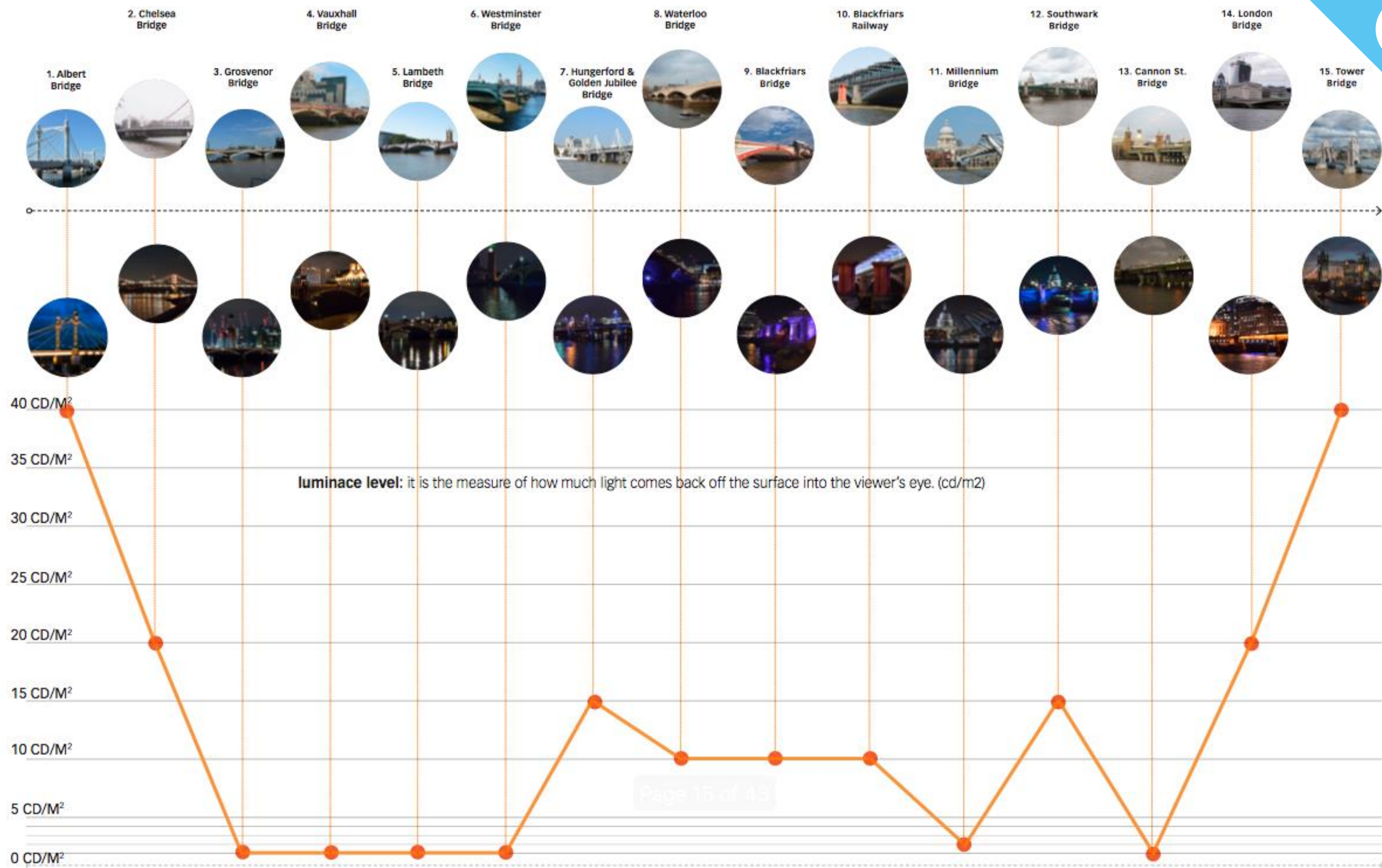


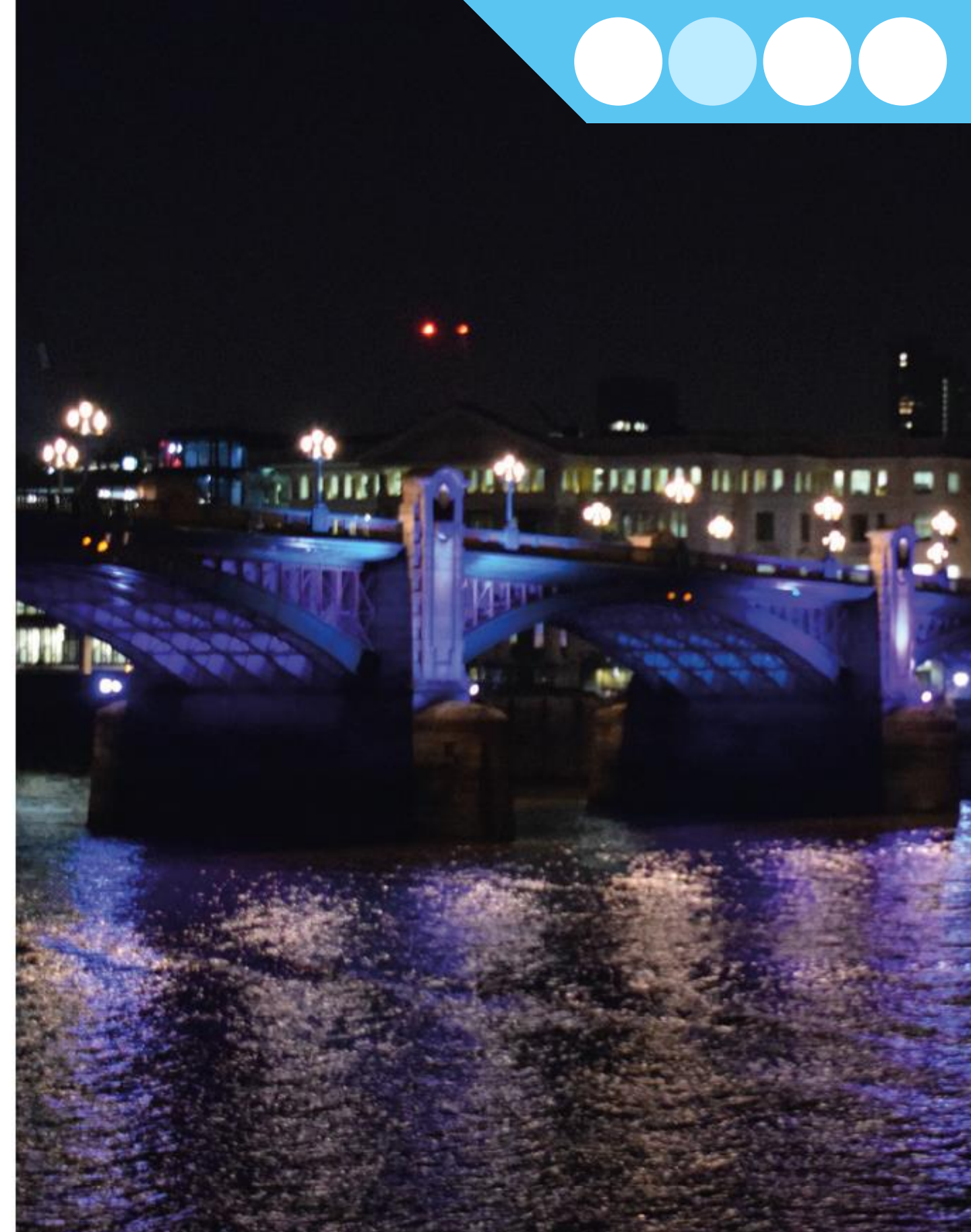


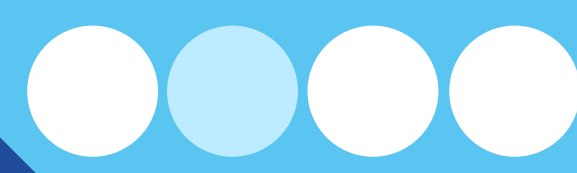
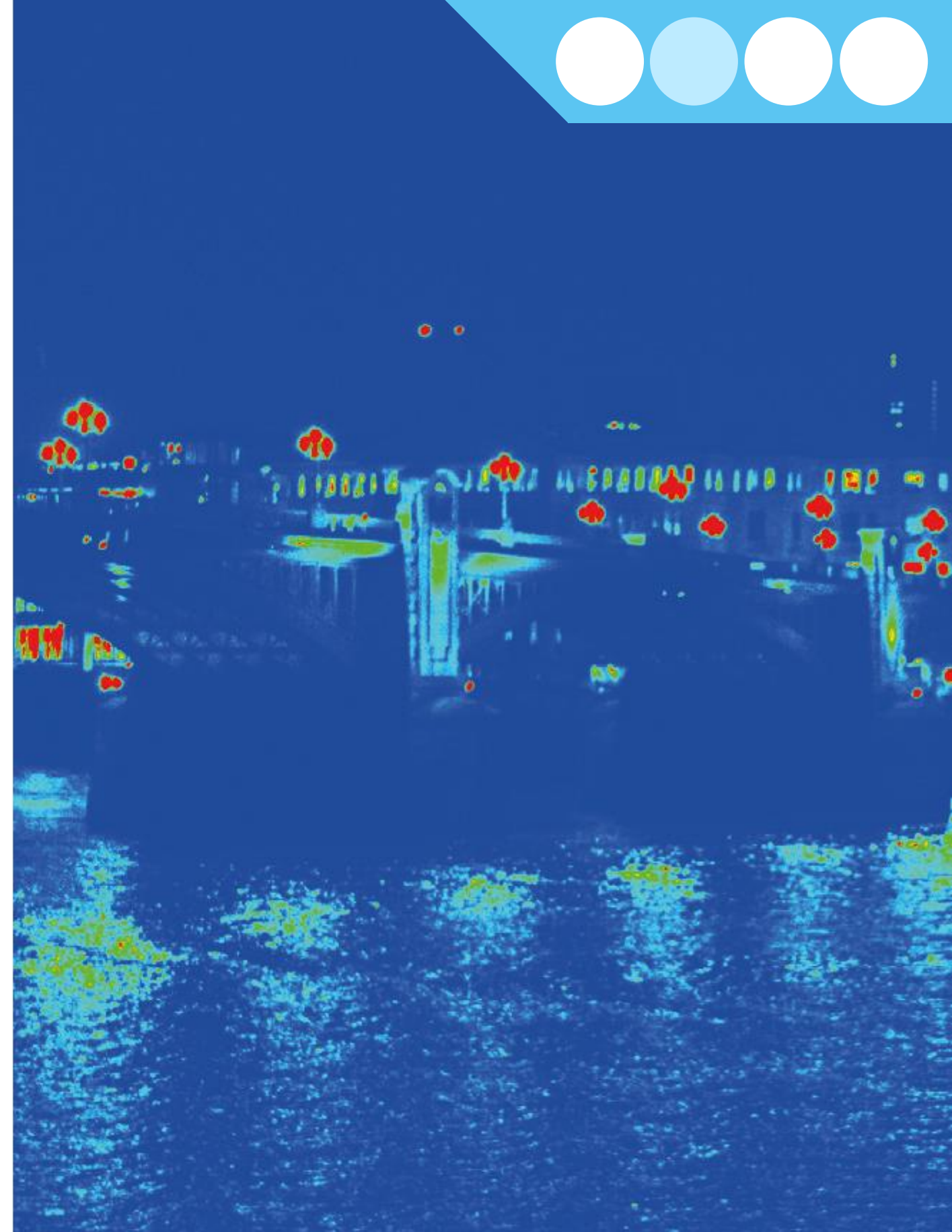
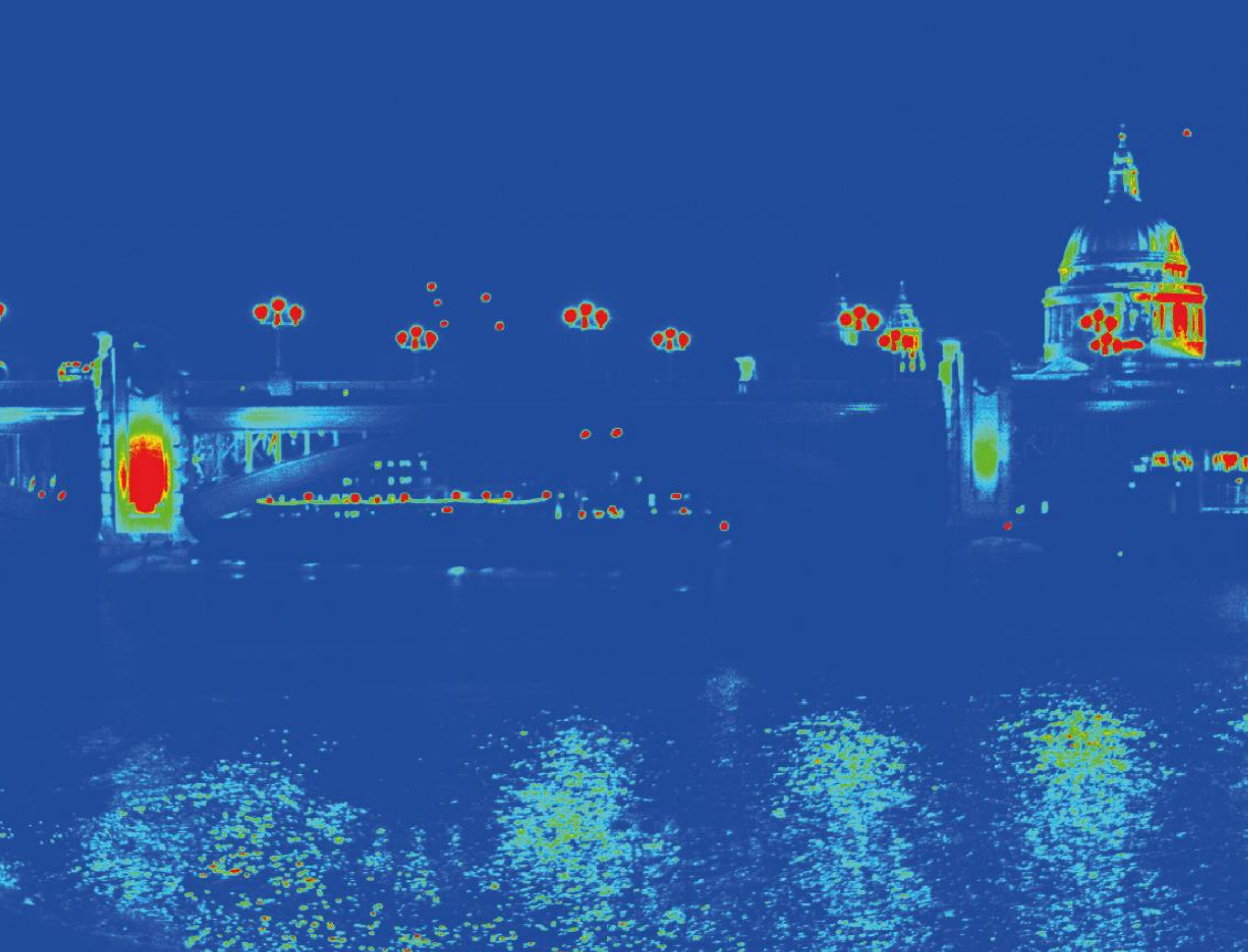










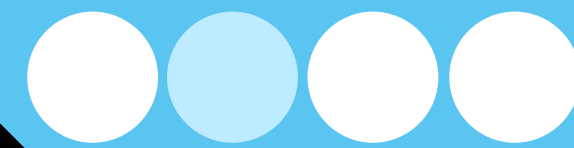




Light + Darkness in the City/ A Lighting Vision for the City of London/ Chapter 4



SPEIRS + MAJOR



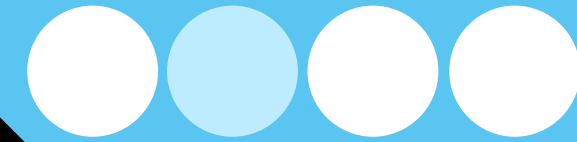
PORT OF
LONDON
AUTHORITY

ILLUMINATED
RIVER

 **CROSS RIVER
PARTNERSHIP**
Delivering London's Future Together

SUPPORTED BY
MAYOR OF LONDON

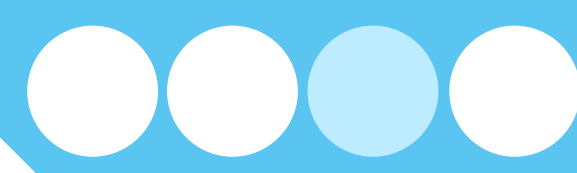

Department
for Environment
Food & Rural Affairs







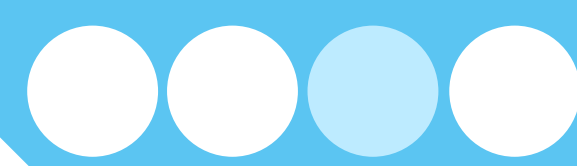
ILLUMINATED
RIVER



Speaker 3

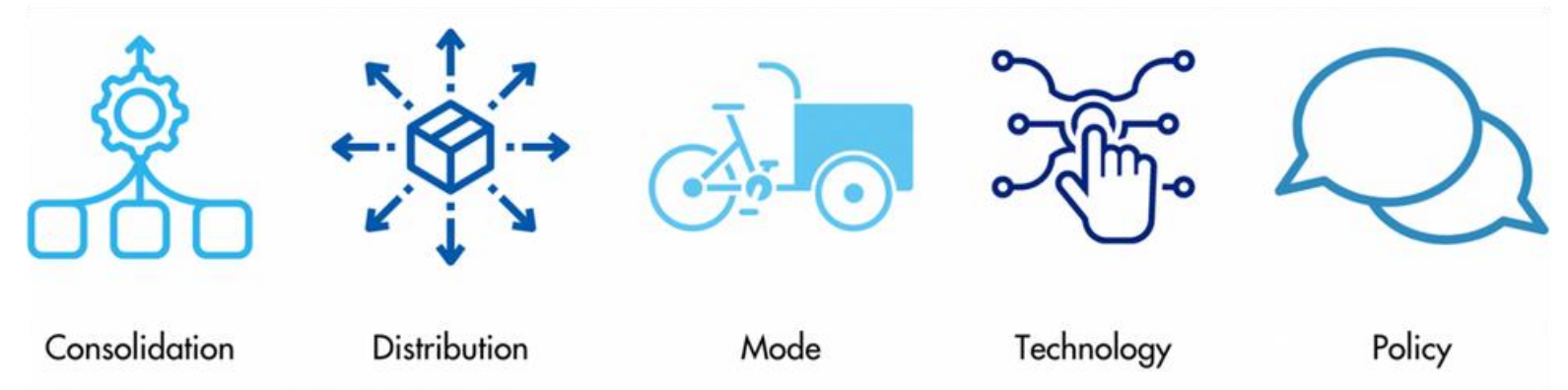
Dave Ebbrell



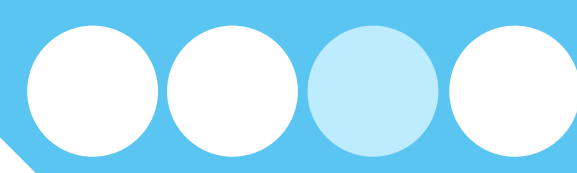


Clean Air Villages 4 (CAV4)

- Defra-funded project led by Westminster City Council, in collaboration with 26 project partners
- Aims to improve air quality across different London 'villages'
- Builds on award-winning CAV1, CAV2 and CAV3 programmes and will lead into Clean Air Logistics London (CALL)
- Freight solutions include Consolidation, Distribution, Mode, Technology and Policy elements



Getting Started with River Freight: A Guide for Businesses



Why do we need river freight?

Q: In 2020, how many parcels were delivered in London?

A: 450 million



Getting Started with River Freight: A Guide for Businesses

Why do we need river freight?

- According to the Centre for London, the number of parcels delivered in London is set to double between 2021-2030. Currently 80% of these are delivered by road.
- Petrol van sales doubled between April 2020 - March 2021
- Coronavirus has pushed this up by around 35 per cent
- With the River Thames, there is an existing route to Central London with access to huge delivery hubs to the east and west of the city.
- Would work alongside other methods of reducing road traffic - consolidation, rail freight etc



Getting Started with River Freight: A Guide for Businesses

New CRP studies



Clean Air Villages 4 Project Butler's Wharf and Dartford Pier

March 2022

 **CROSS RIVER
PARTNERSHIP**
Delivering London's Future Together

 Department
for Environment
Food & Rural Affairs



- Report in partnership with EMSOL
- Measured the emissions including NOx and particulates, as well as noise between September 2021 - January 2022.
- Provides 4 key findings:
 - 1) Emissions comparison against Defra and new WHO standards
 - 2) Pollution caused by river freight activity
 - 3) Site-specific pollution comparison
 - 4) Noise pollution caused by river freight
- Conclusions and recommendations for reducing river freight emissions.

**PORT OF
LONDON**
AUTHORITY

ILLUMINATED
RIVER

 **CROSS RIVER
PARTNERSHIP**
Delivering London's Future Together

SUPPORTED BY
MAYOR OF LONDON

 Department
for Environment
Food & Rural Affairs

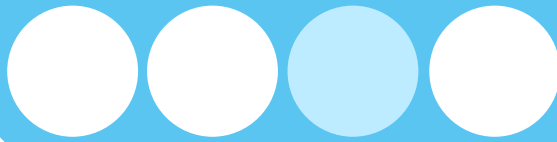
Getting Started with River Freight: A Guide for Businesses

New CRP studies




- Report in partnership with Beckett Rankine, PLA and Thames Estuary Growth Board
- This study considers the design of the existing piers along the River Thames and how they could be modified to accommodate the requirements of a Light Freight service.
- Shortlists 8 piers, including access, costs and environmental considerations as potential locations for a light freight service.
- Examines the possibility of a partial or continuous light freight service.

Getting Started with River Freight: A Guide for Businesses



Opportunities and challenges of river freight




Sustainability



Cost



Reliability



Complexity



Access

Cross River Partnership River Freight Guide



Clean Air Villages 4 Guide - April 2022

Getting Started with River Freight: A Guide for Businesses





Getting Started with River Freight: A Guide for Businesses

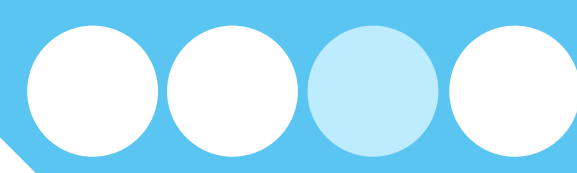


What are the first considerations with river freight?

- Who should I speak to?
 - The first call should be the PLA, who can point you in the right direction
 - Agreements will then need to be made with a boat operator and pier owner
 - How much will it cost?
 - The rate is usually the vessel price, plus fuel and crew for a day but this varies
 - Consolidation and partnering with other businesses will reduce the cost
 - What am I able to take?
 - Light freight is the easiest on the Thames at the moment
 - Needs to be able to be rolled off the boat or carried by hand
 - Pre-sorted
 - For lighter and shorter deliveries could use walking freight/cargo bike.
- Larger may need an electric van



Getting Started with River Freight: A Guide for Businesses

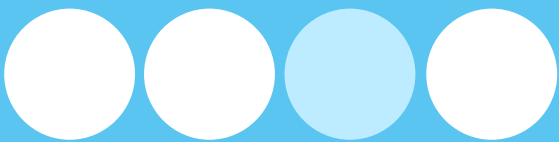


Next steps for interested businesses

- 1) Take a look at the guide and all the other links that have been put in the chat
- 2) Decide what you would move by river and a general idea of where from
- 3) Speak to CRP/ PLA who will be able to point you in the right direction



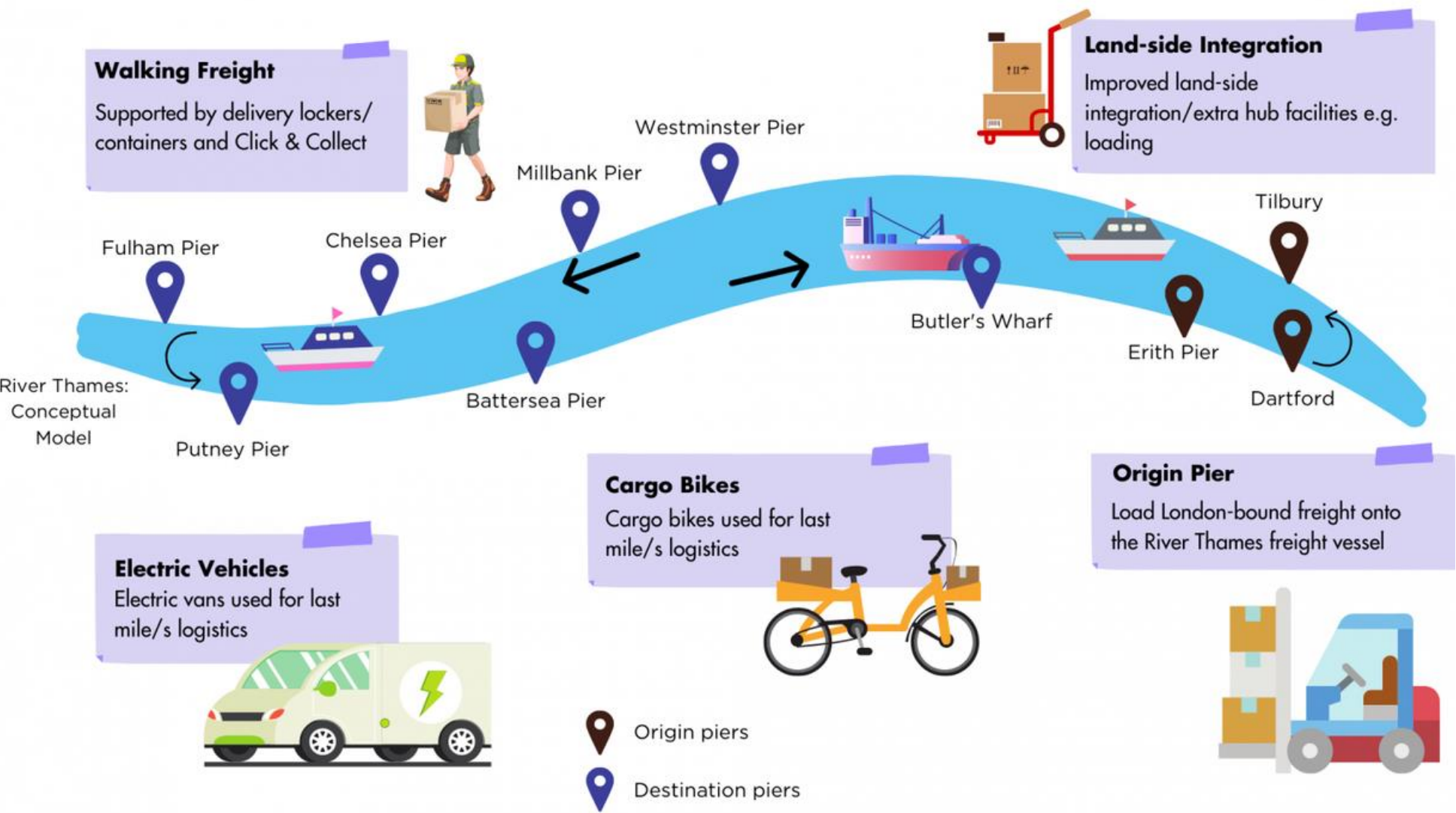
Getting Started with River Freight: A Guide for Businesses



Clean Air Logistics for London (CALL)

Moving more freight into London via river rather than road, supported by a network of highly visible zero emission delivery methods across the central London area, including Electric vehicles, Cargo Bikes, Walking Freight.

Indicative Elements and Routes



The main aims of CALL are to:

- Modify existing river piers for freight
- Provide Logistics micro hub spaces
- Implement Electric Vehicles for ongoing trips away from the River Thames
- Implement Cargo Bikes for ongoing trips
- Implement Walking Freight for ongoing trips
- Adjust the infrastructure linking piers with nearby roads (land-side integration)
- Deliver more river trials (e.g. parcels, bulky goods (non-refrigerated food & drink))

Q&A Session

Contact Information



Alistair Gale
Director of Corporate Affairs, Strategy & Thames Vision
Port of London Authority
alistair.gale@pla.co.uk



Ciron Edwards
The Illuminated River Foundation
cedwards@iceniprojects.com



David Ebbrell
Project Officer
Cross River Partnership
davebbrell@crossriverpartnership.org



Rachael Aldridge
Communications Project Manager
Cross River Partnership
rachaelaldrige@crossriverpartnership.org



www.crossriverpartnership.org



@CrossRiverPartnership



@CrossRiverPship



Cross River Partnership



linkedin.com/company/cross-river-partnership/



www.crossriverpartnership.org/newsletter



Search 'Cross River Partnership' on YouTube



CRP's Connect 4 Series: Session 5

Tackling Air Pollution through Technology

Thursday 26th May

4pm – 4:45pm