

[View this email in your browser](#)

CROSS RIVER PARTNERSHIP

Delivering London's Future Together

Monthly Newsletter
Tuesday 26th April 2022



CRP's Next Online Event

CRP's Connect 4 Series: Session 4

Thursday 28th April
4pm - 4:45pm



CRP's next session in the Connect 4 Series will take place on [Thursday 28th April 2022, 4pm - 4:45pm](#). This interactive session will feature presentations from expert speakers on how the Thames can contribute to a more sustainable London.

[Register for Sustainable Cities: Reinventing the River](#)

Alistair Gale, Director of Corporate Affairs, Strategy & Thames Vision at the [Port of London Authority](#) (PLA) will be presenting on [The Thames Vision 2050](#) and consultation. Also speaking will be Ciron Edwards, [The Illuminated River](#), presenting on the challenge of lighting nine of Central London's great bridges, and helped prompt debate on the use of light in the night-time environment.

Dave Ebbrell, [CRP](#) Project Officer, will be introducing three new CRP river freight studies, including '[Getting Started with River Freight: A Guide for Businesses](#)', a [Clean Air Villages 4](#) toolkit for those who are considering using the tidal Thames for the transportation of cargo, '[River Freight Monitoring: Butler's Wharf and Dartford Pier](#)' and '[Light Freight: Design Solutions for Thames Freight Infrastructure](#)'.

For more information, please contact CRP Communications Project Manager [Rachael Aldridge](#).

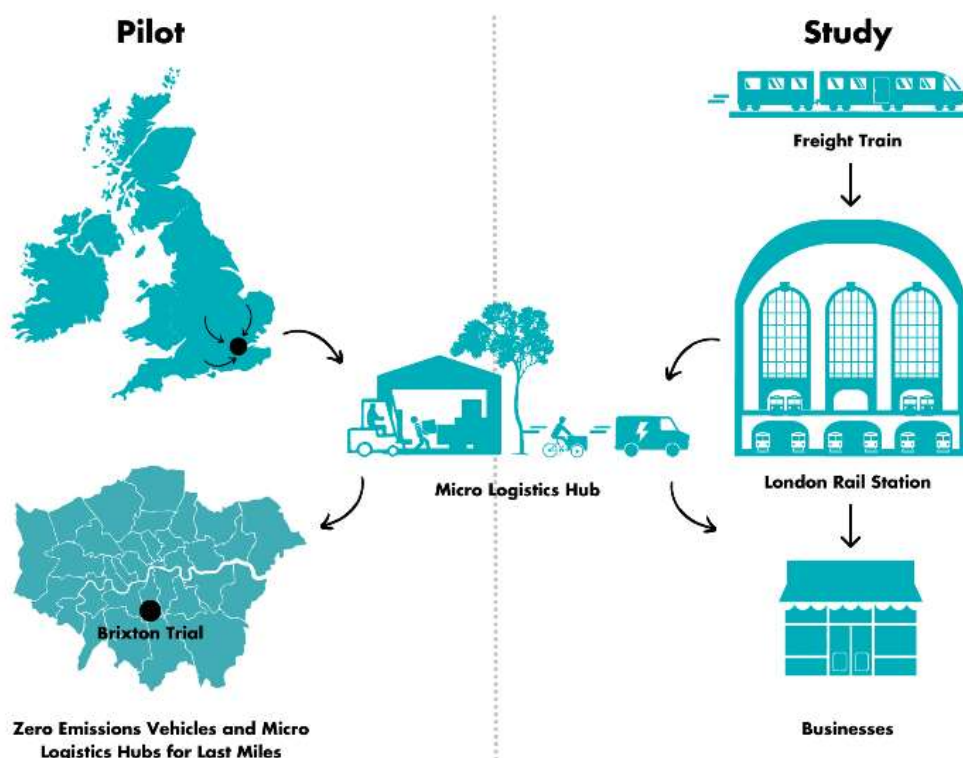
REGISTER NOW



Missed Session 3? Click to watch, with speakers from CRP, Momentum Transport and Jacobs.

Funding Success: Clean Air Freight London

Clean Air Freight (CAF)



Cross River Partnership has been awarded £180,300 of funding by [Urban Health](#), part of the [Guy's and St Thomas' Foundation](#), to minimise the harmful emissions from freight within [London Borough of Lambeth](#) and [London Borough of Southwark](#).

Work is already underway on zero emissions logistics and consolidation of deliveries to Brixton businesses working with partners [Brixton BID](#) and [Pedal Me](#).

CRP is also going to be commissioning a feasibility study into the practical infrastructure arrangements needed to implement increased rail freight into Lambeth and Southwark, including innovative combinations of freight with passengers.

To find out more, please contact CRP Project Manager [Kate Fenton](#).

New CAV4 River Freight Documents

The [Clean Air Villages 4](#) programme has entered its final quarter and the CRP team has been busy delivering air quality improvement initiatives. A [last mile logistics trial](#) has just launched, bringing goods into Brixton by zero emission means. There is also a river freight pilot in the pipeline, aiming to bring goods into central London using the Thames.

CRP is pleased to announce the publication of three new reports:



CRP and the [Port of London Authority \(PLA\)](#) commissioned [Beckett Rankine](#) to investigate the feasibility of handling light freight at London piers. '[Light Freight: Design Solutions for Thames Freight Infrastructure](#)' provides costing and guidelines on pier adaptation that would be required for different pier structures and operational handling approaches to provide robust and agile solutions.



Clean Air Villages 4 Project Butler's Wharf and Dartford Pier

March 2022



'[Monitoring of Butler's Wharf and Dartford Pier](#)'. CRP commissioned [EMSOL](#) to establish how air and noise pollution can be attributed to specific vessels and therefore help to understand the real-world pollution impact of moving freight to inland waterways in London.



Clean Air Villages 4 Guide - April 2022

Getting Started with River Freight: A Guide for Businesses

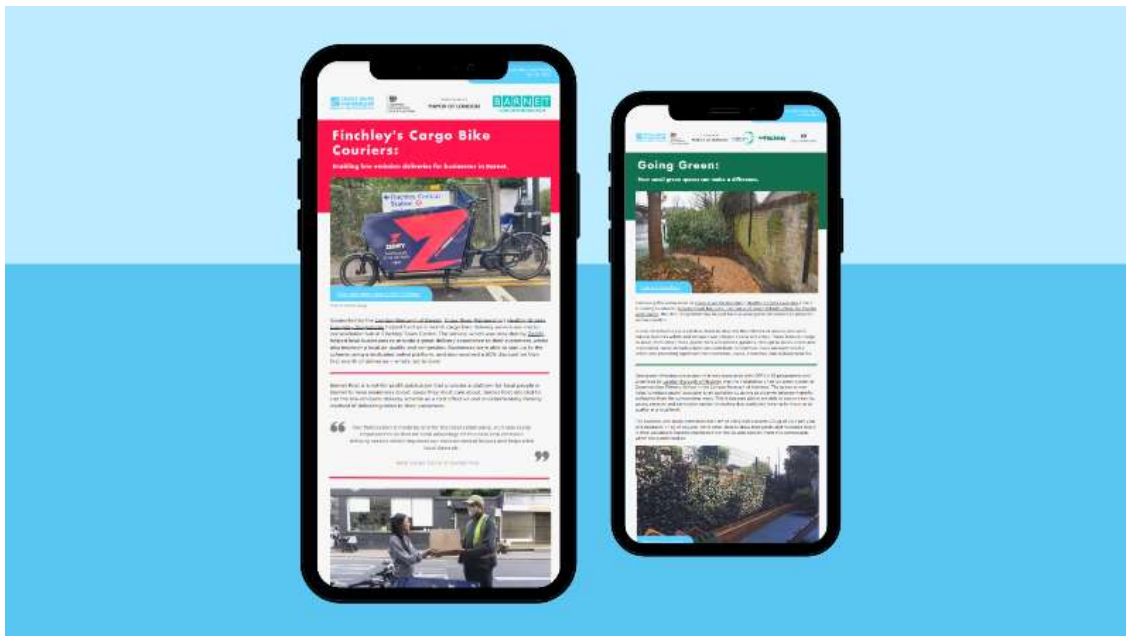
[Read now](#)



'[Getting Started with River Freight: A Guide for Businesses](#)' includes expertise from many groups on the river including information on the opportunities and challenges of river freight, setting up a project and a case study of DHL's ongoing river freight project. For businesses looking to start using the river for cargo, there is a glossary of useful contacts.

[Read all river freight guidance here](#)

Latest Healthy Streets Everyday Case Studies



Read our two new [Healthy Streets Everyday](#) case studies on Finchley's cargo bike delivery scheme and exploring greening in London.

[Finchley's Cargo Bike Couriers: Enabling low emission deliveries for businesses in Barnet.](#)

Supported by the [London Borough of Barnet](#), [Healthy Streets Everyday](#) helped fund an eight-month cargo bike delivery service and micro-consolidation hub in Finchley Town Centre. The service, which was provided by [Zedify](#), helped local businesses to provide a great delivery experience to their customers, whilst also improving local air quality and congestion. Businesses were able to sign up to the scheme using a dedicated online platform, and also received a 50% discount on their first month of deliveries – what's not to love!

Read the case study [here](#).

[Going Green: How small green spaces can make a difference.](#)

Following the publication of CRP's Healthy Streets Everyday (HSE) Greening Guidance, '[Greening out the Grey: The value of Green Infrastructure for People and Places](#)', the HSE Programme has helped fund several green infrastructure projects across London.

The examples listed in this case study include:

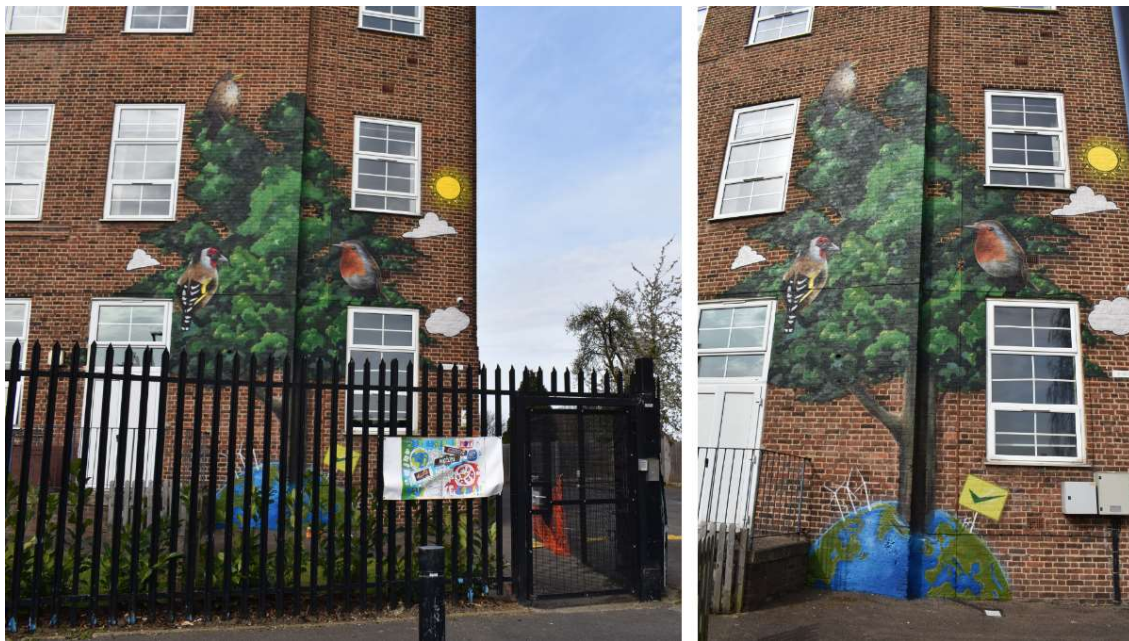
- the installation of an ivy green screen at [Queensbridge Primary School](#) in the [London Borough of Hackney](#).
- the installation of a parklet at [St Clement Danes Primary School](#) in [Westminster City Council](#).

Read the case study [here](#).

For further information, please contact CRP Project Manager [Fiona Coull](#).

[Read all Healthy Streets Everyday case studies here](#)

HSE Murals: Middle Park Primary School



We are happy to announce the completion of the first [Healthy Streets Everyday](#) mural at one of the [Car Free Day 2021](#) mural competition winning schools: [Middle Park Primary School](#) ([Royal Borough of Greenwich](#))!

[Aspire](#) finished painting the mural on 12th April and the results are astonishing! The mural's design is based on the winning drawing created by Ashaè Millwood and Stanley Lorraine, two students from the school.

We would like to thank Aspire, the artist who brought Ashaè and Stanley's concept to life!



CRP partner [City of London Corporation](#) are hosting a new exhibition at [London Metropolitan Archives](#), to show the development of the city in incredible detail, from the late seventeenth century to the present day.

Magnificent Maps of London opened on 11th April. The exhibition includes the first surviving map of the city, Civitas Londinum, which is on display for the first time! This shows how the capital looked in Tudor times, including livestock-grazing fields near the Tower of London.

Other maps highlight the growth of London at a local level, for example parishes and localities, whereas others demonstrate the use of maps for presenting information which records the experience of previous generations of Londoners.

[Click here for more information and to see the exhibition for yourself](#)

Millennium Bridge Celebrates 20 Years



One of CRP's most iconic projects, the [Millennium Bridge](#), celebrates its 20th anniversary this year. Along with CRP, other project partners were the [City of London](#), [Southwark Council](#), the [Millennium Commission](#) and [Bridge House Trust](#).

The bridge was built to encourage more activity on the embankment near [St Paul's Cathedral](#) and to bring visitors further south straight to the doors of one of Europe's largest art galleries, the [Tate Modern](#), and to other tourist attractions south of the river.

The design concept of the bridge was to create 'a ribbon of steel' across the river to maintain spectacular views from St Paul's Cathedral and the Tate Modern. The bridge design was chosen through an international open competition held in 1996 by Southwark Council, the [Financial Times](#), and the [Royal Institute of British Architects](#). The competition was won by [Foster & Partners](#) and [Sir Anthony Caro](#) with [ARUP](#) as the engineering team.

The project was partially funded through the [Single Regeneration Budget \(SRB\)](#) programme administered by the London Development Agency. Other funders included the project partners mentioned above.

Project partners and the bridge's architectural designers and engineers will mark the occasion at an event to be held in May.

National Walking Month



May is the [Living Streets National Walking Month](#). The challenge is to #try20 – walk for 20 minutes each day during May. This nationwide incentive has many benefits for both you and the city. By walking instead of using a car you can help improve your local air quality. But walking is not just about your environment, walking even for a short time improves your overall health and can reduce the risk of a number of preventable health conditions such as heart disease, certain cancers and Type 2 diabetes. It can also improve your mood, increase your vitamin D levels and help you engage with your local area and community.



CRP's Away Day

(Almost!) all of the CRP Team met in sunny Regent's Park last Thursday to discuss all things CRP-related. This included a session on 'Presenting with Power', developing our [Monitoring and Data Analysis Services](#), and improving the newsletter ... so keep an



EV Fleet-Centred Local Energy System – Project Update

The [EV Fleet-Centred Local Energy System \(EFLES\)](#) pilot is a collaboration between [UPS](#), [UK Power Network Services](#), [Moixa](#) and [CRP](#), supported by [Innovate UK](#), to use artificial intelligence to optimise existing infrastructure. It's successful completion means fleet operators will have a platform that enables them to get the most out of their energy use at their depots while minimising costs.

eye out for the revamped version next month!



Let's Walk London: New Campaign Maps

[Footways London](#) have mapped quiet and interesting walking routes, getting more Londoners to make sustainable travel choices.

A network of enjoyable walking routes linking London's stations with some of the city's best destinations is being charted in a new Central London Footways map. The paper map will be distributed free to Londoners, with 10K copies made available at Network Rail's 11 mainline stations from 23th May or a digital copy which can be accessed via the [Footways London](#) website.

The project, published by Footways and designed by [Applied Information](#), maps hundreds of kilometres of safe and pedestrian-friendly walking routes in London that are low on vehicle traffic and pollution, making it easier for Londoners to find clean air routes to reduce their exposure to toxic air.

The back of the map includes a 'Quick Connections' tool to show how easy it is to walk from A-to-B. The map also lists hidden features, new destinations, and interesting attractions to discover, making journeys even more enjoyable.

Everyone is invited to get involved in Let's Walk London. Visit the [Footways London website](#) to find your route or follow @FootwaysLondon on Twitter and Instagram.

This is particularly significant given the transition towards EVs and rising energy costs. The project is in its final stages and should end in the latter part of this year.

For more information, watch this short video



Mental Health Awareness Week

[Mental Health Awareness Week](#) is run by the [Mental Health Foundation](#) to enable the UK to focus on achieving good mental health. The Mental Health Foundation started the event 21 years ago, and each year a theme is chosen – and this year's theme is loneliness. This year, it takes place from 9th - 16th May.

Loneliness is affecting more and more of us in the UK and has had a huge impact during the pandemic. There is a clear importance for connecting with other people and improving and protecting our mental health from forging these connections to reduce loneliness.

CRP has just hosted an away day, where we planned and strategized in each other's company. CRP's projects also aim to improve mental health and reduce loneliness by focussing on communities, greening, air quality and active travel, to support London and the UK's population to feel improved mental health and reduced loneliness.

Dates for your Diary



28th April. [On Your Feet Britain](#).

28th April. 4pm – 4:45pm. [CRP's Connect 4 Series - Session 4. Sustainable Cities: Reinventing the River](#).

1st - 31st May. [National Walking Month](#). Living Streets.

1st - 31st May. [National Bike Month](#). Love to Ride.

5th May. [Local Elections](#). UK-wide.

9th May. Wimbledon Cargo Bike Scheme Launch. Wimbledon Piazza, SW19.

9th - 16th May. [Mental Health Awareness Week](#). Mental Health Foundation.

13th May - 14th May. 10am - 17pm. [International Conference on Climate Change and Sustainability Engineering 2022](#). Online.

20th May. [Bike to Work Day](#). Love to Ride.

22nd May. [International Day of Biological Diversity](#). CBD.

26th May. 4pm – 4:45pm. CRP's Connect 4 Series - Session 5. Tackling Air Pollution through Technology.

16th June. 8am - 9.30am. [The Big Fuel Up – A Cargo Bike Networking Event](#). Bubbling Well Square, SW18. Wandsworth Council.

Cross River Partnership is an alliance of Angel London, Better Bankside BID, Brixton BID, Cadogan, Camden Town Unlimited BID, Central District Alliance, Cheapside Business Alliance, City of London Corporation, Eastern City Partnership, Euston Town BID, Greater London Authority, Groundwork London, Hammersmith BID, Hatton Garden BID, London and Partners, London Borough of Camden, London Borough of Hammersmith and Fulham, London Borough of Islington, London Borough of Lambeth, London Borough of Lewisham, London Borough of Southwark, Network Rail, Port of London Authority, Royal Borough of Kensington and Chelsea, South Bank BID, Team London Bridge BID, The Fitzrovia Partnership BID, The Northbank BID, Transport for London, Vauxhall One BID, Victoria BID, Westminster City Council.

Copyright © 2022, Cross River Partnership, All rights reserved.

If you have been forwarded this e-bulletin and would like to register, please click [here](#).

[Unsubscribe from this list](#) [Update subscription preferences](#)
Copyright © 2022 Cross River Partnership, All rights reserved.

Want to change how you receive these emails?
You can [update your preferences](#) or [unsubscribe from this list](#).