



Good Parks for London 2021: Parks and Climate Change

Thursday 18th November
1:15pm – 2pm



SUPPORTED BY
MAYOR OF LONDON



Today's Panel



Tony Leach
Chief Executive
Parks for London

Speaker



Joanne Dennis-Jones
National Head of Planning
GL Hearn

Speaker



Judy Ling Wong CBE
Honorary President
Black Environment Network

Speaker



Councillor Samia Chaudhary
London Borough of Hounslow

Speaker



Rachael Aldridge
Communications Project Manager
Cross River Partnership

Chair



Dave Ebbrell
Project Officer
Cross River Partnership

Chat Moderator

Today's Agenda

1. Cross River Partnership
2. Report Sponsor: GL Hearn
3. Keynote Speaker: Judy Ling Wong
4. Parks for London
5. One of the Most Improved Boroughs
6. Questions



Please pose your questions and thoughts throughout this session in the chat box to the right



Introduction and Context

Rachael Aldridge

Cross River Partnership



**CROSS RIVER
PARTNERSHIP**

Delivering London's Future Together

03 Partners

Cross River Partnership is proud to be working collaboratively with all of these public, private and community partners across central London and beyond.

- 1 Angel London
- 2 Better Bankside
- 3 Brixton BID
- 4 Cadogan
- 5 Camden Town Unlimited
- 6 Cheapside Business Alliance
- 7 Eastern City Partnership
- 8 Euston Town BID
- 9 Hammersmith BID
- 10 Hatton Garden BID
- 11 Marble Arch BID
- 12 Central District Alliance

- 13 Paddington Now
- 14 South Bank BID
- 15 Team London Bridge
- 16 The Fitzrovia Partnership
- 17 The Northbank BID
- 18 Vauxhall One
- 19 Victoria BID
-  **CRP Board Boroughs**
-  **Boroughs CRP works with**
-  **CRP Lead Accountable Body:**
Westminster City Council

CRP Strategic Partners:

- Greater London Authority
- Groundwork London
- London and Partners
- Network Rail
- Port of London Authority
- Transport for London





Clean Air Villages 4



Clean Air Villages 3



Healthy Streets Everyday



Clean Air Thames



Central London Sub-Regional Transport Partnership



Town Centre Futures



EV Fleet-Centred Local Energy System (EFLES)



Lighting London Sustainably



Parks for
London



GL Hearn
Part of Capita plc

BEN



**CROSS RIVER
PARTNERSHIP**
Delivering London's Future Together

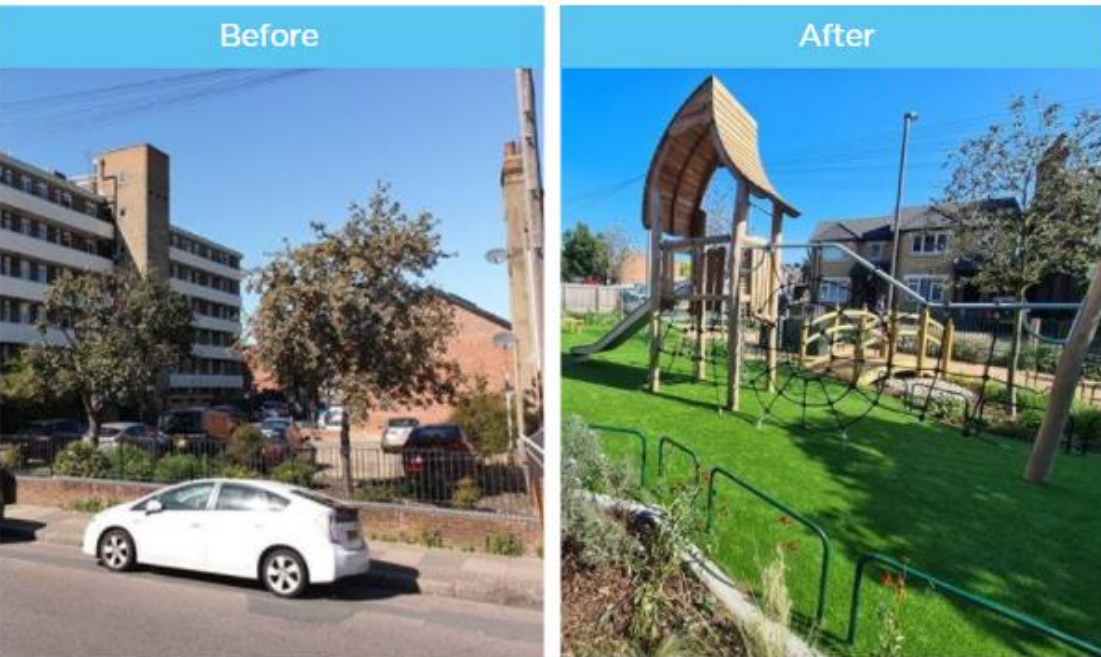
SUPPORTED BY

MAYOR OF LONDON



Department
for Environment
Food & Rural Affairs

New Healthy Streets Everyday Case Study: Mellison Road Pocket Park



“

This is a really welcome environmental initiative that has seen the removal of tarmac and its replacement with trees and shrubs. It is now the perfect spot for a new, welcoming and greener community space. It has the potential to be a wonderful little green oasis, providing local people with a place to relax and unwind and hold community events, while installing play equipment here is great news for young people and their parents and provides a real focal point for families in the area.

”

Councillor John Locker, Cabinet Member for Strategic Planning and Transportation

Joanne Dennis-Jones
National Head of Planning
GL Hearn



Judy Ling Wong CBE

Honorary President

Black Environment Network





Parks, People and Climate Action

Judy Ling Wong CBE



Parks for
London



GL Hearn
Part of Capita plc

BEN

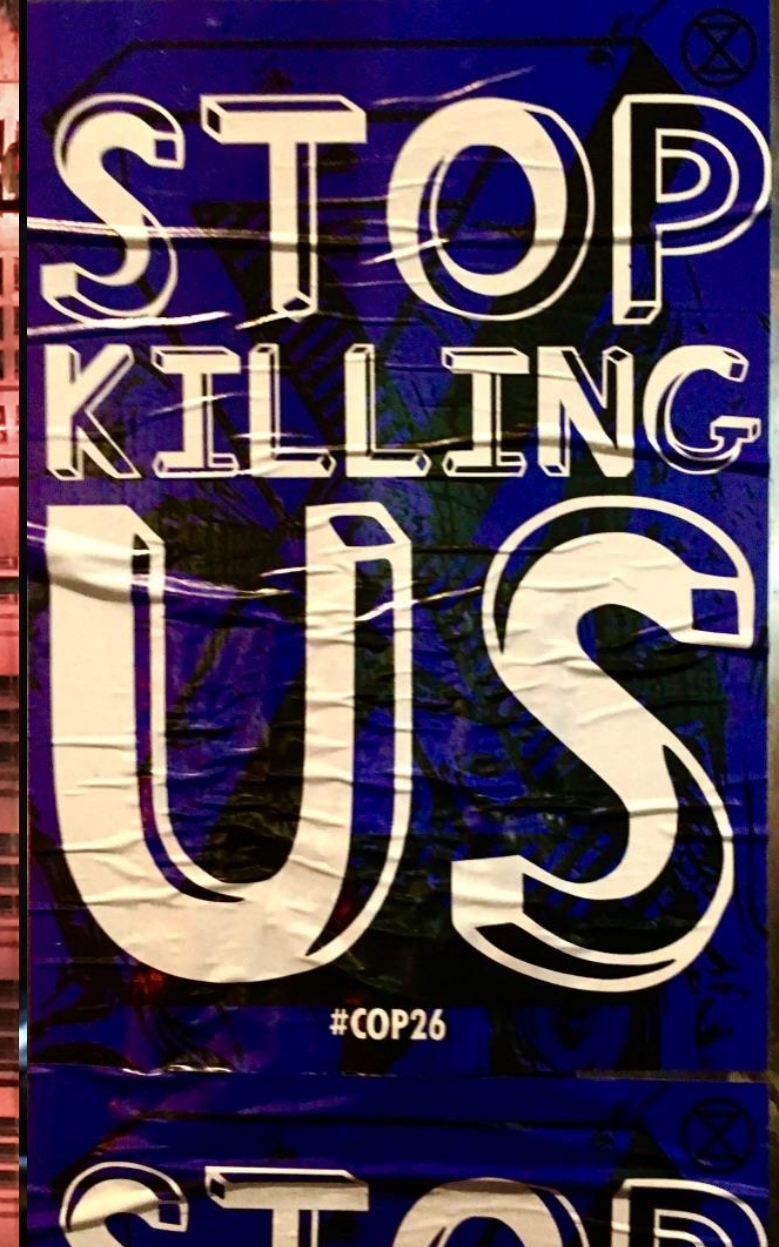


CROSS RIVER
PARTNERSHIP
Delivering London's Future Together

SUPPORTED BY
MAYOR OF LONDON



Department
for Environment
Food & Rural Affairs









The Challenge Beyond COP 26 from Greta and the Young Generation

How quickly can we move beyond the Land of Blah Blah Blah?

Parks and Climate Action



1. **Parks as physical spaces** ameliorating the impact of climate change, contributing to biodiversity, enabling access to nature as the basis for environmental participation, and improving health and wellbeing as the foundation for resilience and adaptation
2. **Parks as hubs** for informal education, inspiring and stimulating local communities to take climate action in the park, the neighbourhood and within their own lives, and campaigning for climate action at other levels



Habitat III *UN Deputy Secretary-General Amina J. Mohammed (2017)*

Today, the majority of people, an estimated 4 billion, live in urban areas. By 2050, it could be 6 billion..... It is clear that **it is in cities where the battle for sustainability will be won or lost.**



The Human Dimension



*“We love what we enjoy
and
we protect what we love”*

Judy Ling Wong CBE

*From Contact with Nature to
Contributing to Nature*

The Countryside and All of Nature is Also Ours

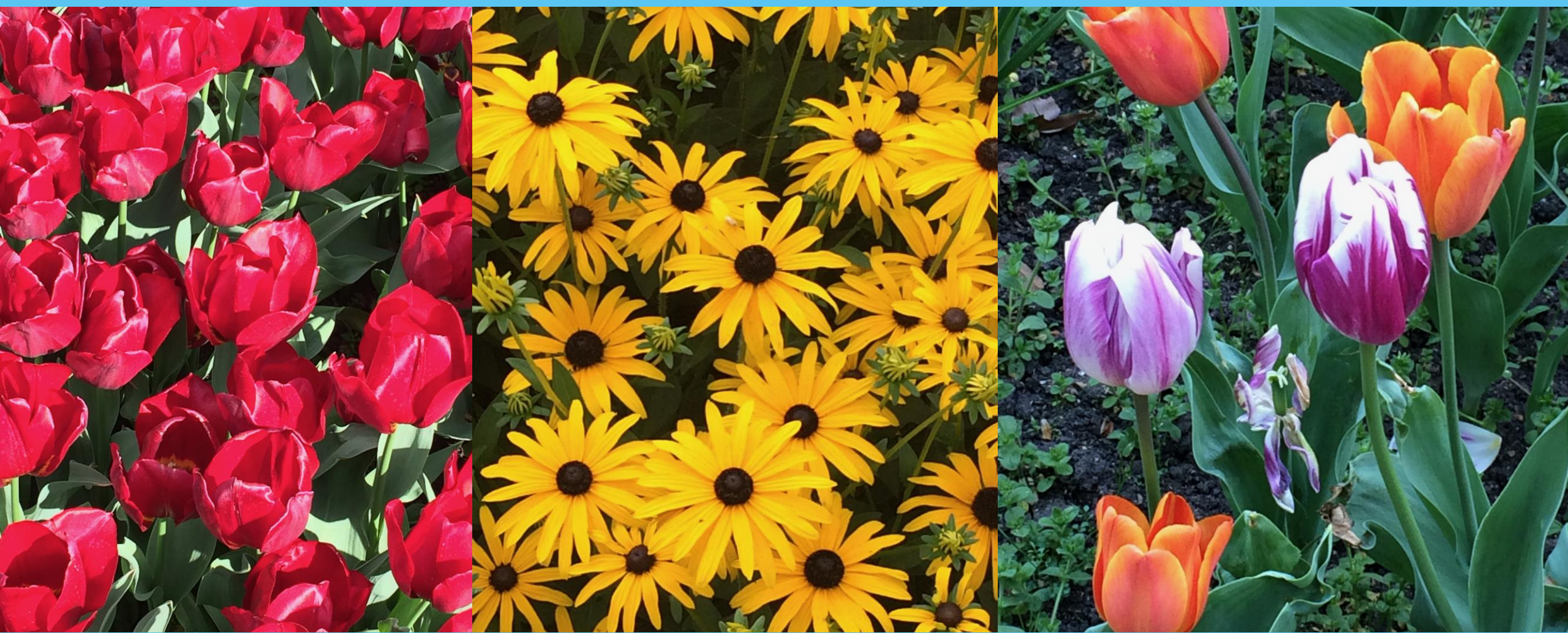


- Trips as of right to access our most beautiful natural places
- We cannot be prisoners in cities
- Knowing nature at large inspires different local actions and rich local futures

New swimming lake created as part of the Beckenham Palace Park restoration project



Lingering in Parks and the Pleasure of Seasonal Displays



Supporting activities beyond Park Boundaries

The Lambeth Plots initiative – ARUP and Myatt's Fields Park

Mapping Lambeth's food growing potential and enhancing Food Security and Resilience



Myatt's Fields Park grows and gives away 50,000 plug plants for allotments, gardens and balconies beyond its boundaries to enable the community to extend the growing and harvesting season

The Use of Arts enables fun and informal education



“There is no such thing
as a
purely environmental initiative

**A so-called
purely environmental initiative
is one that
has rejected
its social, cultural
and
economic dimensions.”**

*Judy Ling Wong 1987
Black Environment Network*



New wave of Green Jobs to meet the legal requirement of Net Zero



The Green Jobs Taskforce forms part of the government's ambitious plan to build back greener and achieve net zero emissions by 2050. £12billion. Creation of 2 million jobs

The Green Apprenticeships Advisory Panel, supporting the Taskforce, will help focus efforts to make sure the right skills are in place for the future workforce:

- **enhancing our current apprenticeships** to ensure that they meet the needs of the employers within the growing green economy
- **creating new apprenticeships** to reflect new occupations to meet the challenge to reach net-zero carbon

What are the new green jobs set within parks?

First Global Stakeholders Forum 2019 – UN Habitat Assembly – New Urban Agenda



The New Urban Agenda embodies three guiding principles

Guiding Principles	Actions
Leave no one behind, ensure urban equity and eradicate poverty	<ul style="list-style-type: none">▪ Providing equitable access for all, to physical and social infrastructure<ul style="list-style-type: none">- Adequate housing and shelter at the center of the agenda- Public spaces as an enabler of socio-economic function of the city▪ Recognizing and leveraging culture, diversity and safety in cities▪ Enabling and strengthening participation and enhancing liveability and quality of life.
Achieve sustainable and inclusive urban prosperity and opportunities for all	<ul style="list-style-type: none">▪ Enhancing agglomeration benefits of urbanization and avoiding land speculation,▪ Fair and equitable employment creation, productivity, competitiveness, diversification and▪ Innovation through a sustainable economic development
Foster ecological and resilient cities and human settlements	<ul style="list-style-type: none">▪ Driving sustainable patterns of consumption and production,▪ Protecting and valuing ecosystems and biodiversity, and▪ Adapting to and mitigating the impact of climate change while increasing urban systems resilience to physical, economic, and social shocks and stresses

80% of the UK's population live in urban areas



GI Standards Keywords

- Truly local green spaces
- Green Neighbourhoods
- Placemaking
- Multifunctional spaces
- Environmental features to meet needs
- Health and wellbeing
- Cultural connections with nature
- Resilience
- Climate Change
- Monitoring and targeting efforts
- Addressing inequalities

An expanded role for parks?



***Let's consider negotiating an expanded role
for the contribution of parks and the park community
as a formidable force for climate action***

Parks. government, local authorities, environmental and social organisations, community groups and individuals can come together to make an integrated and expanded program of climate action



Contact: judy@ben-network.org.uk

www.judylingwong.co.uk

www.ben-network.org.uk

Downloadable resources/publications on BEN website

Tony Leach
Chief Executive
Parks for London

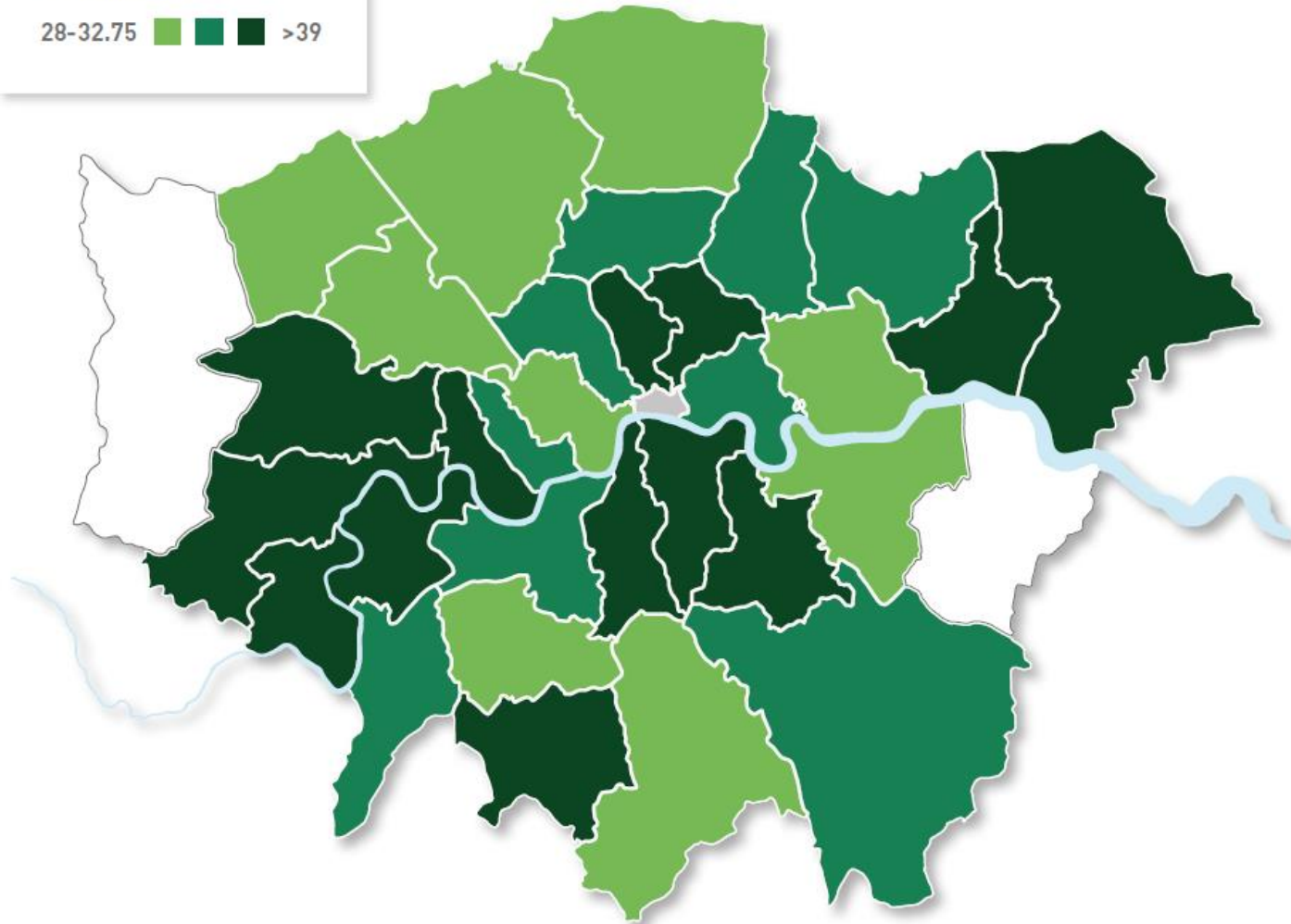


**Parks for
London**

GOOD PARKS FOR
LONDON 2021

Overall scores

28-32.75    >39



Parks for
London



GL Hearn
Part of Capita plc

BEN



**CROSS RIVER
PARTNERSHIP**
Delivering London's Future Together

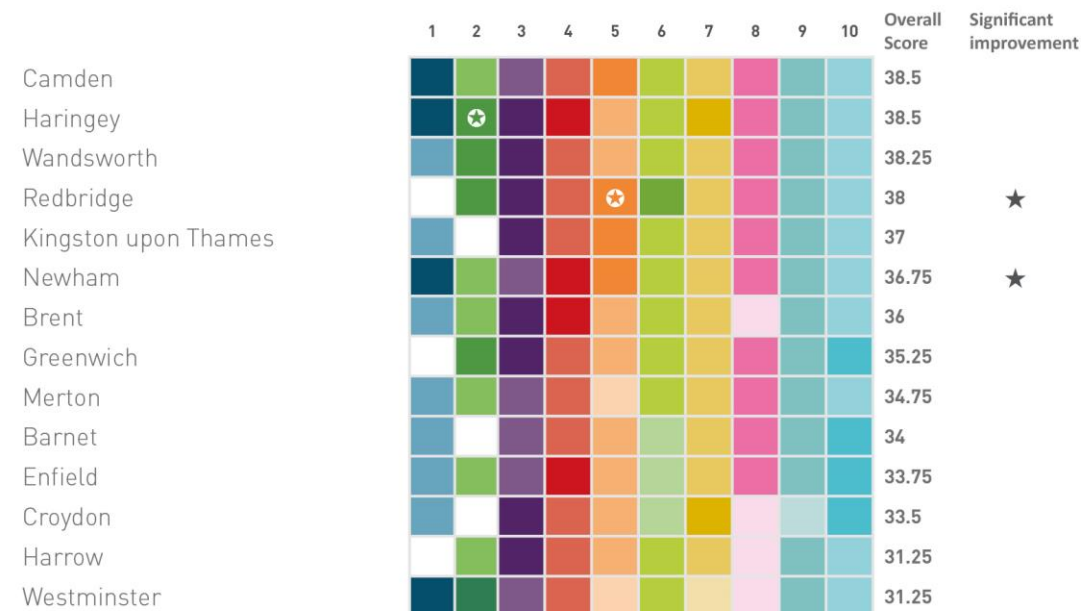
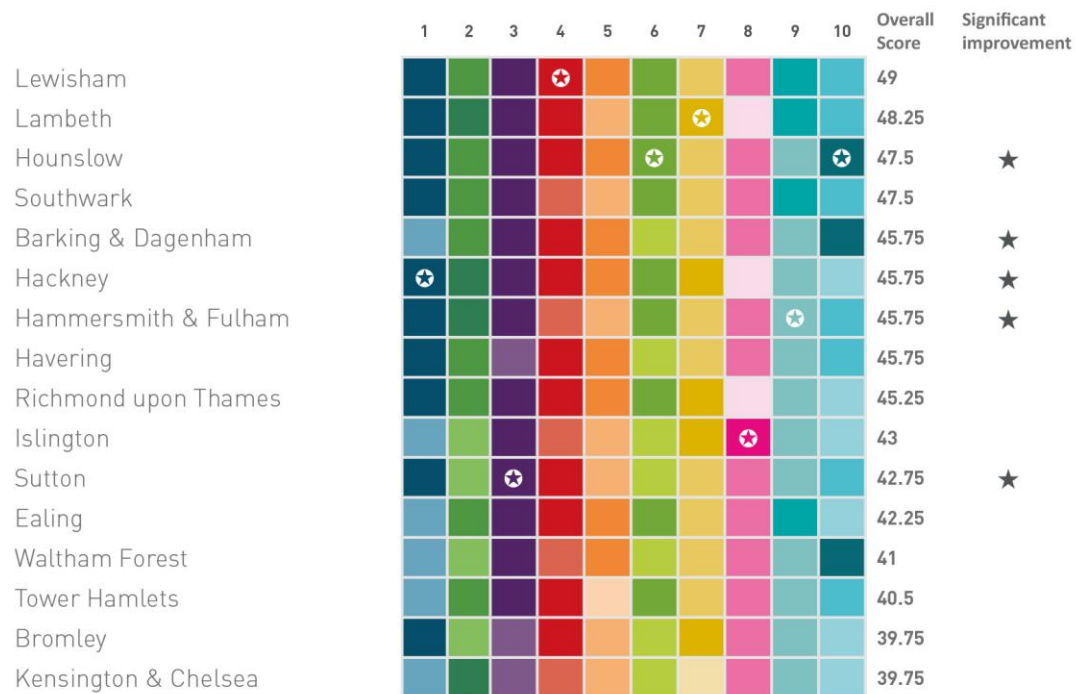
SUPPORTED BY

MAYOR OF LONDON



Department
for Environment
Food & Rural Affairs

Overall scores



The City of London Gardens (CoL) has not been included in these scores as the data does not represent a comparable data set and cannot refer to the wider portfolio of work undertaken by the substantial portfolio of CoL Open Spaces run as charities outside the physical boundary of the Square Mile.

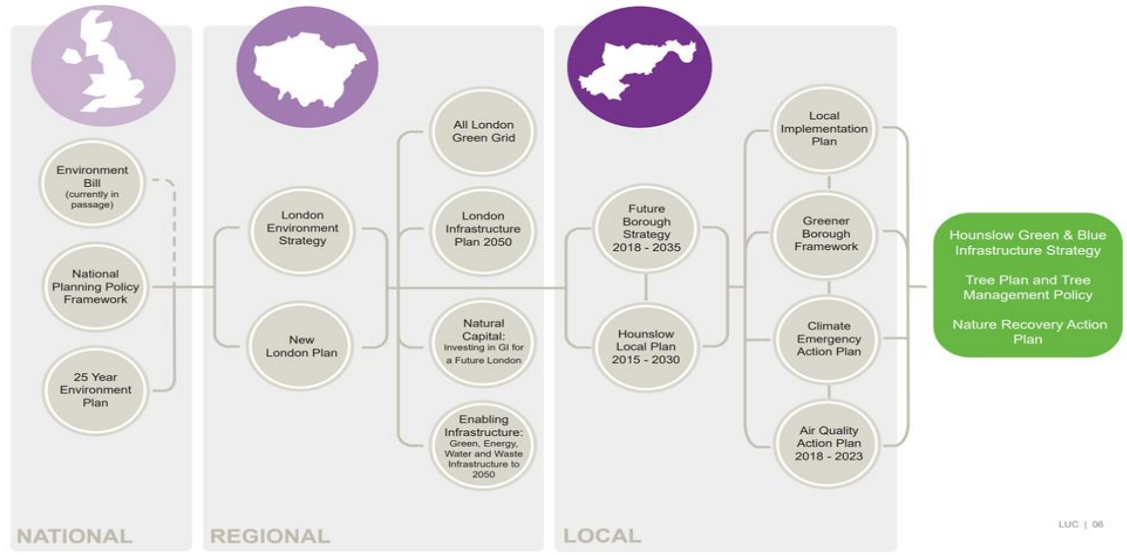
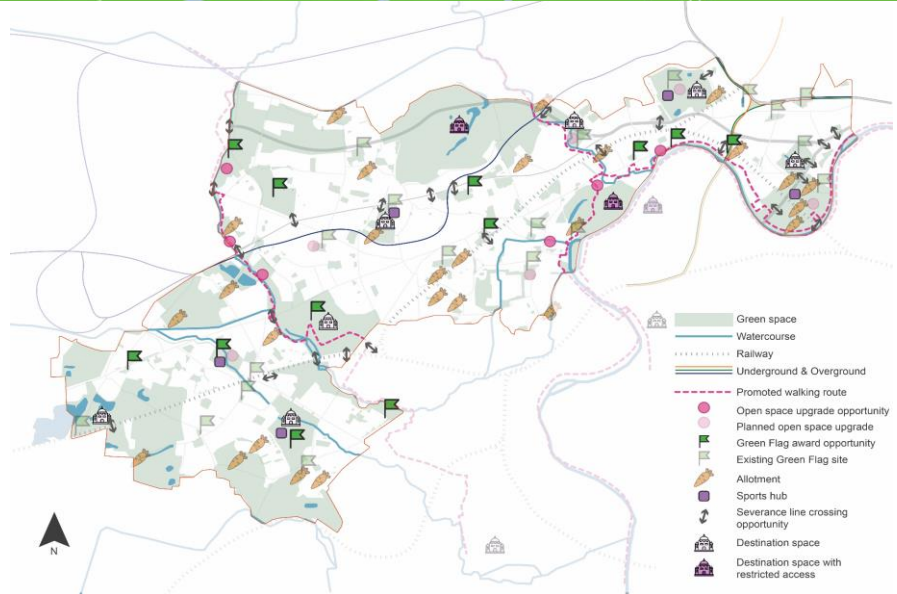
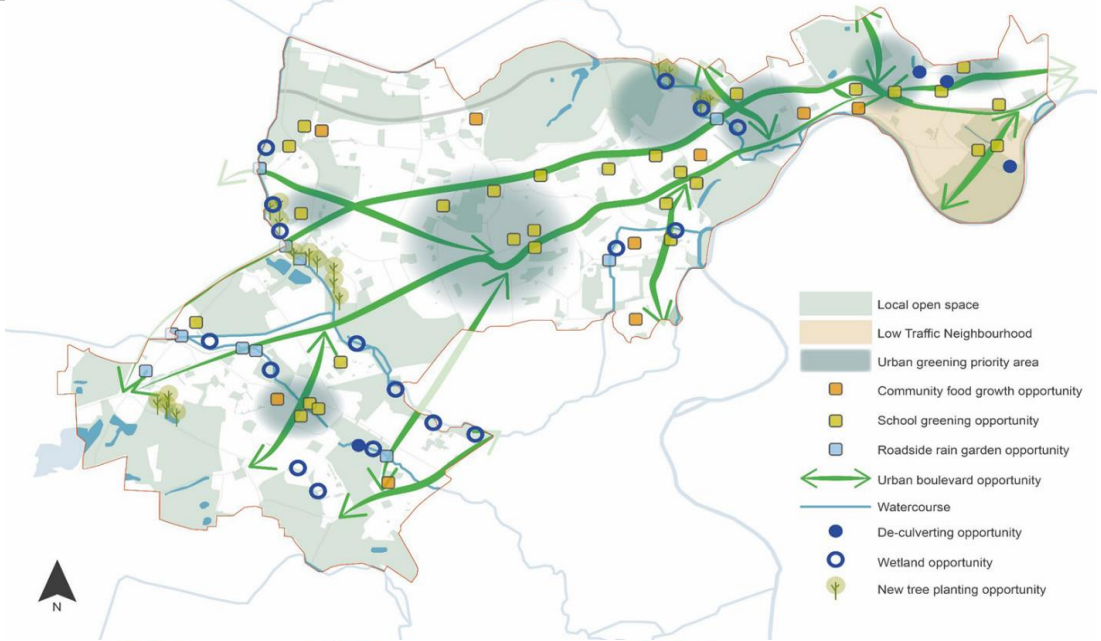
A blank square indicates that a borough has either not submitted data for a criterion or the data is not available or a score has not been achieved. Featured case studies are marked with a ★, and a ★ represents a significantly improved score on the prior year.

Higher scores are represented by darker shading of colour.



Councillor Samia Chaudhary
London Borough of Hounslow





Action in our Parks – Supporting Nature

- ▶ Wildflower meadows, trees
- ▶ Community gardens
- ▶ London in bloom
- ▶ Volunteer hours 16,000+ a year
- ▶ Environmental Champions
- ▶ Circular economy
- ▶ Greentalk- an app to learn and act on protecting our trees



Greentalk

Launched in April 2021

- Maps over 120,000 trees and all green spaces across the borough
- Empowers and supports community groups
- Enables and encourages active travel
- Supports education, health and wellbeing activities
- Brings together tree data from three partners into a single public-facing interface
- Hub for Adoption, Watering and Tree Care resources
- Sharing guidance on resident-driven tree care
- Showing the work done by Tree Partners

Welcome to Hounslow Greentalk!

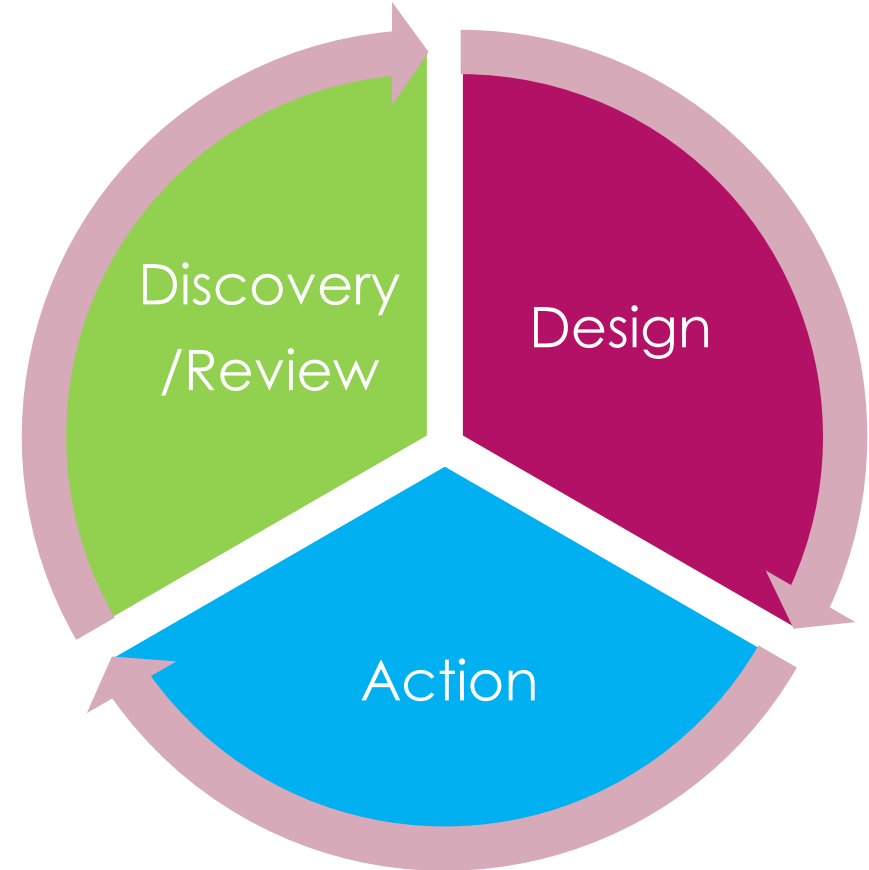


Hounslow Greentalk is a unique service to help residents connect with and explore the borough's nature and wildlife, including trees, parks and much more. See all the trees...

[Find out more](#)

The Approach: Co-design and Participation

- ▶ Participation and collaboration in all three stages
- ▶ Given the position of “experts”
- ▶ Self interest and active recruitment
- ▶ Setting the ground rules- ToRs and MoUs
- ▶ Training and continuous improvement
- ▶ Independent action
- ▶ Learning lessons



Example: Bridge House Pond MHCLG pocket parks

- ▶ Derelict park
- ▶ Fundraising, engagement and evaluation led by Friends
- ▶ Project managed by the Council
- ▶ Evaluation
 - ▶ 69% uses park more
 - ▶ 63% feels more connected
 - ▶ Improvements rated 8.6/10
- ▶ National Park City event
- ▶ Green Flag achieved
- ▶ London in Bloom silver



Q&A Session



Parks for
London



GL Hearn
Part of Capita plc

BEN



London Borough
of Hounslow



**CROSS RIVER
PARTNERSHIP**
Delivering London's Future Together

SUPPORTED BY

MAYOR OF LONDON



Department
for Environment
Food & Rural Affairs

Sign up to our next event!



CRP Lunchtime Launch 12

Green Logistics London: A Healthier City for All

**Thursday 16th December 2021
1:15pm - 2pm**

Thank You!



Tony Leach
Chief Executive
Parks for London
tony.leach@parksforlondon.org.uk



Joanne Dennis-Jones
National Head of Planning
GL Hearn
joanne.dennis-jones@glhearn.com



Judy Ling Wong CBE
Honorary President
Black Environment Network
judy@ben-network.org.uk



Councillor Samia Chaudhary
London Borough of Hounslow
Samia.Chaudhary@hounslow.gov.uk



Rachael Aldridge
Communications Project Manager
Cross River Partnership
rachaelaldridge@crossriverpartnership.org



www.crossriverpartnership.org



@CrossRiverPartnership



@CrossRiverPship



Cross River Partnership



linkedin.com/company/cross-river-partnership/



www.crossriverpartnership.org/newsletter



Search 'Cross River Partnership' on YouTube