



Railway Infrastructure: Dawn of a New Era?

Thursday 29th July
1:15pm – 2pm



CAMDEN
TOWN
UNLIMITED

Better
Bankside

 **CROSS RIVER
PARTNERSHIP**
Delivering London's Future Together

SUPPORTED BY
MAYOR OF LONDON


Department
for Environment
Food & Rural Affairs

Today's Speakers



Hasanul Hoque
Operations Manager
Camden Town Unlimited

Speaker



Valerie Beirne
Bankside Urban Forest
Manager
Better Bankside

Speaker



Rachael Aldridge
Project Officer
Cross River Partnership

Chair and Technical Lead



Joshua West
Communications and Business
Development Manager
Cross River Partnership

Speaker



Fiona Coull
Project Manager
Cross River Partnership

Chat Moderator

CAMDEN
TOWN
UNLIMITED

Better
Bankside

CROSS RIVER
PARTNERSHIP
Delivering London's Future Together

SUPPORTED BY
MAYOR OF LONDON

Department
for Environment
Food & Rural Affairs

Today's Agenda

1. Cross River Partnership Introduction
2. The Highline – Camden Town Unlimited
3. The Low Line – Better Bankside
4. CRP and Rail Freight



CAMDEN
TOWN
UNLIMITED

Better
Bankside

 CROSS RIVER
PARTNERSHIP
Delivering London's Future Together

SUPPORTED BY
MAYOR OF LONDON


Department
for Environment
Food & Rural Affairs

Please pose your questions
and thoughts throughout
this session in the chat box
to the right



CAMDEN
TOWN
UNLIMITED

Better
Bankside

 **CROSS RIVER
PARTNERSHIP**
Delivering London's Future Together

SUPPORTED BY
MAYOR OF LONDON


Department
for Environment
Food & Rural Affairs

Introduction and Context

Rachael Aldridge

Cross River Partnership





**CROSS RIVER
PARTNERSHIP**

Delivering London's Future Together



PEOPLE



PLACES



**Annual Report
2020-2021**

**Business Plan
2021-2022**

PROJECTS

CAMDEN
TOWN
UNLIMITED

**Better
Bankside**



**CROSS RIVER
PARTNERSHIP**

Delivering London's Future Together

SUPPORTED BY

MAYOR OF LONDON



Department
for Environment
Food & Rural Affairs

02 Our vision

Our core values



We are experts in delivering positive change. Our projects have collaborated across public, private, voluntary and community sectors for over 25 years.



We are London's largest partnership delivery organisation. Our partners range from Local Authorities and Business Improvement Districts, to Landowners and Strategic Agencies.



We are all about empowering People, to deliver innovative Projects, that create great Places. Our work transects themes such as Place Making; Health and Wellbeing; Addressing Inequalities; Sustainability; Air Quality; Freight, Transport and Active Travel; Energy; Environment; Culture; and Lighting.



We are forward thinkers, embracing collaboration for a sustainable future fit for all. We work with our partners to shape London's fabric and operation, supporting residents, businesses and visitors to all thrive in the city.

CAMDEN
TOWN
UNLIMITED

Better
Bankside

CROSS RIVER
PARTNERSHIP
Delivering London's Future Together

SUPPORTED BY
MAYOR OF LONDON



Department
for Environment
Food & Rural Affairs

03 Partners

Cross River Partnership is proud to be working collaboratively with all of these public, private and community partners across central London and beyond.

- 1 Angel London
- 2 Better Bankside
- 3 Brixton BID
- 4 Cadogan
- 5 Camden Town Unlimited
- 6 Cheapside Business Alliance
- 7 Euston Town BID
- 8 Hammersmith BID
- 9 Hatton Garden BID
- 10 Marble Arch BID
- 11 Midtown BID
- 12 Paddington Now

- 13 South Bank BID
 - 14 Team London Bridge
 - 15 The Fitzrovia Partnership
 - 16 The Northbank BID
 - 17 Vauxhall One
 - 18 Victoria BID
-  **CRP Board Boroughs**
-  **Boroughs CRP works with**
-  **CRP Lead Accountable Body:**
Westminster City Council

CRP Strategic Partners:

- Greater London Authority
- Groundwork London
- London and Partners
- Network Rail
- Port of London Authority
- Transport for London



**CAMDEN
TOWN
UNLIMITED**

**Better
Bankside**

 **CROSS RIVER
PARTNERSHIP**
Delivering London's Future Together

SUPPORTED BY
MAYOR OF LONDON


Department
for Environment
Food & Rural Affairs



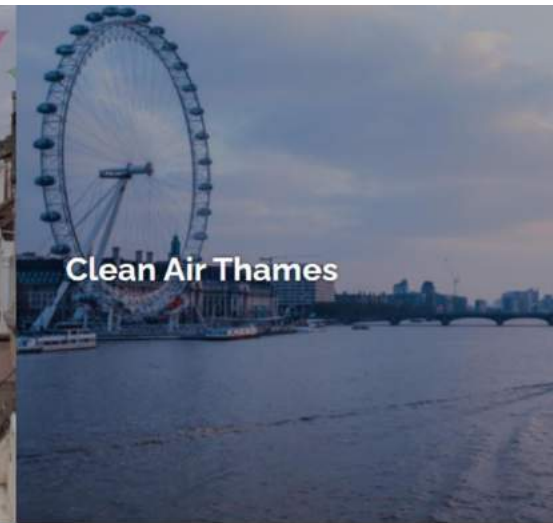
Clean Air Villages 4



Clean Air Villages 3



Healthy Streets Everyday



Clean Air Thames



Central London Sub-Regional Transport Partnership



Town Centre Futures



EV Fleet-Centred Local Energy System (EFLES)



Lighting London Sustainably

CAMDEN
TOWN
UNLIMITED

Better
Bankside

CROSS RIVER
PARTNERSHIP
Delivering London's Future Together

SUPPORTED BY
MAYOR OF LONDON

Department
for Environment
Food & Rural Affairs

CRP's Light at the End of the Tunnel (LET)



CAMDEN
TOWN
UNLIMITED

**Better
Bankside**

 **CROSS RIVER
PARTNERSHIP**
Delivering London's Future Together

SUPPORTED BY
MAYOR OF LONDON


Department
for Environment
Food & Rural Affairs

Light Improving Walkability via Arches



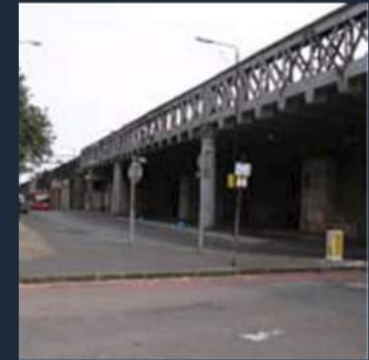
Before: Salamanca



Before: Black Prince Road



Before: Boyce Street



Before: Druid Street



After: Salamanca



After: Black Prince Road



After: Boyce Street



After: Druid Street

Lighting under Arches for Accessibility



CAMDEN
TOWN
UNLIMITED

**Better
Bankside**

 **CROSS RIVER
PARTNERSHIP**
Delivering London's Future Together

SUPPORTED BY
MAYOR OF LONDON


Department
for Environment
Food & Rural Affairs

The Camden Highline

Hasanul Hoque

Camden Town Unlimited

**CAMDEN
TOWN
UNLIMITED**

CAMDEN
HIGH
LINE

A new park in the sky
for London

CAMDEN
TOWN
UNLIMITED

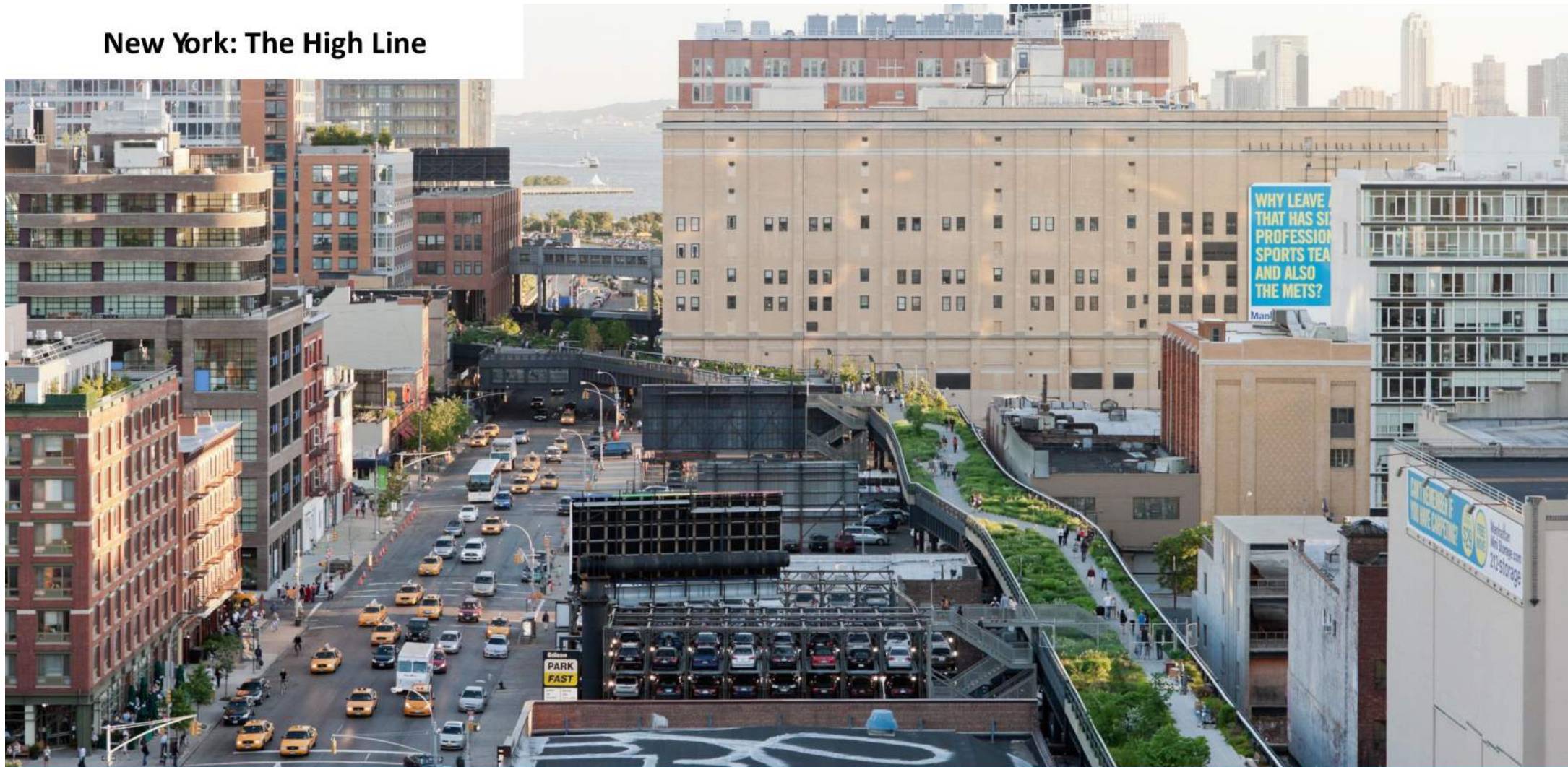
Better
Bankside

 CROSS RIVER
PARTNERSHIP
Delivering London's Future Together

SUPPORTED BY
MAYOR OF LONDON


Department
for Environment
Food & Rural Affairs

New York: The High Line



CAMDEN
TOWN
UNLIMITED

Better
Bankside

 **CROSS RIVER
PARTNERSHIP**
Delivering London's Future Together

SUPPORTED BY
MAYOR OF LONDON


Department
for Environment
Food & Rural Affairs

Paris: Promenade Plantée



CAMDEN
TOWN
UNLIMITED

Better
Bankside

 **CROSS RIVER
PARTNERSHIP**
Delivering London's Future Together

SUPPORTED BY
MAYOR OF LONDON


Department
for Environment
Food & Rural Affairs



Camden Highline

CAMDEN
TOWN
UNLIMITED

Better
Bankside

 CROSS RIVER
PARTNERSHIP
Delivering London's Future Together

SUPPORTED BY
MAYOR OF LONDON



Department
for Environment
Food & Rural Affairs

August 2008

Repainted Camden Road Bridge



September 2014

Ran public art competition



November 2015

Oliver O'Brien blog



THE CAMDEN HIGH LINE

May 2016

Kentish Towner cover story



November 2016

First meeting with Network Rail



CAMDEN
TOWN
UNLIMITED

Better
Bankside

CROSS RIVER
PARTNERSHIP
Delivering London's Future Together

SUPPORTED BY
MAYOR OF LONDON

Department
for Environment
Food & Rural Affairs



CAMDEN
TOWN
UNLIMITED

Better
Bankside

CROSS RIVER
PARTNERSHIP
Delivering London's Future Together

SUPPORTED BY
MAYOR OF LONDON

Department
for Environment
Food & Rural Affairs

plans for a high line-style park in london receive backing from city's mayor

Camden Highline gets backing from London Mayor

London's Camden High Line project gets support from mayor

It would transform an abandoned elevated railway into a park

Sadiq Khan throws weight behind Camden highline project

BOARD!

Sadiq Khan pledges his support for Camden Highline proposal

EveningStandard News Football Wimbledon Going Out

Plans to link Camden and King's Cross with elevated park to rival New York High Line

JANNA ARONSON | Saturday 27 May 2017 05:02 BST



Mayor of London Sadiq Khan backs Camden High Line bid



An elevated park from Kentish Town to King's Cross - plus three other inspiring local ideas

Plans to link Camden and King's Cross with elevated park to rival New York High Line



Sadiq Khan has backed plans to transform a section of disused railway between Camden and King's Cross into a public garden set to rival the New York Highline.

Walking high on the other

CAMDEN TOWN UNLIMITED

Better Bankside

CROSS RIVER PARTNERSHIP
Delivering London's Future Together

SUPPORTED BY
MAYOR OF LONDON

Department for Environment Food & Rural Affairs



CAMDEN
TOWN
UNLIMITED

Better
Bankside

 **CROSS RIVER
PARTNERSHIP**
Delivering London's Future Together

SUPPORTED BY
MAYOR OF LONDON


Department
for Environment
Food & Rural Affairs

“London’s answer to
the New York High
Line”

“Open to everyone”

“Bringing the
community out into
public areas”

“Not motivated by a
desire to make money”

“Improving air quality”

**“Making use of
something unused”**

“Connecting King’s
Cross to Camden Town”

Vision

“Created by local
effort”

**“Transforming the area around
Camden”**

**“Good for business and
great for the
community”**

“Encourage people to
walk”

“Speaks to Camden’s
creativity”

“Pedestrian friendly park”

“Innovative urban
development”

CAMDEN
TOWN
UNLIMITED

**Better
Bankside**

 **CROSS RIVER
PARTNERSHIP**
Delivering London’s Future Together

SUPPORTED BY
MAYOR OF LONDON


Department
for Environment
Food & Rural Affairs



CAMDEN
TOWN
UNLIMITED

**Better
Bankside**

 **CROSS RIVER
PARTNERSHIP**
Delivering London's Future Together

SUPPORTED BY
MAYOR OF LONDON


Department
for Environment
Food & Rural Affairs

We've started community activity already, with workshops in local schools...



...and volunteer-led improvements to
Camden Gardens



CAMDEN
TOWN
UNLIMITED

Better
Bankside

 **CROSS RIVER
PARTNERSHIP**
Delivering London's Future Together

SUPPORTED BY
MAYOR OF LONDON


Department
for Environment
Food & Rural Affairs

75 entries to design competition



CAMDEN
TOWN
UNLIMITED

Better
Bankside

CROSS RIVER
PARTNERSHIP
Delivering London's Future Together

SUPPORTED BY
MAYOR OF LONDON

Department
for Environment
Food & Rural Affairs

Design team announcement press

THE
NEW YORKER

A New Sky Garden for London

Like New York's version, the Camden Highline will be designed by James Corner, occupy a former rail track, and attract selfie-taking tourists. Unlike New York's, it may not invite a boom of luxury condos.

The
Guardian

Manhattan makeover for London with floating green walkway plan

The man who helped revitalise New York with a linear park on a disused elevated railway hopes to do the same for the UK capital.

London
Evening
Standard

£35million fundraising drive for London's answer to the New York High Line

The backers of London's own version of the New York High Line are set to launch a £35 million fundraising campaign to pay for the ambitious project.

The
Telegraph

London to get its own Manhattan-style 'Highline'

The 'park in the sky' is set for a grand opening in 2024.

Daily Mail

Plan to turn disused Camden railway into a lush tree-lined 'garden walkway'

Latest green project in London's eco-drive will turn almost a mile of tracks turned into a 'park in the sky'.

TimeOut

Our very own NYC-style High Line is well on its way

The park-on-a-bridge dream could be a reality soon.

CAMDEN
TOWN
UNLIMITED

Better
Bankside

CROSS RIVER
PARTNERSHIP
Delivering London's Future Together

SUPPORTED BY
MAYOR OF LONDON

Department
for Environment
Food & Rural Affairs

Progress to date

- Technical and financial feasibility work completed.
- Wide ranging support, including adoption as Camden Council policy and inclusion in Sadiq Khan's 2021 manifesto.
- 1,550 people have been on a walking tour. Even under Covid restrictions a further 100+ people have done a self-guided audio walk.
- 300 people have taken part in volunteering activities.
- 1,000+ donations including from the Mayor of London, Camden Council, MHCLG and various Camden residents and businesses
- Ongoing education programme. 1,000+ hours of education workshops provided so far.
- Funding raised for design competition, detailed design and planning permission.
- James Corner Field Operations + vPPR appointed to lead the engagement & design team.

Q&A Session

Further thoughts on future potential uses of urban railway infrastructure.



CAMDEN
TOWN
UNLIMITED

**Better
Bankside**

 **CROSS RIVER
PARTNERSHIP**
Delivering London's Future Together

SUPPORTED BY
MAYOR OF LONDON


Department
for Environment
Food & Rural Affairs

The Low Line

Val Beirne

Better Bankside

Better
Bankside



**Better
Bankside**

**TEAM
LONDON
BRIDGE**

THE BLUE

Southwark
Council
southwark.gov.uk

THE
ARCH
CO

_Low_Line

CAMDEN
TOWN
UNLIMITED

**Better
Bankside**

**CROSS RIVER
PARTNERSHIP**
Delivering London's Future Together

SUPPORTED BY
MAYOR OF LONDON


Department
for Environment
Food & Rural Affairs



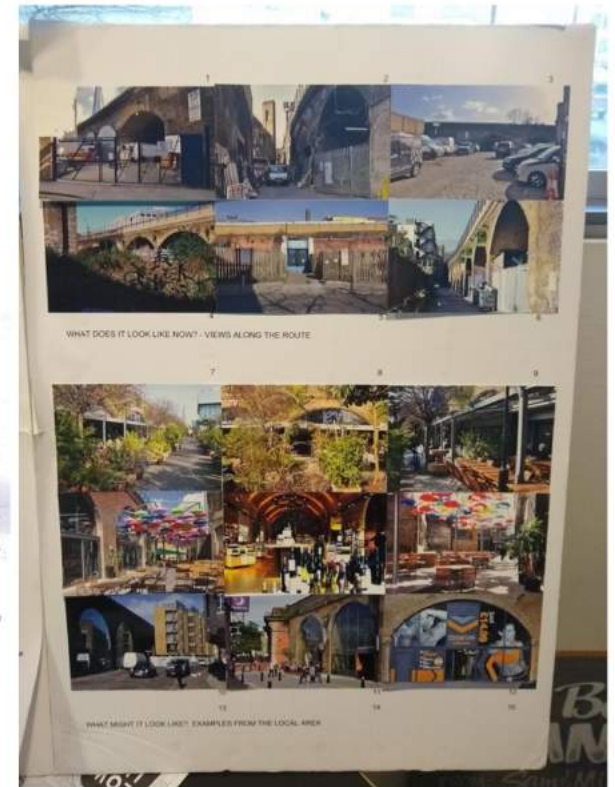
Inter-linked themes

- Create a green corridor connecting people and wildlife, increase environmental resilience
- Improve accessibility and connectivity
- Promote economic activity within the arches

LIGHT AT THE END OF THE TUNNEL
Transforming railway viaducts
in central London



_Low_Line



CAMDEN
TOWN
UNLIMITED

Better
Bankside

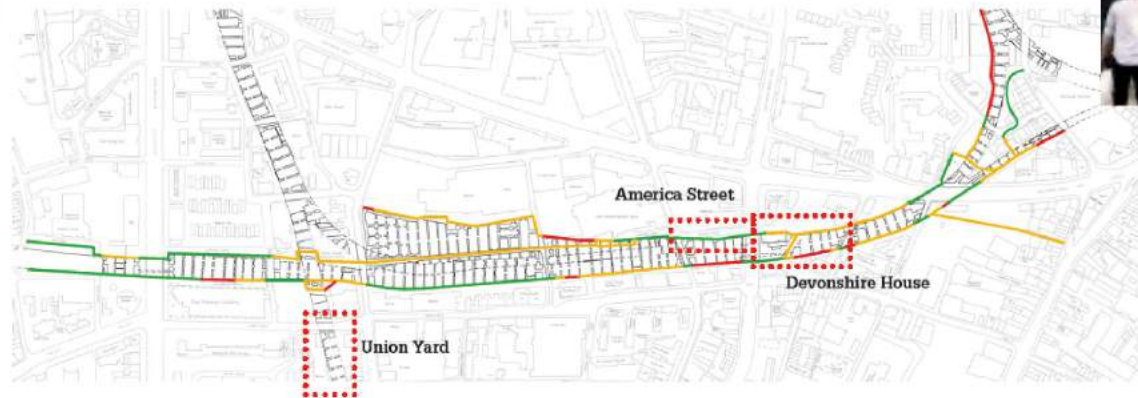
CROSS RIVER
PARTNERSHIP
Delivering London's Future Together

SUPPORTED BY
MAYOR OF LONDON

Department
for Environment
Food & Rural Affairs

THE LOW LINE

A new direction through
the heart of Bankside
A document for discussion
prepared by Better Bankside



_Low_Line

CAMDEN
TOWN
UNLIMITED

Better
Bankside

CROSS RIVER
PARTNERSHIP
Delivering London's Future Together

SUPPORTED BY
MAYOR OF LONDON


Department
for Environment
Food & Rural Affairs

2016



_Low_Line

CAMDEN
TOWN
UNLIMITED

Better
Bankside

CROSS RIVER
PARTNERSHIP
Delivering London's Future Together

SUPPORTED BY
MAYOR OF LONDON

Department
for Environment
Food & Rural Affairs

2016



_Low_Line

CAMDEN
TOWN
UNLIMITED

Better
Bankside

CROSS RIVER
PARTNERSHIP
Delivering London's Future Together

SUPPORTED BY
MAYOR OF LONDON

Department
for Environment
Food & Rural Affairs

2017



○ ————— ○

Better Bankside launches Low Line way-markers and walking guide to encourage greater exploration across the rail viaduct.

_Low_Line

CAMDEN
TOWN
UNLIMITED

Better
Bankside

CROSS RIVER
PARTNERSHIP
Delivering London's Future Together

SUPPORTED BY
MAYOR OF LONDON


Department
for Environment
Food & Rural Affairs

2017

DM25 Railway arches

Planning permission will be granted for business uses (B Use Classes), retail (A Use Classes) and community facilities (D Use Classes) in railway arches.

Reasons

Southwark Council is supporting and encouraging creative and vibrant uses within the over 800 railway arches. They are cheap spaces to rent and are well suited to 'incubating' smaller businesses and helping them to grow. They also add character and are interesting places for shops, cultural and community uses and restaurants.

DM45 Low Line walking routes

Planning permission will be granted for development that supports the implementation of 'Low Line' walking routes across the borough. Development that hinders the implementation or obstruction of the routes will not be supported.

Reasons

Southwark's 'Low Line' walking routes that seek to link existing centres of activity and enterprise by creating new attractive routes alongside rail arches and viaducts and their associated spaces and streets. The Low Line routes will facilitate economic growth and improve access and permeability along the rail viaducts.

The indicative Low Line routes are in the following locations and set out in Figure 6:

- Waterloo to Maltby Street to Rotherhithe New Road
- Camberwell to River Thames
- Rye Lane to Old Kent Road, including the Peckham Coal Line

56 New Southwark Plan Preferred Option

73 New Southwark Plan Preferred Option

Southwark publish Low Line policies as part of the draft New Southwark Plan, recognising the potential of planning policy to help deliver the Low Line.

_Low_Line

CAMDEN
TOWN
UNLIMITED

Better
Bankside

CROSS RIVER
PARTNERSHIP
Delivering London's Future Together

SUPPORTED BY
MAYOR OF LONDON


Department
for Environment
Food & Rural Affairs

390
arches

110k
sqm space

250
businesses

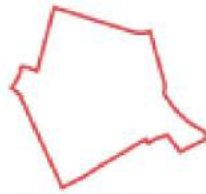
2,500
jobs

£4.3m
rates

50+
food
businesses



Low Line setting =
21x Trafalgar Square
260,000m²



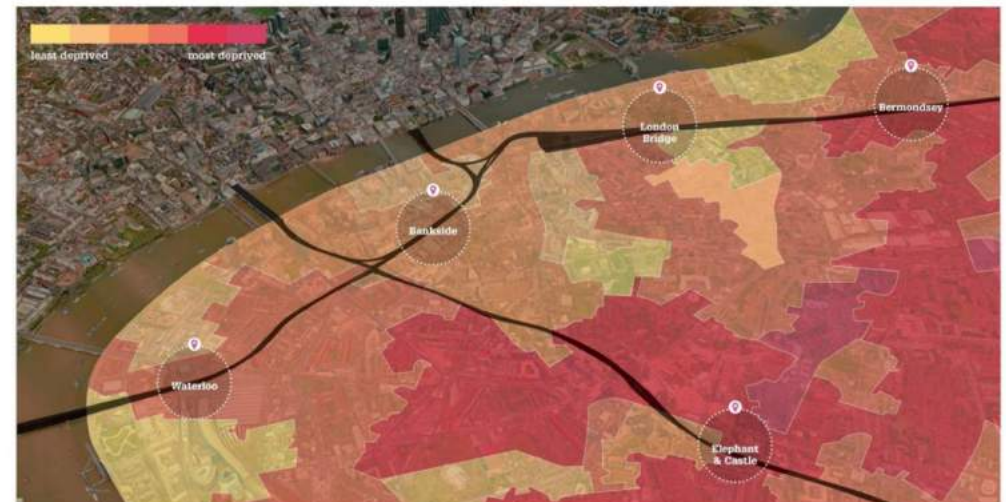
Low Line + setting =
4x Elephant Park
masterplan area
520,000m²



Low Line internal space
= 2.2 x Gherkins
110,000 sqm

The Low Line

Unlocking barriers to growth



_Low_Line

CAMDEN
TOWN
UNLIMITED

Better
Bankside

 **CROSS RIVER
PARTNERSHIP**
Delivering London's Future Together

SUPPORTED BY
MAYOR OF LONDON


Department
for Environment
Food & Rural Affairs



**Better
Bankside**

**TEAM
LONDON
BRIDGE**

THE BLUE

Southwark
Council
southwark.gov.uk

THE
ARCH
CO

**BOROUGH
MARKET**

_Low_Line

CAMDEN
TOWN
UNLIMITED

**Better
Bankside**

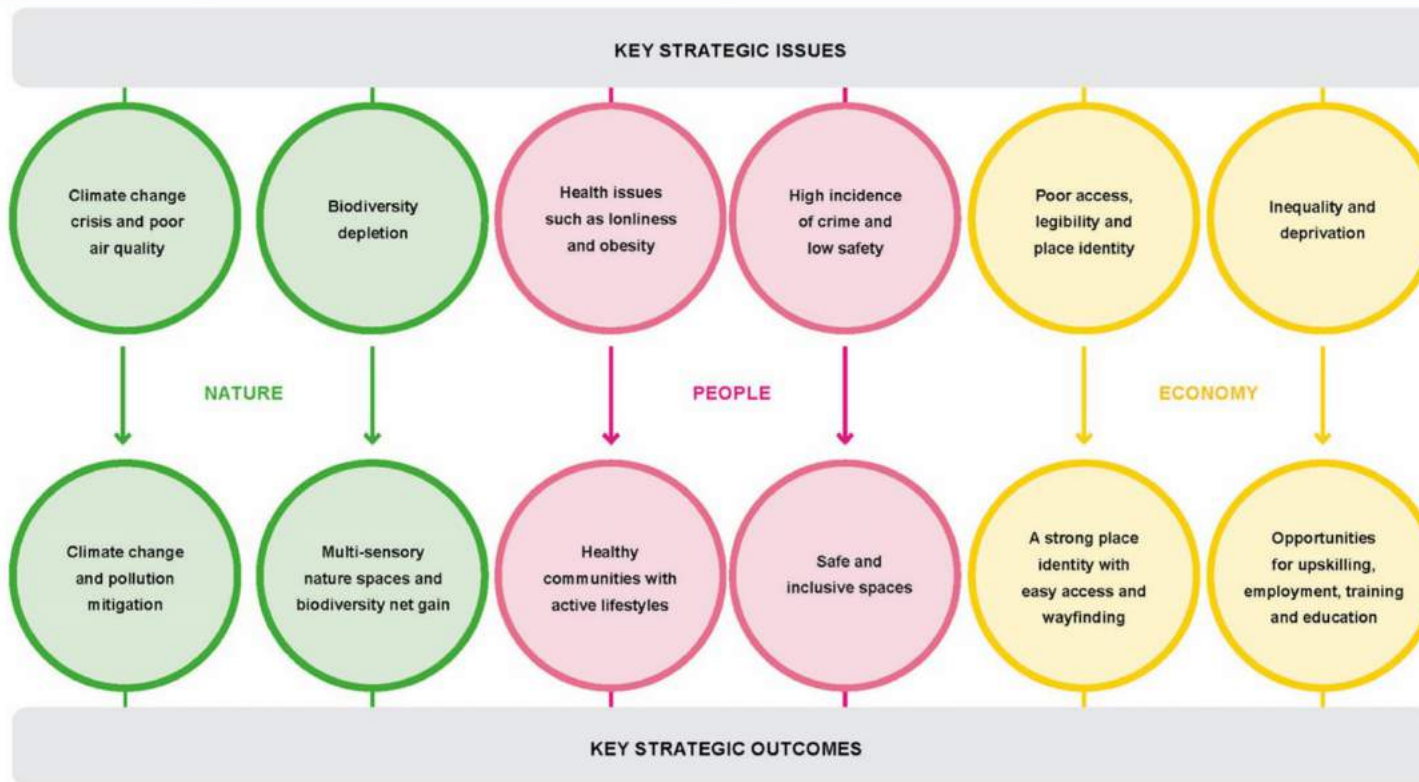


**CROSS RIVER
PARTNERSHIP**
Delivering London's Future Together

SUPPORTED BY
MAYOR OF LONDON



Department
for Environment
Food & Rural Affairs



_Low_Line

CAMDEN
TOWN
UNLIMITED

Better
Bankside

CROSS RIVER
PARTNERSHIP
Delivering London's Future Together

SUPPORTED BY
MAYOR OF LONDON

Department
for Environment
Food & Rural Affairs



_Low_Line

CAMDEN
TOWN
UNLIMITED

**Better
Bankside**

 **CROSS RIVER
PARTNERSHIP**
Delivering London's Future Together

SUPPORTED BY
MAYOR OF LONDON


Department
for Environment
Food & Rural Affairs



_Low_Line

CAMDEN
TOWN
UNLIMITED

Better
Bankside

 **CROSS RIVER
PARTNERSHIP**
Delivering London's Future Together

SUPPORTED BY
MAYOR OF LONDON


Department
for Environment
Food & Rural Affairs



_Low_Line

CAMDEN
TOWN
UNLIMITED

Better
Bankside

 CROSS RIVER
PARTNERSHIP
Delivering London's Future Together

SUPPORTED BY
MAYOR OF LONDON


Department
for Environment
Food & Rural Affairs



_Low_Line

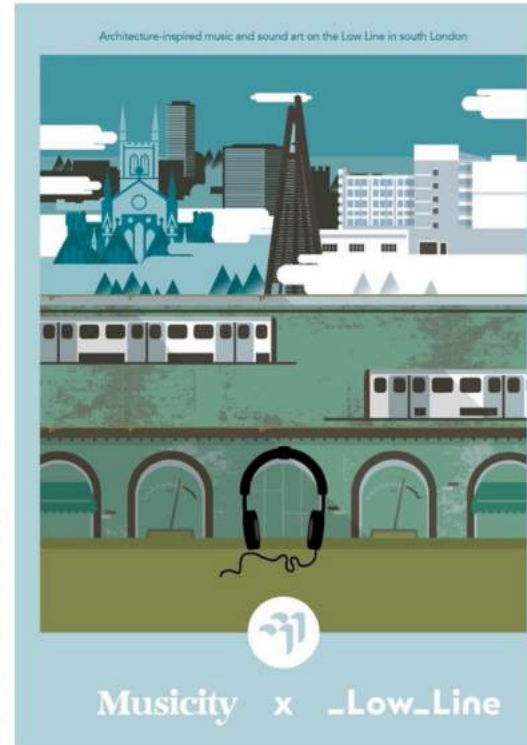
CAMDEN
TOWN
UNLIMITED

Better
Bankside

 **CROSS RIVER
PARTNERSHIP**
Delivering London's Future Together

SUPPORTED BY
MAYOR OF LONDON


Department
for Environment
Food & Rural Affairs



_Low_Line

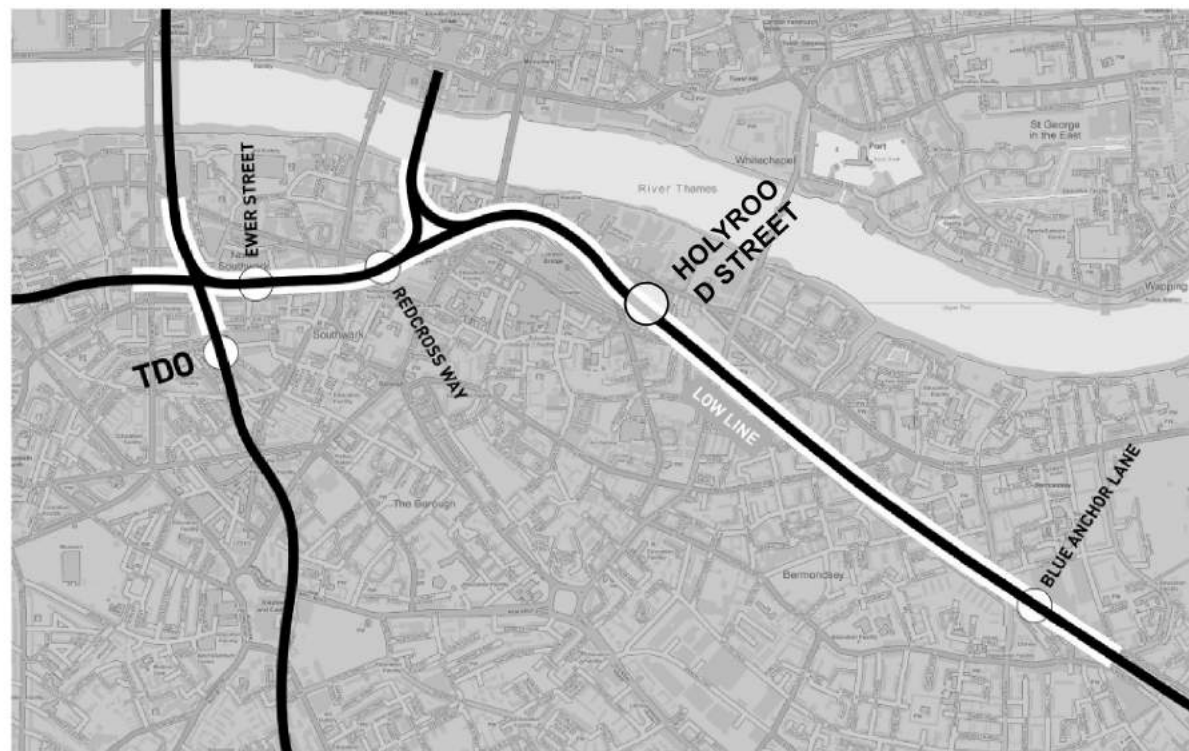
CAMDEN
TOWN
UNLIMITED

Better
Bankside

CROSS RIVER
PARTNERSHIP
Delivering London's Future Together

SUPPORTED BY
MAYOR OF LONDON

Department
for Environment
Food & Rural Affairs



_Low_Line

CAMDEN
TOWN
UNLIMITED

Better
Bankside

 CROSS RIVER
PARTNERSHIP
Delivering London's Future Together

SUPPORTED BY
MAYOR OF LONDON


Department
for Environment
Food & Rural Affairs



_Low_Line

CAMDEN
TOWN
UNLIMITED

Better
Bankside

 CROSS RIVER
PARTNERSHIP
Delivering London's Future Together

SUPPORTED BY
MAYOR OF LONDON


Department
for Environment
Food & Rural Affairs



_Low_Line

CAMDEN
TOWN
UNLIMITED

Better
Bankside

 **CROSS RIVER
PARTNERSHIP**
Delivering London's Future Together

SUPPORTED BY
MAYOR OF LONDON


Department
for Environment
Food & Rural Affairs



_Low_Line

CAMDEN
TOWN
UNLIMITED

Better
Bankside

 **CROSS RIVER
PARTNERSHIP**
Delivering London's Future Together

SUPPORTED BY
MAYOR OF LONDON


Department
for Environment
Food & Rural Affairs



_Low_Line

CAMDEN
TOWN
UNLIMITED

Better
Bankside

 **CROSS RIVER
PARTNERSHIP**
Delivering London's Future Together

SUPPORTED BY
MAYOR OF LONDON


Department
for Environment
Food & Rural Affairs



_Low_Line

CAMDEN
TOWN
UNLIMITED

**Better
Bankside**

 **CROSS RIVER
PARTNERSHIP**
Delivering London's Future Together

SUPPORTED BY
MAYOR OF LONDON


Department
for Environment
Food & Rural Affairs



_Low_Line

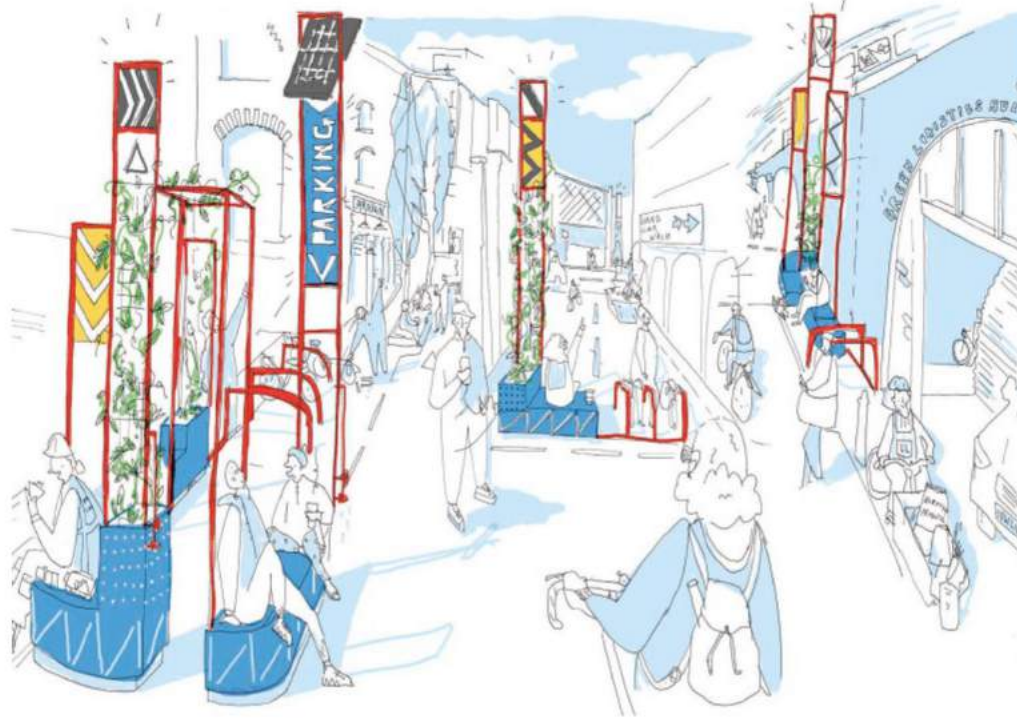
CAMDEN
TOWN
UNLIMITED

Better
Bankside

 CROSS RIVER
PARTNERSHIP
Delivering London's Future Together

SUPPORTED BY
MAYOR OF LONDON


Department
for Environment
Food & Rural Affairs



_Low_Line

CAMDEN
TOWN
UNLIMITED

Better
Bankside

 CROSS RIVER
PARTNERSHIP
Delivering London's Future Together

SUPPORTED BY
MAYOR OF LONDON


Department
for Environment
Food & Rural Affairs

Q&A Session

Further thoughts on future potential uses of urban railway infrastructure.



CAMDEN
TOWN
UNLIMITED

**Better
Bankside**

 **CROSS RIVER
PARTNERSHIP**
Delivering London's Future Together

SUPPORTED BY
MAYOR OF LONDON


Department
for Environment
Food & Rural Affairs

CRP and Rail Freight

Joshua West

Cross River Partnership



Rail Freight in the UK

How much does rail freight contribute to the UK economy?

- A. £100 million
- B. £550 million
- C. £1.7 billion



<http://www.rfg.org.uk/rail-freight/facts-figures/>

CAMDEN
TOWN
UNLIMITED

Better
Bankside

 CROSS RIVER
PARTNERSHIP
Delivering London's Future Together

SUPPORTED BY
MAYOR OF LONDON


Department
for Environment
Food & Rural Affairs

Rail Freight in the UK

How much does rail freight contribute to the UK economy?

- A. £100 million
- B. £550 million
- C. £1.7 billion**

<http://www.rfg.org.uk/rail-freight/facts-figures/>



CAMDEN
TOWN
UNLIMITED

Better
Bankside

 CROSS RIVER
PARTNERSHIP
Delivering London's Future Together

SUPPORTED BY
MAYOR OF LONDON


Department
for Environment
Food & Rural Affairs

Rail Freight in the UK

Each freight train takes approximately how many HGVs off the road?

- A. 10
- B. 38
- C. 76

<http://www.rfg.org.uk/rail-freight/facts-figures/>



Rail Freight in the UK

Each freight train takes approximately how many HGVs off the road?

- A. 10
- B. 38
- C. 76**

<http://www.rfg.org.uk/rail-freight/facts-figures/>



Rail Freight in the UK

How much freight was moved in Great Britain in 2020-21?

- A. 3 billion net tonne kilometers
- B. 9 billion net tonne kilometers
- C. 15 billion net tonne kilometers



<https://dataportal.orr.gov.uk/statistics/usage/freight-rail-usage-and-performance/>

CAMDEN
TOWN
UNLIMITED

Better
Bankside

 CROSS RIVER
PARTNERSHIP
Delivering London's Future Together

SUPPORTED BY
MAYOR OF LONDON


Department
for Environment
Food & Rural Affairs

Rail Freight in the UK

How much freight was moved in Great Britain in 2020-21?

- A. 3 billion net tonne kilometers
- B. 9 billion net tonne kilometers
- C. 15 billion net tonne kilometers**



<https://dataportal.orr.gov.uk/statistics/usage/freight-rail-usage-and-performance/>

CAMDEN
TOWN
UNLIMITED

Better
Bankside

 CROSS RIVER
PARTNERSHIP
Delivering London's Future Together

SUPPORTED BY
MAYOR OF LONDON


Department
for Environment
Food & Rural Affairs

Impact of Covid on Rail Freight

- Network Rail allowed more freight trains to run
- Express 72-hour rail service transported essential hygiene, medical and food products
- In 2020, China-Europe freight trains transported **1.13 million containers**, including **9.39 million items of medical equipment**
National Development and Reform Commission
- Flexibility, resilience and efficiency in the face of the pandemic

<https://www.globalrailwayreview.com/article/117293/uk-rail-freight-covid-pandemic/>



Why the focus on rail freight in London?

- Almost all of London's freight is currently carried by road, using mainly diesel vehicles.
https://www.london.gov.uk/sites/default/files/london_environment_strategy_0.pdf
- Increased traffic congestion on roads. Traffic back to pre-pandemic levels.
- London population 9 million as of 2020.
- Strengthening of vehicle restrictions in densely populated areas e.g. Mayor's ULEZ expansion and LEZ.
- Rail more fuel efficient than road haulage and is responsible for 76% less carbon dioxide per tonne of cargo.
<https://www.networkrail.co.uk/wp-content/uploads/2021/05/London-Rail-Freight-Strategy-Summary-Report.pdf>



What is transported by rail freight across London?



CAMDEN
TOWN
UNLIMITED

Better
Bankside

 CROSS RIVER
PARTNERSHIP
Delivering London's Future Together

SUPPORTED BY
MAYOR OF LONDON


Department
for Environment
Food & Rural Affairs

What are the challenges ahead?

- Very strong long-term growth in demand for rail freight services expected between now and 2043
- Lack of rail-connected facilities within the consumer goods supply chain
- Network capacity
- Network capability
- Availability of suitable terminals and yards
- Funding



London Rail Freight Strategy Summary Report - <https://www.networkrail.co.uk/wp-content/uploads/2021/05/London-Rail-Freight-Strategy-Summary-Report.pdf>

CAMDEN
TOWN
UNLIMITED

Better
Bankside

CROSS RIVER
PARTNERSHIP
Delivering London's Future Together

SUPPORTED BY
MAYOR OF LONDON


Department
for Environment
Food & Rural Affairs

The CAV4 Rail Freight Focus

London-focussed feasibility study

- Researching opportunities for Light Rail
- Links with road, river and other modes



Q&A Session

Further thoughts on future potential uses of urban railway infrastructure.



CAMDEN
TOWN
UNLIMITED

**Better
Bankside**

 **CROSS RIVER
PARTNERSHIP**
Delivering London's Future Together

SUPPORTED BY
MAYOR OF LONDON


Department
for Environment
Food & Rural Affairs

Sign up to our next event!



CRP Lunchtime Launch 8
The Future of Sustainable Shipping and
Trade in London

Thursday 19th August 2021
1:15pm – 2pm

<https://www.eventbrite.co.uk/e/the-future-of-sustainable-shipping-trade-tickets-165138683247>

CAMDEN
TOWN
UNLIMITED

Better
Bankside

 **CROSS RIVER
PARTNERSHIP**
Delivering London's Future Together

SUPPORTED BY
MAYOR OF LONDON


Department
for Environment
Food & Rural Affairs

Thank You



Hasanul Hoque
Operations Manager
Camden Town Unlimited
Hasanul@camdentownunlimited.com



Valerie Beirne
Bankside Urban Forest Manager
Better Bankside
vb@betterbankside.co.uk



Rachael Aldridge
Project Officer
Cross River Partnership
rachaelaldridge@crossriverpartnership.org



Joshua West
Communications and Business Development Manager
Cross River Partnership
joshuawest@crossriverpartnership.org



www.crossriverpartnership.org



@CrossRiverPartnership



@CrossRiverPship



Cross River Partnership



linkedin.com/company/cross-river-partnership/



www.crossriverpartnership.org/newsletter



Search 'Cross River Partnership' on YouTube

CAMDEN
TOWN
UNLIMITED

Better
Bankside

CROSS RIVER
PARTNERSHIP
Delivering London's Future Together

SUPPORTED BY
MAYOR OF LONDON


Department
for Environment
Food & Rural Affairs