

# CRP's Lunchtime Launch: Making Monitoring Meaningful



**Thursday 25<sup>th</sup> February 2021**

**1:15pm – 2pm**

# Today's Speakers



Mariana Barrios Cabrera  
Vivacity Labs

**Speaker**



Susannah Wilks  
Director  
Cross River Partnership

**Chair**



Abby McDougall  
Technical Project Officer  
Cross River Partnership

**Speaker**



Fiona Coull  
Project Manager  
Cross River Partnership

**Speaker**



Stav Friedman  
Project Officer  
Cross River Partnership

**Chat Moderator**



Joshua West  
Communications & Business  
Development Manager  
Cross River Partnership

**Technical Lead**



# Today's Agenda

1.  
Introduction  
to CRP

2. Making  
Monitoring  
Meaningful

3. Vivacity  
Labs

4. CRP and  
Data Analysis

**Have your say:**  
Q/A session at the end of all the  
presentations



# Introduction and Context

Susannah Wilks, CRP



# Our Vision

## People

Work with engaged people, connecting stakeholders to successfully collaborate and deliver

## Places

Deliver great places, sharing best practice whilst ensuring all businesses are supported to grow sustainably

## Projects

Deliver innovative projects for partners encouraging businesses to shift from incremental to permanent change, whilst inspiring others to do more at pace

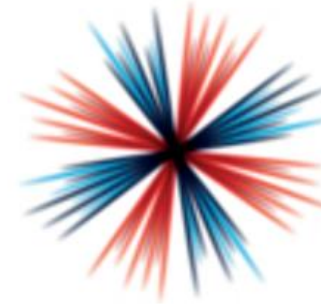


**Working towards sustainable businesses and improving air quality.**

# CRP's Major Funders



Department  
for Environment  
Food & Rural Affairs



**INDUSTRIAL  
STRATEGY**

**MAYOR OF LONDON**



**Transport  
for London**



**CROSS RIVER  
PARTNERSHIP**

Delivering London's Future Together



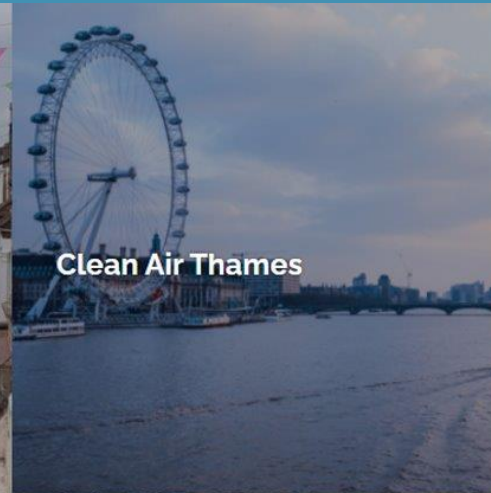
# CRP Projects



Clean Air Villages 3



Healthy Streets Everyday



Clean Air Thames



Central London Sub-Regional Transport Partnership



EV Fleet-Centred Local Energy System (EFLES)



Town Centre Futures



Chelsea 2030 - Cadogan 10-Year Stewardship Strategy



Lighting London Sustainably

# Making Monitoring Meaningful

Abby McDougall, CRP





# How has transport planning changed?





# Accelerated



# Ambitious





# Experimental



# Low traffic zones 'force cars into streets where poorer people live'



Evering Road has recently become part of the Hackney Downs LTN and has had bollards put in the middle to prevent through traffic

RICK FINDLER FOR THE TIMES

Despite a loud opposing minority, low-traffic neighbourhoods are increasingly popular

*Peter Walker*

YouGov poll found positive views on LTNs are three times higher than negative ones



▲ The Oval Triangle low traffic neighbourhood in Lambeth, London. Photograph: Tom Wall/The Observer

# Controversial

# Why is monitoring important?

# Why is monitoring important?



Proof of concept



Identify problems or concerns

# Why is monitoring important?



Proof of concept



Identify problems or concerns



Create an open conversation



Build trust and confidence



Support the transition to becoming permanent





Personal air quality monitoring



Citizen science study at King's College Hospital



Traffic monitoring in Soho using Vivacity sensors



# Clean Air Routes

Direct route

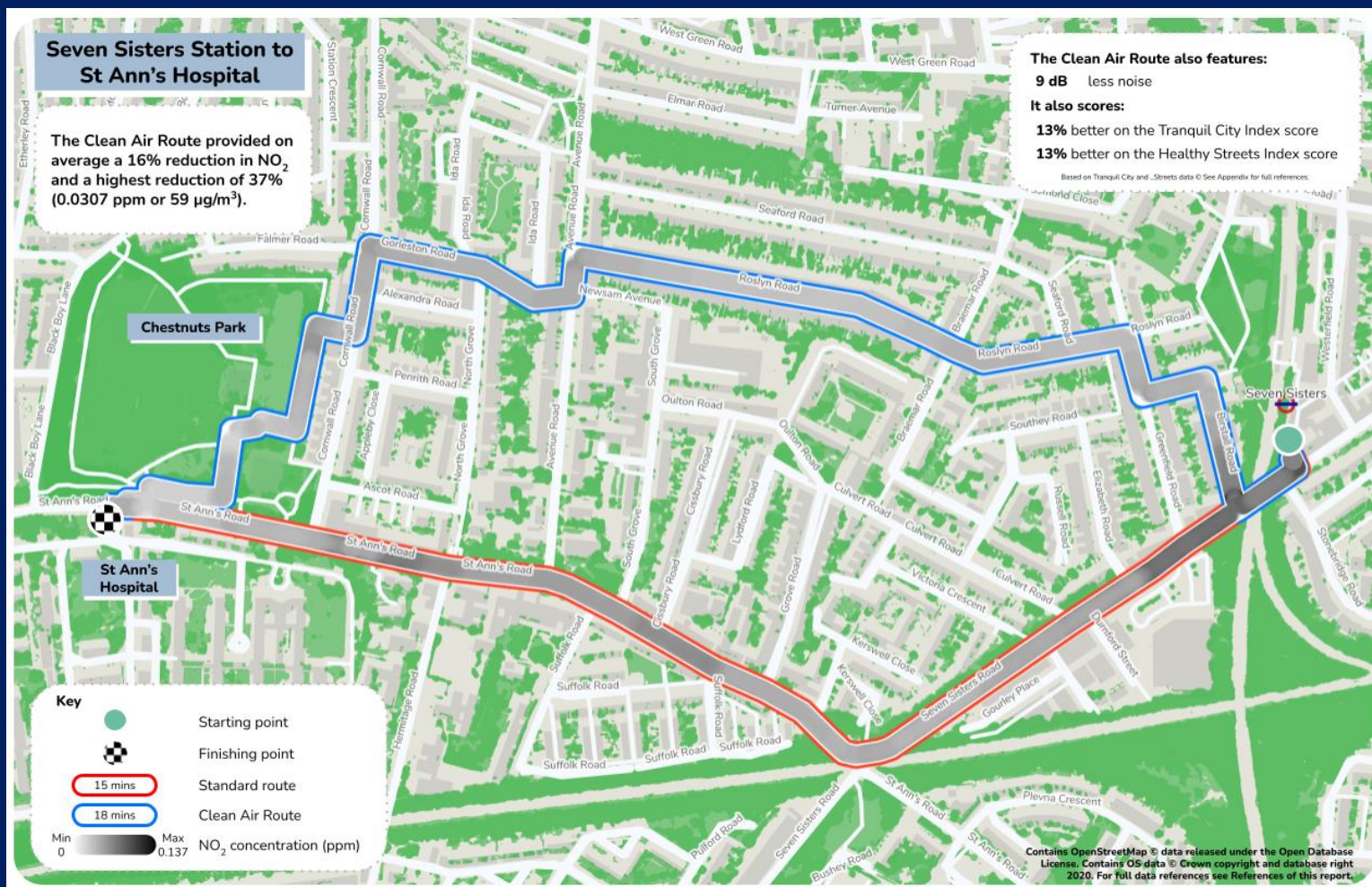


Clean route





Average exposure to nitrogen dioxide was between 6% and 23% lower on the Clean Air Routes, with a **maximum reduction of up to 41%**





# The final report is now available to view online:

[crossriverpartnership.org/wp-content/uploads/2020/03/Clean-Air-Routes-Monitoring-Report-FINAL-2021-min.pdf](https://crossriverpartnership.org/wp-content/uploads/2020/03/Clean-Air-Routes-Monitoring-Report-FINAL-2021-min.pdf)

## 1. Introduction

### 1.1 Cross River Partnership

Cross River Partnership (CRP) is a public-private partnership working with 10 London boroughs, 17 private sector partners and 6 strategic agencies to deliver innovative projects that contribute to the social, environmental and economic health of London.

### 1.2 Clean Air Villages

The **Clean Air Villages 3 (CAV3)** project is being delivered on behalf of 16 partners, including 12 Local Authorities and 4 Business Improvement Districts (BIDs) across London. Fig. 1.1 shows the 16 focus areas as part of this one-year project funded by the Defra Air Quality Grant. CRP is engaging with businesses, hospitals and wider communities to encourage behaviour change and support activities to reduce air pollution and congestion.

### 1.3 Clean Air Routes

In 2017, as part of the Clean Air Better Business (CABB) programme, CRP and partners identified and developed London's first on-street clean air walking routes. The purpose of a Clean Air Route is to encourage pedestrians to take quieter backstreets, thereby reducing their exposure to harmful air pollution. In August 2020, CRP commissioned Tranquil City to monitor pollution concentrations along 15 new routes as part of the CAV3 project. Initial routes were identified by CRP, with support from the CAV3 Local Authority and BID partners, shown beneath Fig. 1.1. It was agreed that an additional Clean Air Route would not be developed for Northbank BID to avoid duplicating existing and extensive work that has been carried out within the BID footprint.



Tranquil City 2020 ©

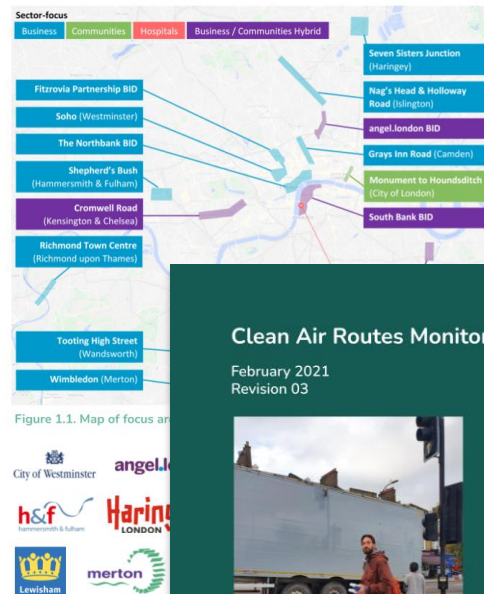


Figure 1.1. Map of focus areas

## Clean Air Routes Monitoring Report

February 2021  
Revision 03



Delivered as part of the Clean Air Villages 3 (CAV3) project, funded by the Defra Air Quality Grant.



## 2. Methodology

Table 2.1. Summary of monitoring conditions for each route survey conducted.

No.	CAV3 Partner	Date	Location (short title)	Time	Temperature (°C)	Cloud level	Wind (kph, direction)	Adjustment Factor
1	Angel.London	14/10/20	Angel	Morning	9	Partly	14, NE	NA
2	London Borough of Lambeth	6/10/20	Camberwell	Evening	15	Cloudy	25, W	NA
3	City of London Corporation	20/10/20	City of London	Morning	13	Cloudy	19, S	0.88
4	Royal Borough of Kensington & Chelsea	15/10/20	Cromwell Road	Evening	13	Cloudy	16, NNE	NA
5	London Borough of Lewisham	13/10/20	Deptford	Morning	8	Partly	11, NW	NA
6	The Fitzrovia Partnership	21/10/20	Fitzrovia	Evening	15	Cloudy	24, W	0.54
7	Great Ormond Street Hospital		Great Ormond Street Hospital	Morning	11	Partly	20, WSW	NA
8	Holloway Road		Holloway Road	Evening	18	Cloudy	22, SSW	0.85
9	Richmond		Richmond	Morning	10	Partly	9, W	NA
10	Seven Sisters		Seven Sisters	Evening	12	Cloudy	19, NE	NA
11	Shepherd's Bush		Shepherd's Bush	Morning	13	Partly	17, SW	0.69
12	Soho		Soho	Morning	8	Partly	14, NNE	1.09
13	South Bank		South Bank	Evening	13	Clear	10, WNW	1.32
14	Tooting		Tooting	Morning	9	Partly	16, W	NA
15	Wimbledon		Wimbledon	Evening	15	Partly	18, W	NA

Tranquil City 2020 ©

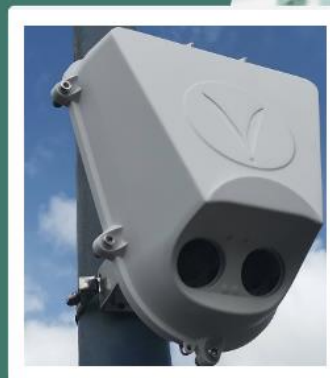
January 2021



# Introduction to Vivacity Labs

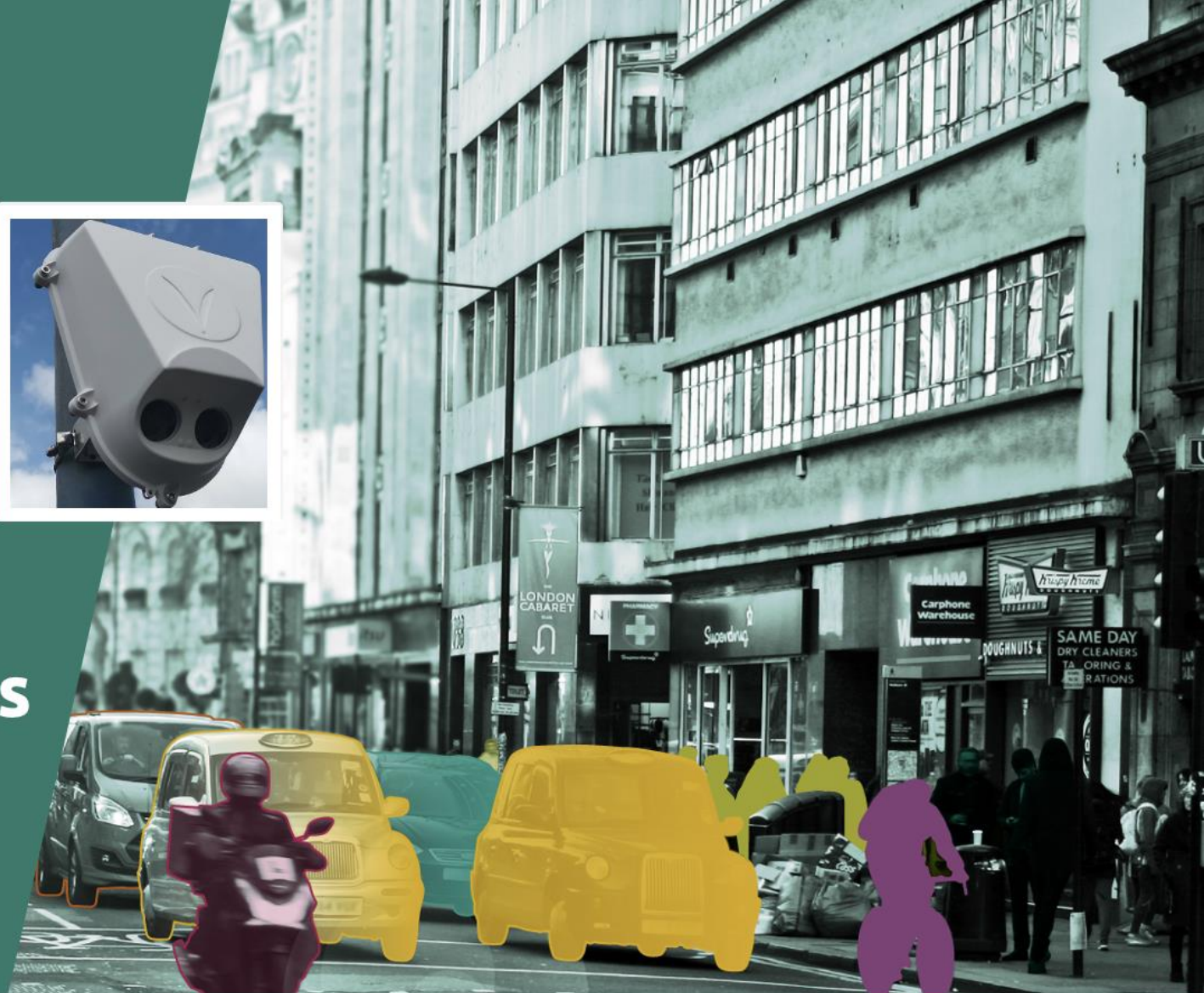
Mariana Barrios Cabrera, Vivacity Labs





## Introduction to Vivacity Labs

[www.vivacitylabs.com](http://www.vivacitylabs.com)



WSJ

  
THE TIMES

BBC  
RADIO

4

BBC  
RADIO

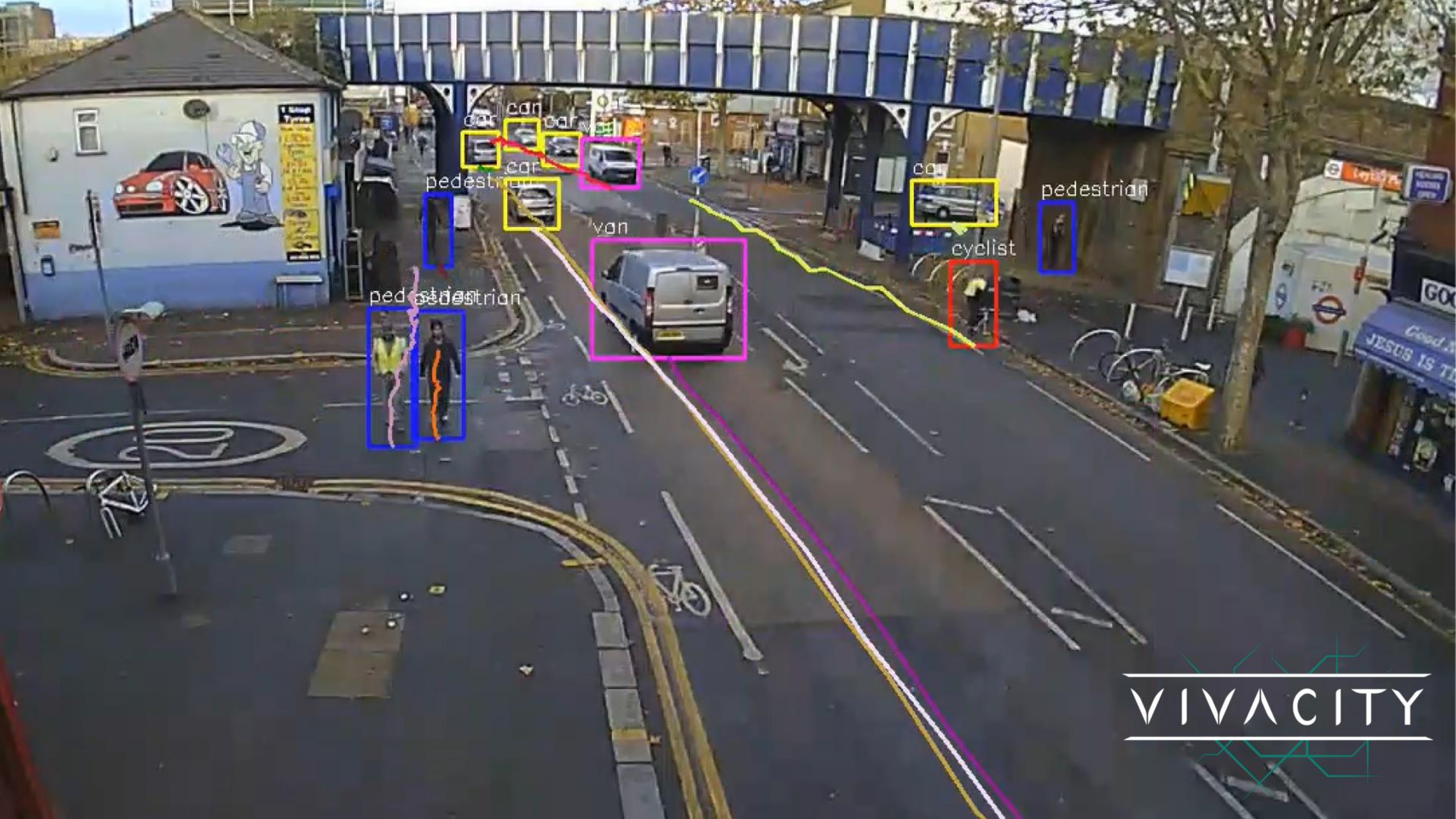
5 live

The Telegraph

THE  
Sun

London  
Evening  
Standard





car

car

car

pedestrian

car

van

car

pedestrian

pedestrian

van

cyclist

pedestrian

pedestrian

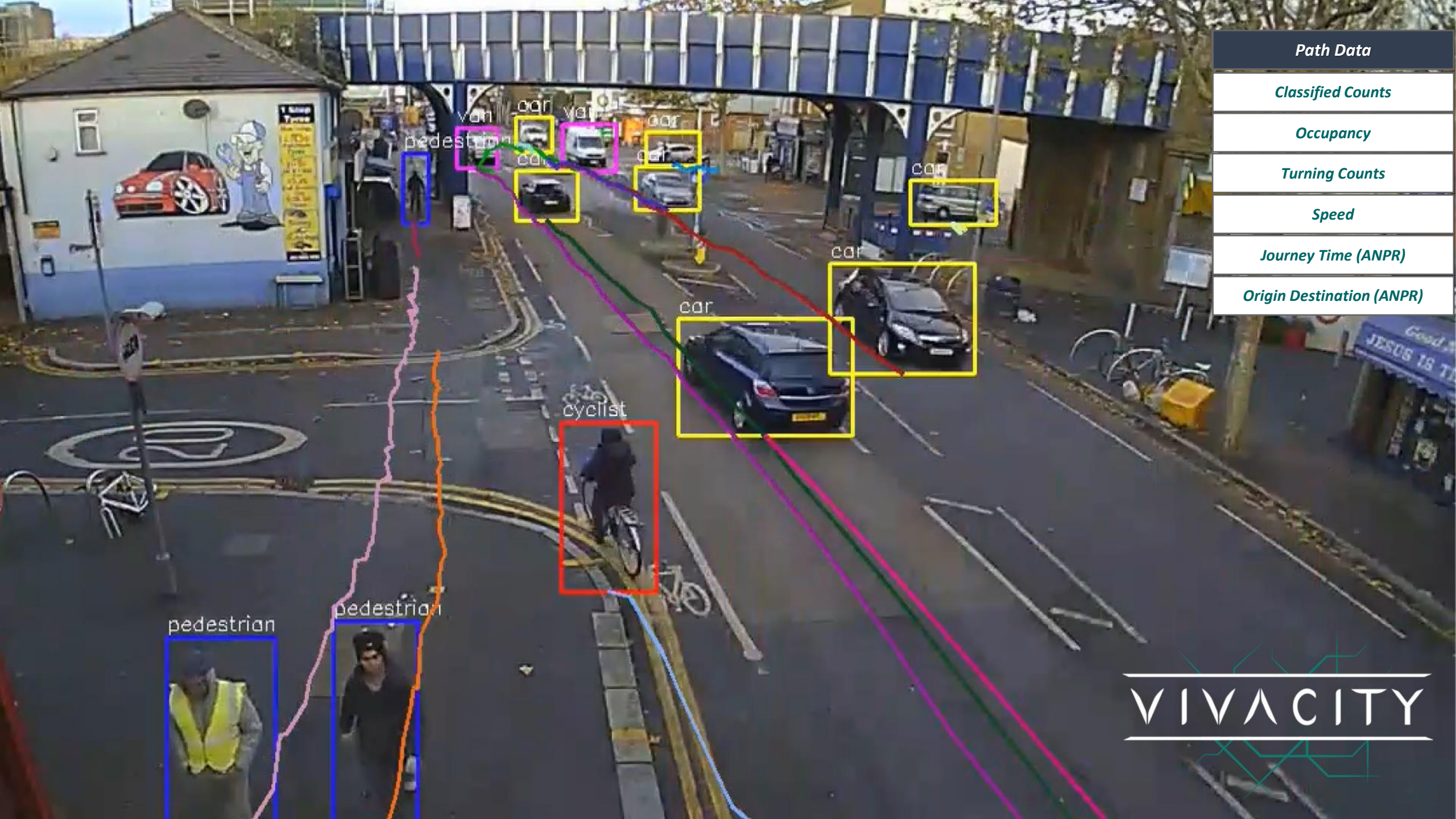
van

cyclist

pedestrian

VIVACITY





Path Data

Classified Counts

Occupancy

Turning Counts

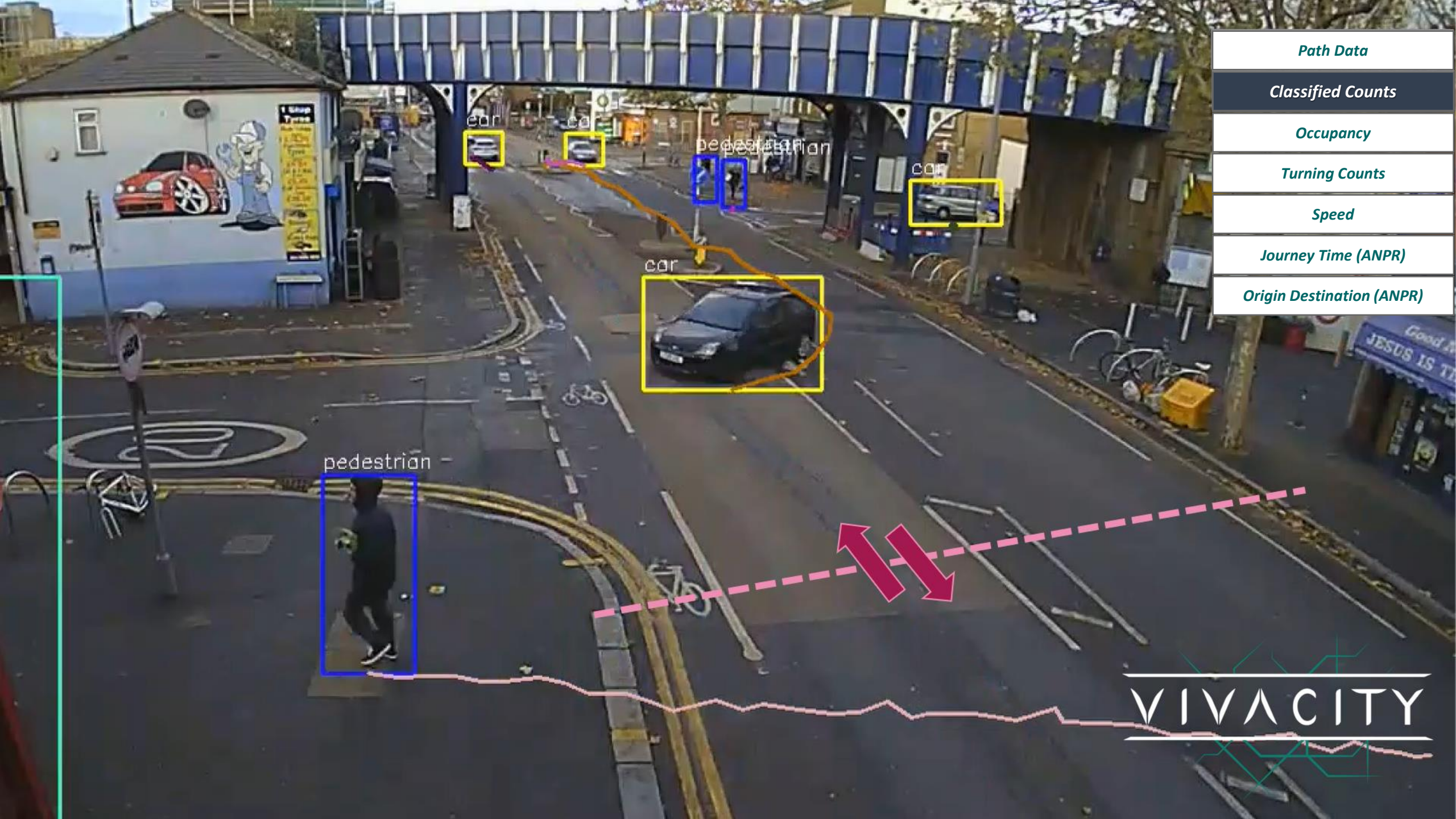
Speed

Journey Time (ANPR)

Origin Destination (ANPR)

VIVACITY

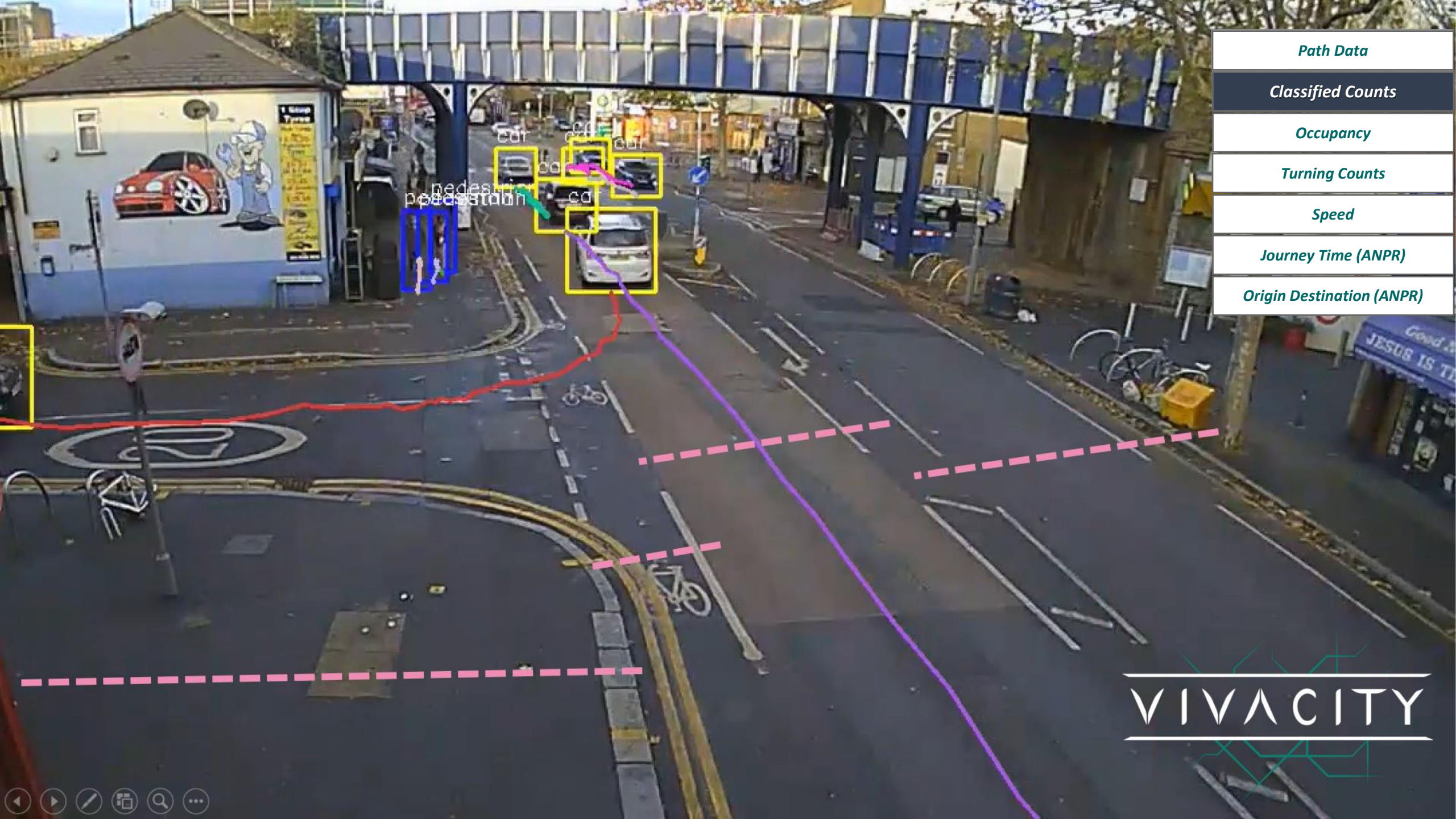




Path Data
Classified Counts
Occupancy
Turning Counts
Speed
Journey Time (ANPR)
Origin Destination (ANPR)

VIVACITY

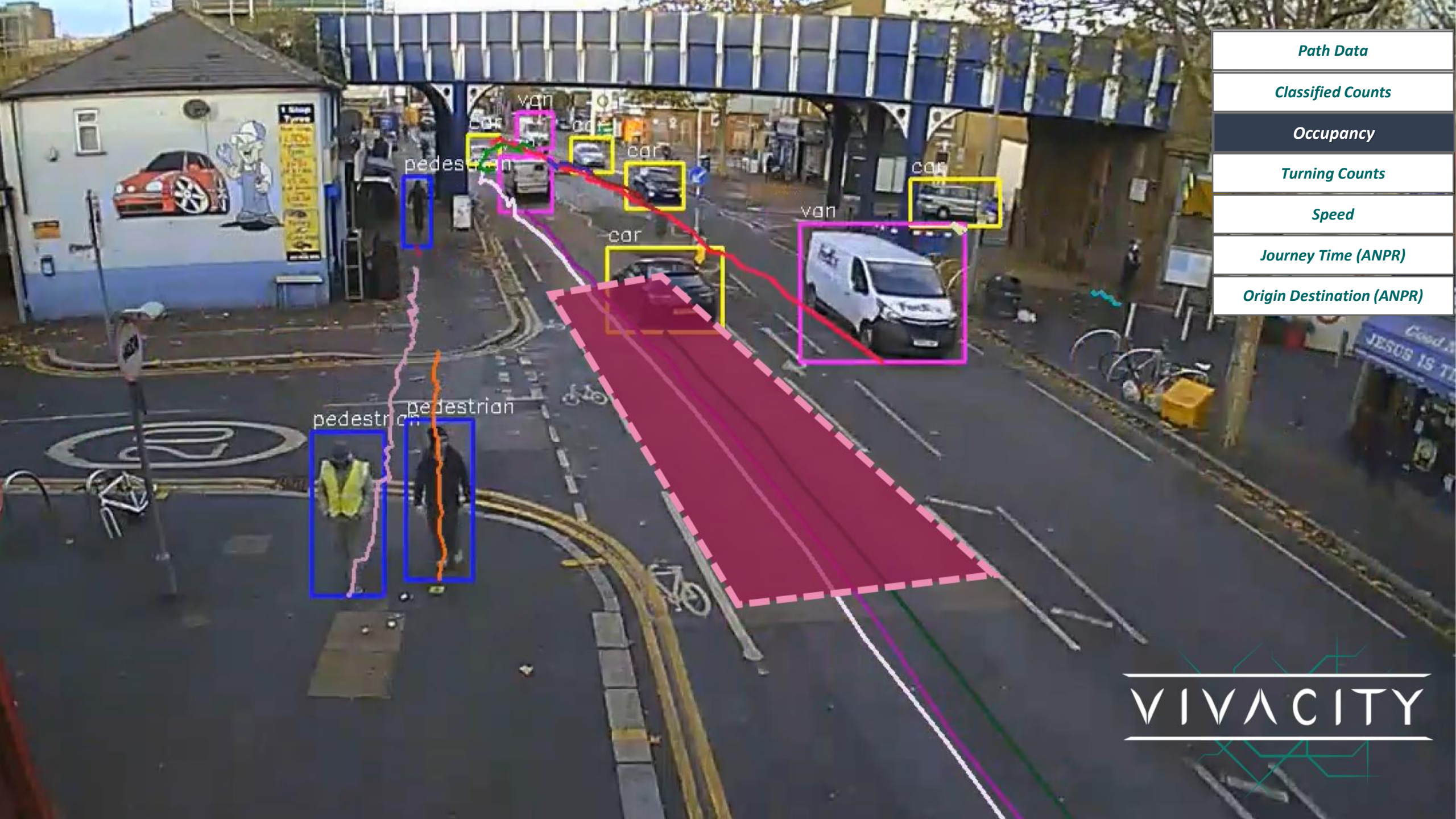




Path Data
Classified Counts
Occupancy
Turning Counts
Speed
Journey Time (ANPR)
Origin Destination (ANPR)

VIVACITY

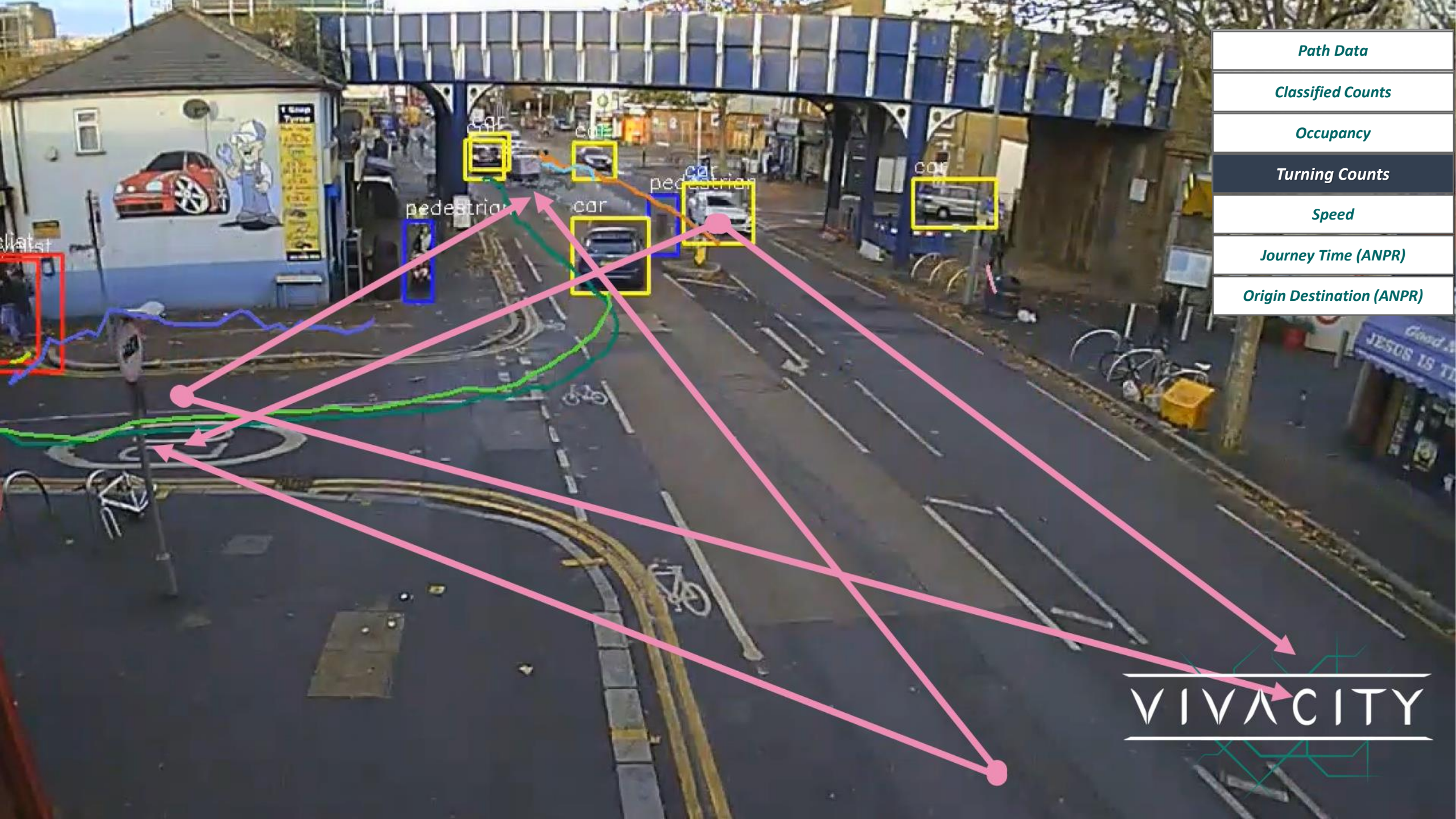




Path Data
Classified Counts
Occupancy
Turning Counts
Speed
Journey Time (ANPR)
Origin Destination (ANPR)

VIVACITY

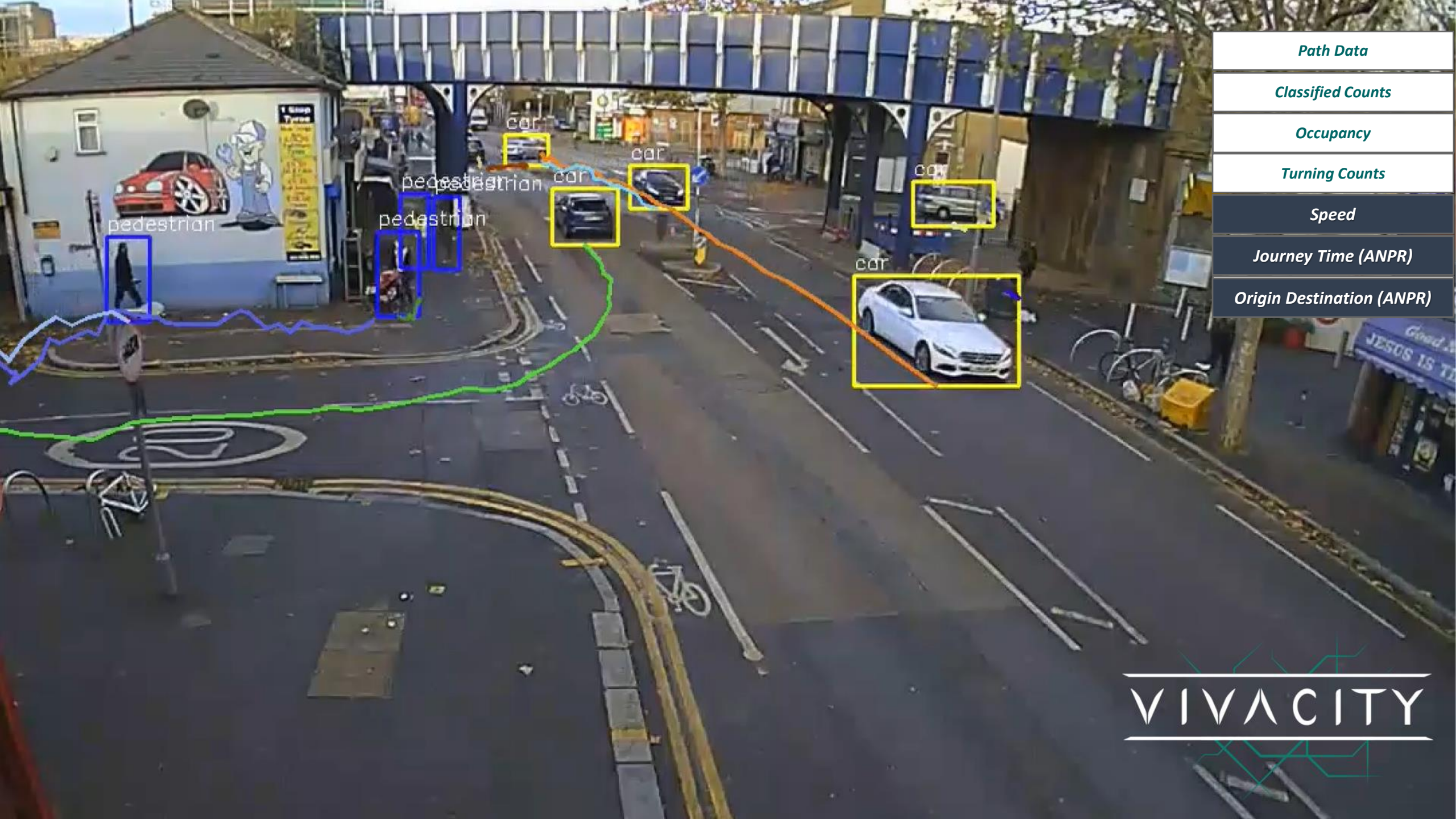




Path Data
Classified Counts
Occupancy
Turning Counts
Speed
Journey Time (ANPR)
Origin Destination (ANPR)

VIVACITY





Path Data
Classified Counts
Occupancy
Turning Counts
Speed
Journey Time (ANPR)
Origin Destination (ANPR)

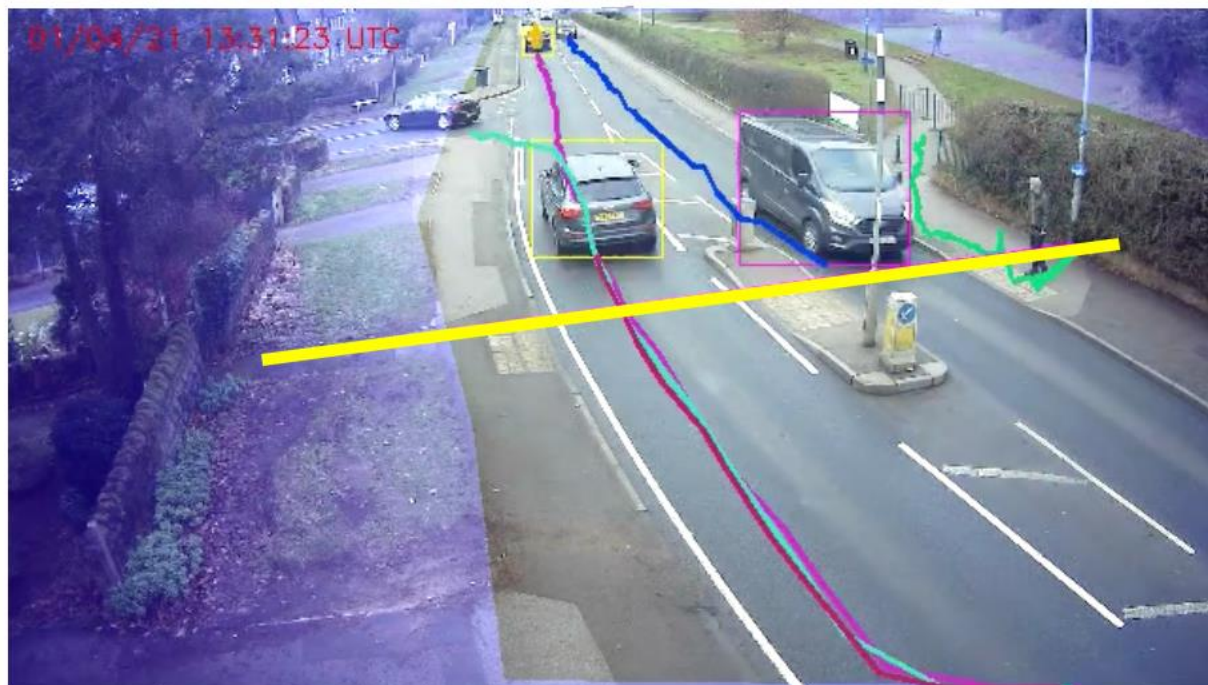
VIVACITY



# Two Lenses from one single sensor

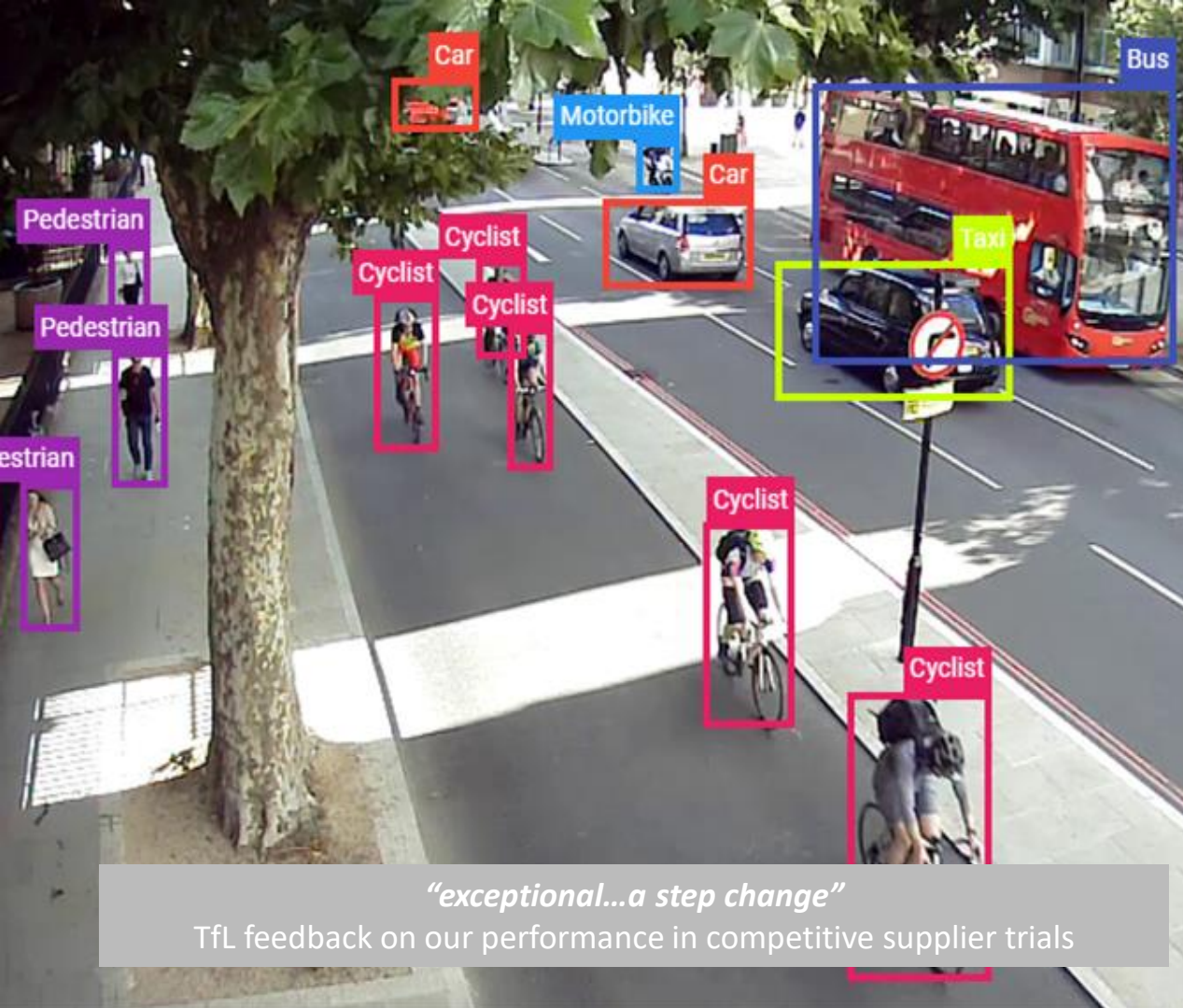


Standard Features



Journey Time (ANPR)





# Classification & Counting

Providing real-time, on-device counting & classification, using the same algorithms as in driverless vehicles.

**97%**

accuracy validated by TfL vs. human counting  
TfL are now rolling out at scale, as **no other technology** can provide our level of insight.

**9**

classifications, including pedestrian, cyclist, motorbike, car, taxi, LGV (van), PSV (bus), OGV1 (rigid HGVs) and OGV2 (articulates)

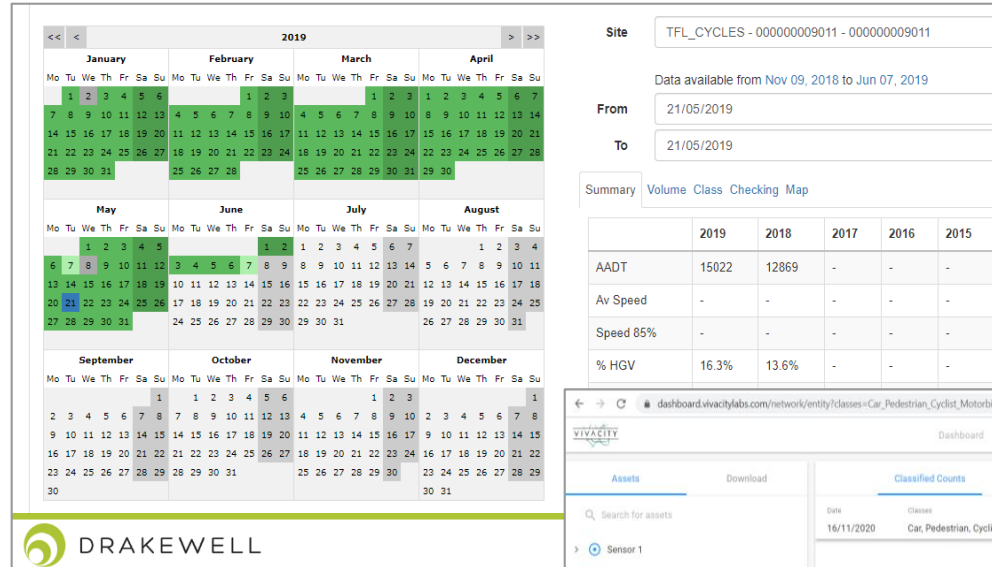




# Accessing the Data

The sensor data can be accessed in three different ways:

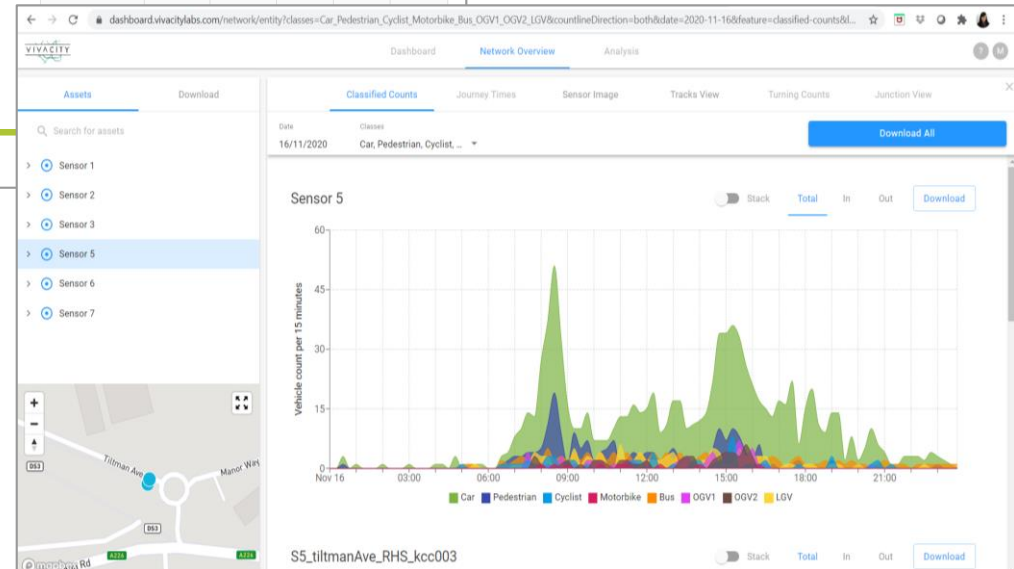
- Through Vivacity's Dashboard (classified counts, path data, turning counts and image space)
- Through an API (classified counts)
- Through integration with 3<sup>rd</sup> party systems (classified counts)



**Dashboard**  
Classified count can be downloaded

## APIs

already integrated with common interfaces, including C2, Cloud Amber, Stratos, & Dynniq  
Image copyright Drakewell



# CRP and Data Analysis

Fiona Coull, CRP



**CROSS RIVER  
PARTNERSHIP**

**Delivering London's Future Together**



# CRP Vivacity Monitoring Project





- Identify strengths / weaknesses in network.
- Air quality data inferred using CRP's in house MeasureBEST tool.
- Data processed for you with in depth analysis of trends and individual reports to inform decisions and stakeholders.
- Measure impacts of Streetspace interventions.
- Ability to monitor pedestrian interactions.
- Can be tailored to your needs and provides proof of concept /robust guidance.






# CRP Vivacity Monitoring - Locations

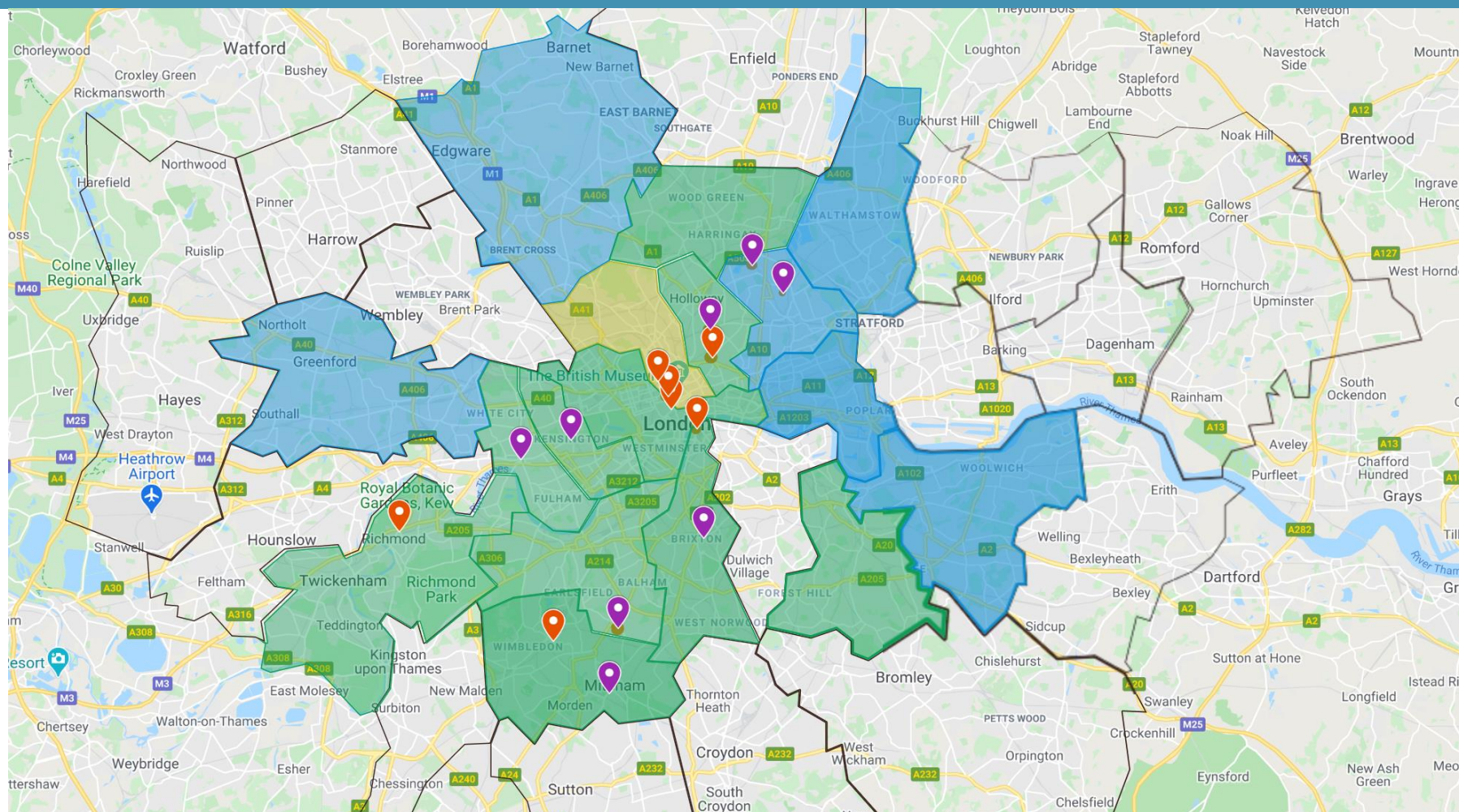
## Vivacity Monitoring Locations

-  Healthy Streets Everyday
-  Clean Air Villages

## Borough Partners

-  Healthy Streets Everyday
-  Clean Air Villages
-  Clean Air Villages & Healthy Streets Everyday

**16 sensors have been installed in Boroughs across London**

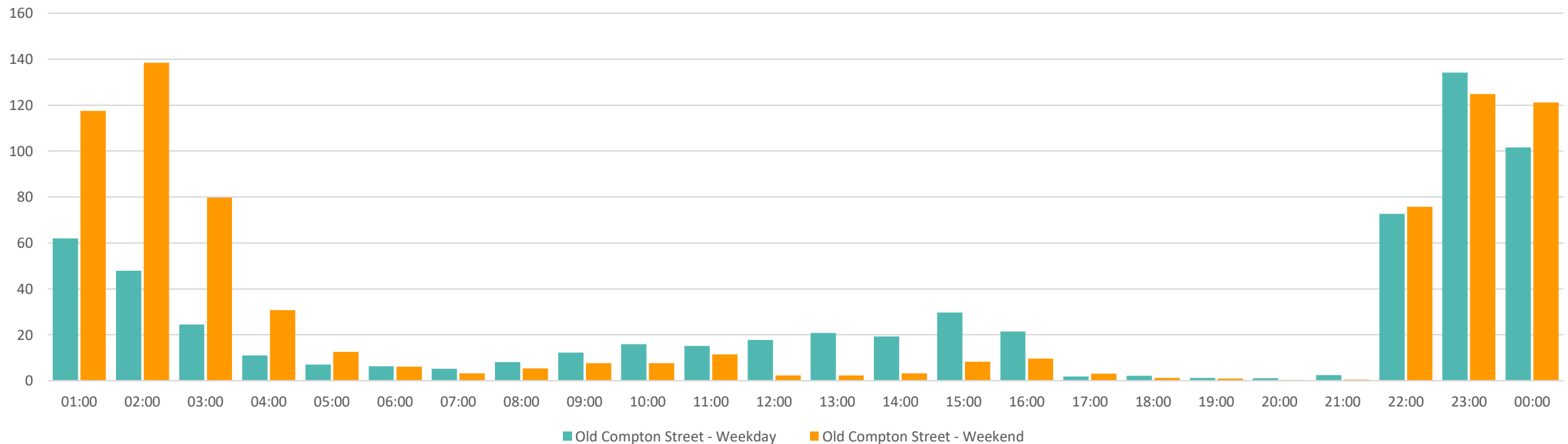




# CRP Vivacity Monitoring – Impact of Al Fresco Dining

Old Compton Street and Dean Street, Soho  
Complete Monitoring Period (27/08/20 – 31/10/20)

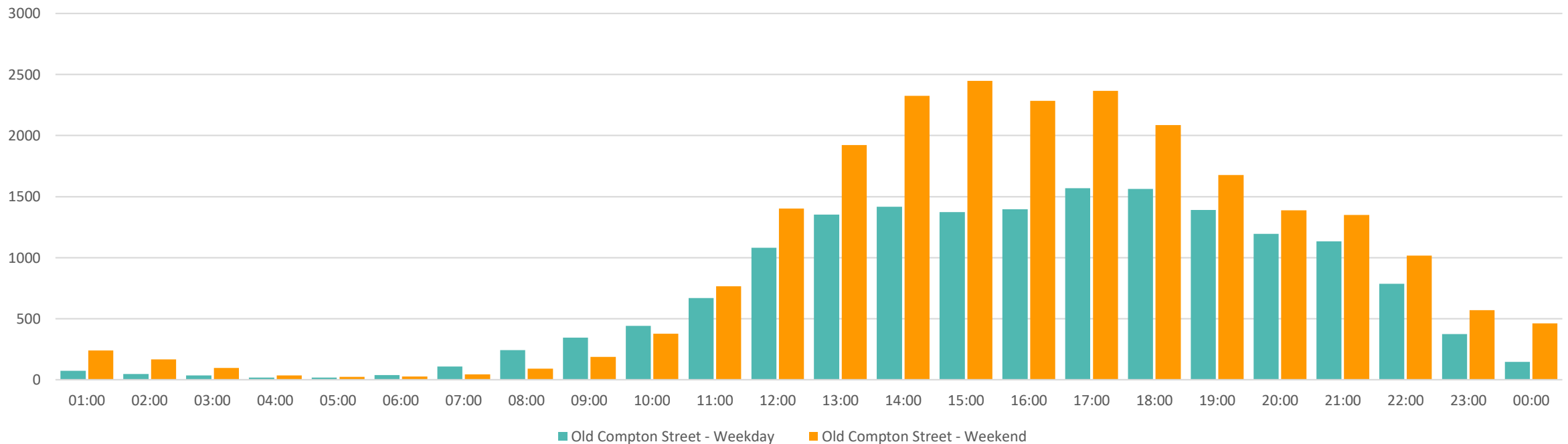
Cars (Hourly averages)



# CRP Vivacity Monitoring – Impact of Al Fresco Dining

## Old Compton Street and Dean Street, Soho Complete Monitoring Period (27/08/20 – 31/10/20)

Pedestrians (Hourly averages)

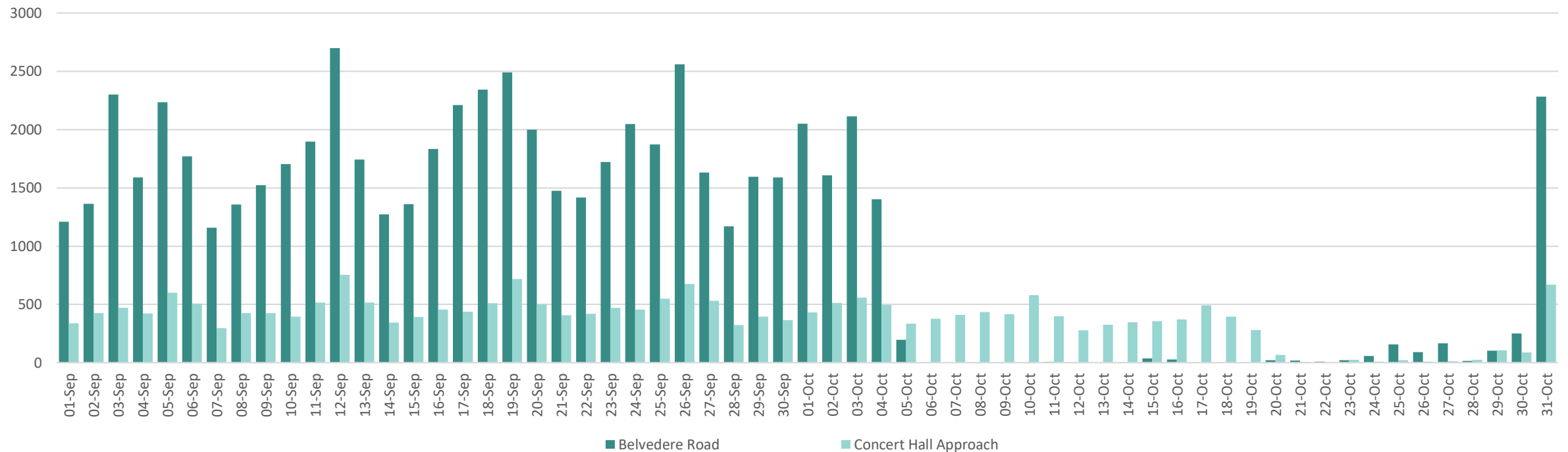




# CRP Vivacity Monitoring – Roadworks

## Belvedere Road and Concert Hall Approach, South Bank Complete Monitoring Period (01/09/20 – 31/10/20)

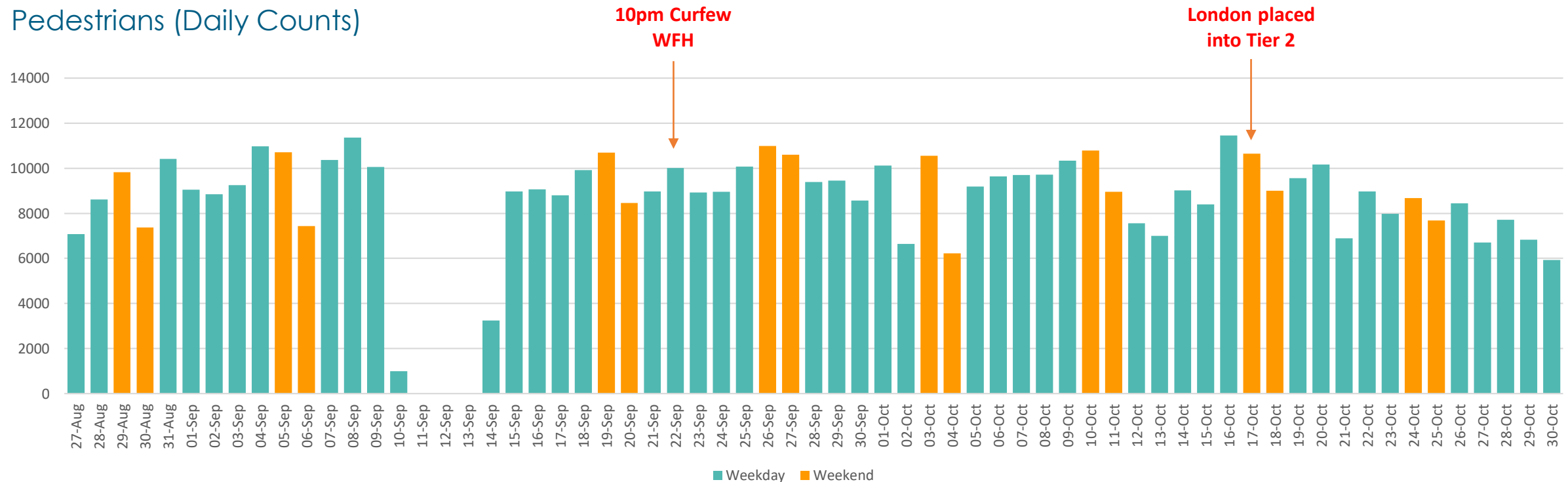
### Cars (Daily Counts)



# CRP Vivacity Monitoring – Impact of Restrictions

## Mitcham Road, Tooting Complete Monitoring Period (27/08/20 – 30/10/20)

### Pedestrians (Daily Counts)

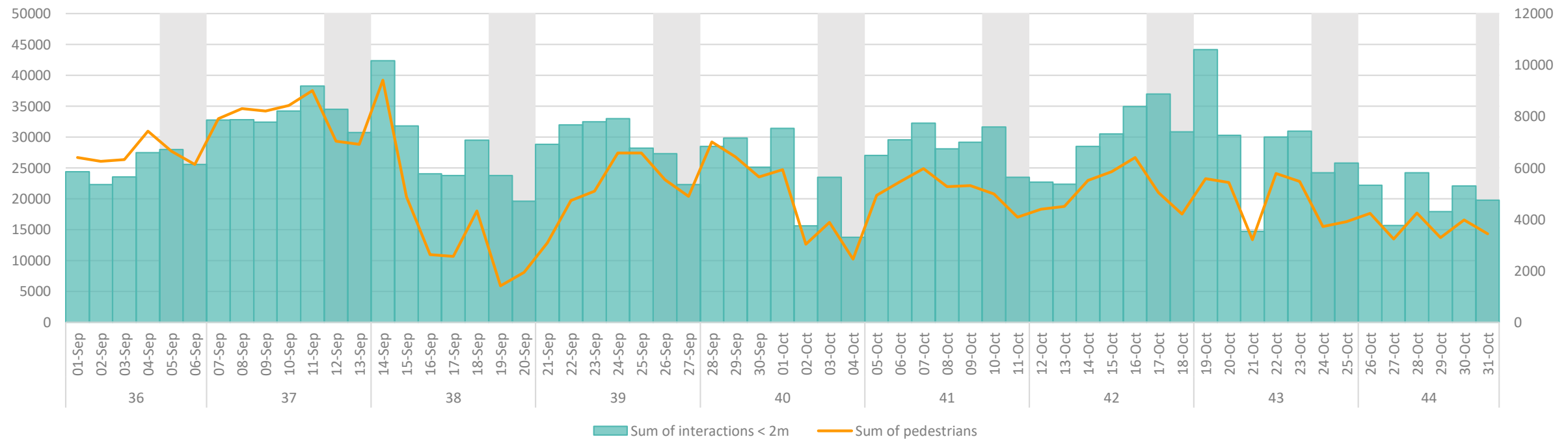




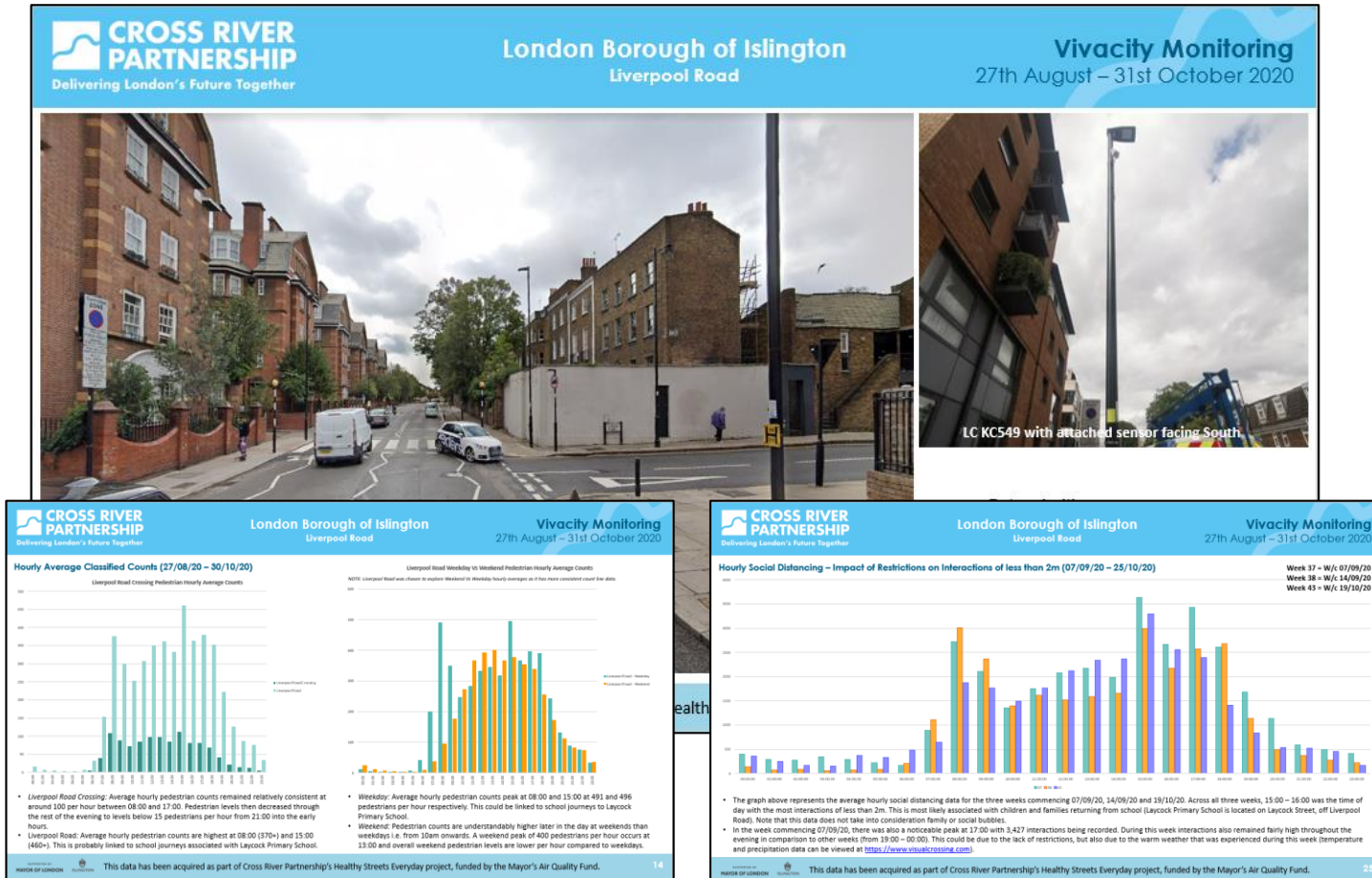
# CRP Vivacity Monitoring – Pedestrian Interactions

## Liverpool Road, Angel Complete Monitoring Period (01/09/20 – 31/10/20)

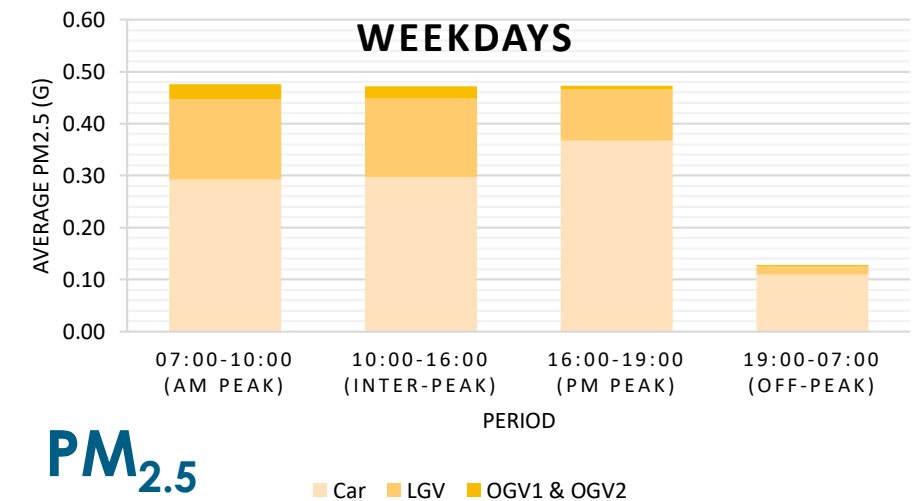
Pedestrian interactions of less than 2m (social distancing)



# CRP's Data Analysis Services



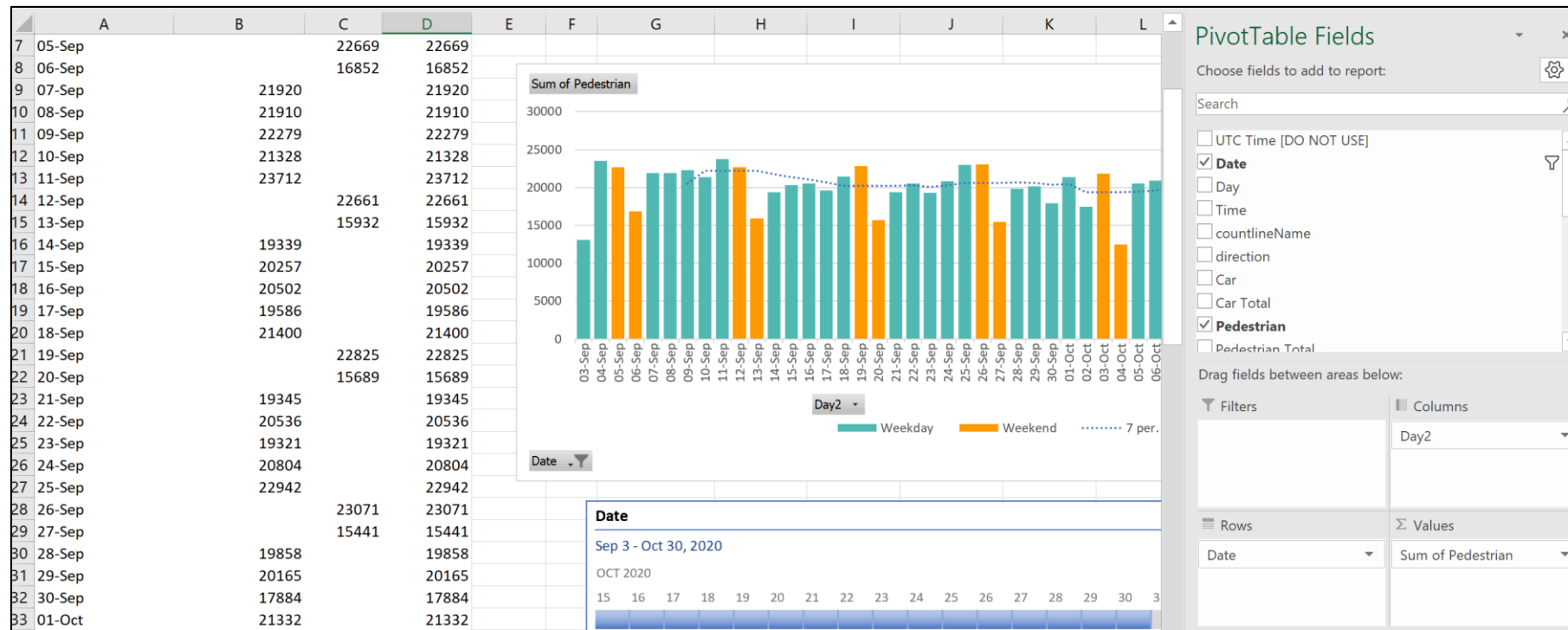
- CRP can provide data analysis services and provide individual reports tailored to your needs.
- CRP's in house tool can help understand local emissions associated with classified count data for even richer analysis.





# Get in Touch!

If you would like to understand more about how CRP can help you to unlock the full potential of your data by providing detailed analysis and additional insights please get in touch!



# Q&A Session







# **Sign up to our next event!**

CRP Lunchtime Launch 3:

Town Centre Futures

**Thursday 25<sup>th</sup> March**

**1:15pm – 2pm**



**CROSS RIVER  
PARTNERSHIP**

Delivering London's Future Together

# Thank You!



Mariana Barrios Cabrera  
Vivacity Labs  
[mariana.barrios@vivacitylabs.com](mailto:mariana.barrios@vivacitylabs.com)



Susannah Wilks  
Director  
Cross River Partnership  
[susannahwilks@crossriverpartnership.org](mailto:susannahwilks@crossriverpartnership.org)



Abby McDougall  
Technical Project Officer  
Cross River Partnership  
[abbymcdougall@crossriverpartnership.org](mailto:abbymcdougall@crossriverpartnership.org)



Fiona Coull  
Project Manager  
Cross River Partnership  
[fionacoull@crossriverpartnership.org](mailto:fionacoull@crossriverpartnership.org)



**[www.crossriverpartnership.org](http://www.crossriverpartnership.org)**



**Search 'Cross River Partnership' in YouTube**



**@CrossRiverPship**



**[linkedin.com/company/cross-river-partnership/](https://linkedin.com/company/cross-river-partnership/)**



**[www.crossriverpartnership.org/newsletter](http://www.crossriverpartnership.org/newsletter)**