

**Good Parks for London
2020 Report Launch
Parks and the Pandemic**

**Chair:
Tony Leach
CE, Parks for London**

"Investing in green space every day,
not just in times of crisis, is critical."

Dr Meredith Whitten

GOOD PARKS FOR LONDON 2020

Parks and the Pandemic



SUPPORTED BY
MAYOR OF LONDON



Today's Speakers



Tony Leach
Chief Executive
Parks for London

Chair



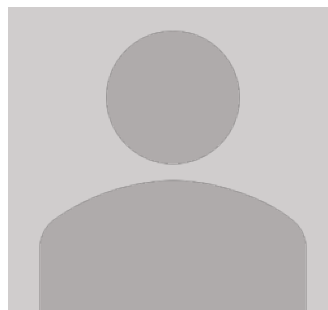
Martin Kelly
Head of Planning
GL Hearn

Speaker



Dr Meredith Whitten
ESRC Postdoctoral Fellow
London School of Economics

Speaker



Top Scoring London Borough

Speaker



Tomos Joyce
Guidance Manager
Cross River Partnership

Moderator



Rachael Aldridge
Project Officer
Cross River Partnership

Chat Moderator



Joshua West
Communications Manager
Cross River Partnership

Tech Lead



Today's Agenda

1. GL Hearn:
Sponsors Welcome
+ Introduction

2. LSE: Keynote
Speech

3. Top Scoring
Borough

4. Parks for
London: Parks and
the Pandemic

Have your say:
Q&A session after the
presentation

Sponsors Welcome and Introduction

Martin Kelly, GL Hearn



Parks for
London



**CROSS RIVER
PARTNERSHIP**
Delivering London's Future Together



Department
for Environment
Food & Rural Affairs

GL Hearn - creating the communities people want to be a part of

A leading UK-based planning, development and corporate advisory consultancy nearly 100 years in the making.

We work with public and private sector clients to define the vision for the destinations people want to invest in and secure successful planning outcomes.

Our Planning team comprises 60 specialist planners and technical experts, providing national coverage and local expertise.



Seething Lane Gardens, Ten Trinity Square



"Seething Lane Garden is a good example of our work protecting and conserving historic green spaces in the City. It's a famous site which will once again become part of the network of gardens, churchyards, plazas. Gardens like this play an important role in the lives of our residents."

Graeme Smith, Chairman of the Open Spaces & City Gardens Committee, City of London Corporation.





Keynote Speech

Dr Meredith Whitten, LSE



THE LONDON SCHOOL
OF ECONOMICS AND
POLITICAL SCIENCE ■



Parks for
London



**CROSS RIVER
PARTNERSHIP**
Delivering London's Future Together



Department
for Environment
Food & Rural Affairs







"Investing in green space every day,
not just in times of crisis, is critical."

Dr Meredith Whitten

GOOD PARKS FOR LONDON 2020

Parks and the Pandemic



**Parks for
London**

Sponsored by



**Parks for
London**

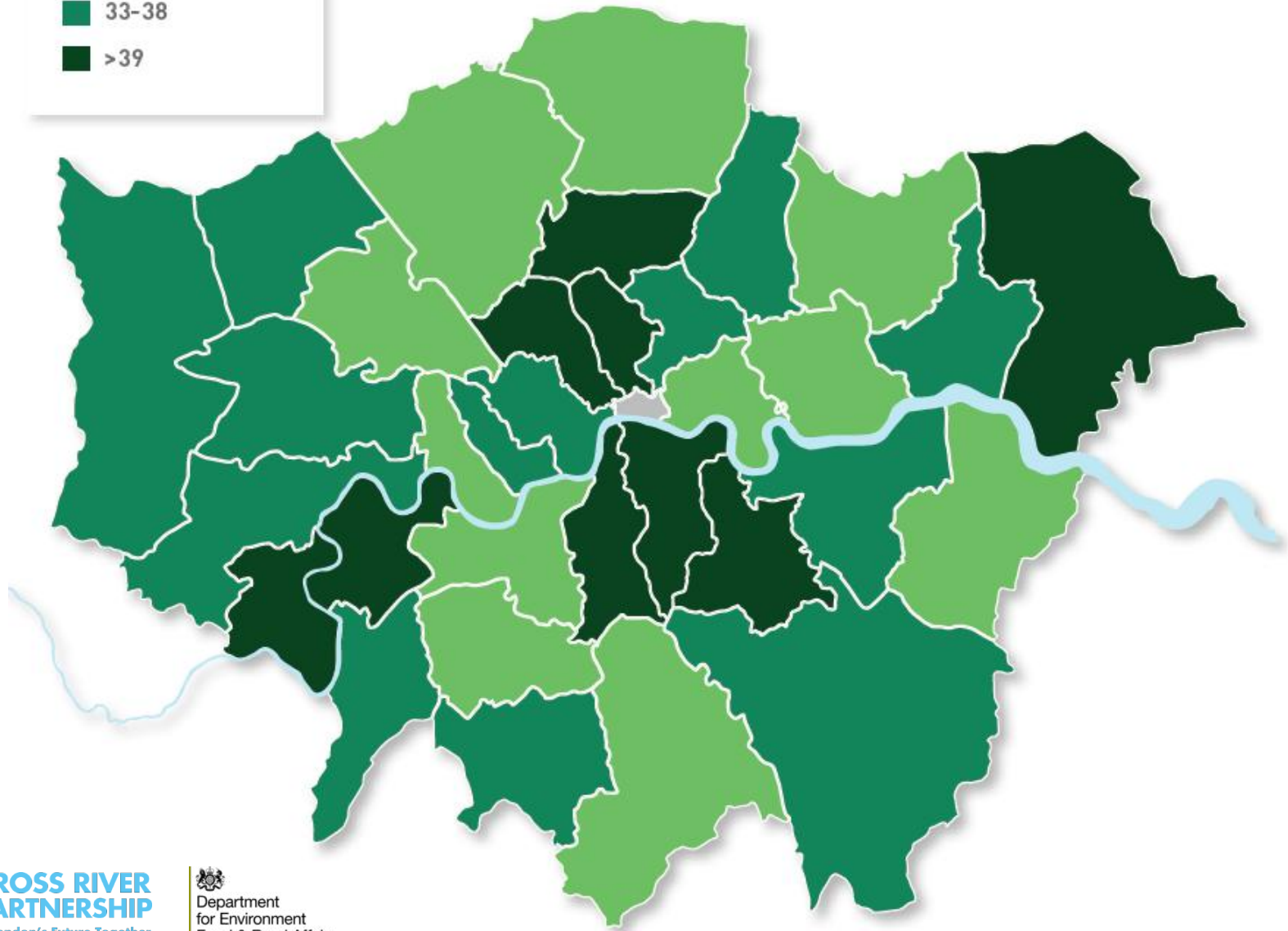


Department
for Environment
Food & Rural Affairs

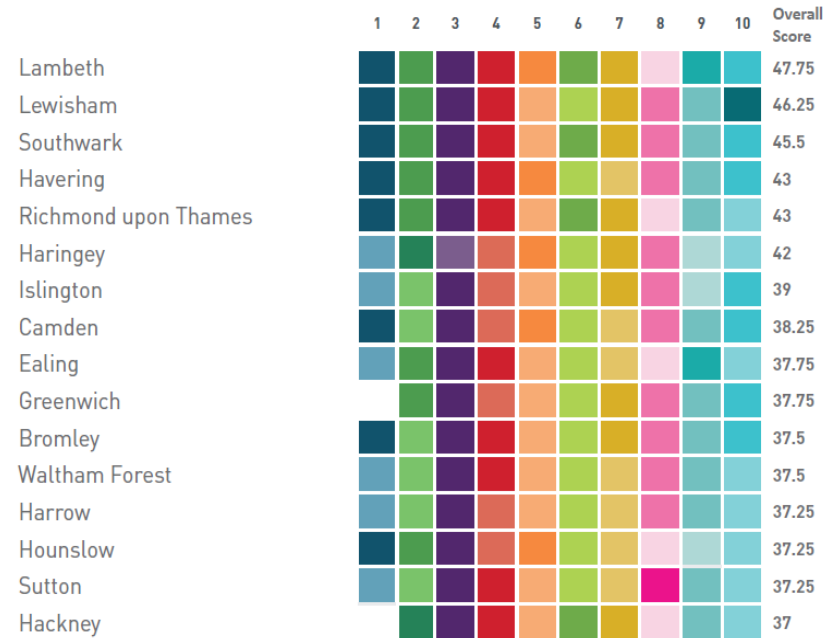
GOOD PARKS FOR
LONDON 2020

Overall Scores

- 28-32.75
- 33-38
- >39



Overall scores

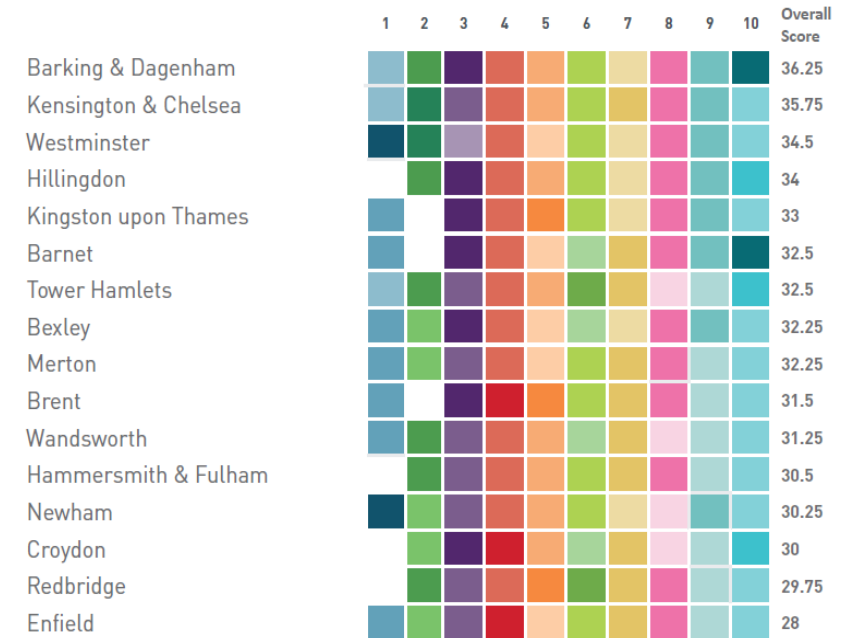


The City of London Gardens (CoL) has not been included in these scores as the data does not represent a comparable data set and cannot refer to the wider portfolio of work undertaken by the substantial portfolio of CoL Open Spaces run as charities outside the physical boundary of the Square Mile.

Higher scores are represented by darker shading of colour.



GOOD PARKS FOR LONDON 2020



A blank square indicates that a borough has either not submitted data for a criterion or the data is not available or a score has not been achieved.



Parks for London



Top Scoring Borough

Councillor Sonia Winifred, LB Lambeth



Parks for
London



**CROSS RIVER
PARTNERSHIP**
Delivering London's Future Together



Department
for Environment
Food & Rural Affairs



Good Parks for London 2020

Thank you!

**Huge thanks to our hard-working
and dedicated staff, volunteers
and stakeholder groups!**

Lambeth's Parks Service

- We manage 135 green spaces (780 acres) covering 10% of the borough; 90 are traditional parks/open spaces
- The service was insourced in 2016 alongside a 50% cut in the budget
- 29 stakeholder groups; Lambeth Parks Forum
- FoE Report 2020 lists Lambeth as the local authority with the highest number of E rated neighbourhoods in the country (areas most deprived of green space)
- Combines with high levels of households without gardens to emphasise importance of open spaces

Good Parks for London Report

- Some areas of recent improvement for Lambeth:
 - New Biodiversity Action Plan
 - Significantly increased number of parks with management plans including BAP objectives
 - New Integrated Pest Management Policy (weeds)
 - Continued increase in Green Flags (18)
 - Big push on London in Bloom entries (14 Gold/S.Gilts)
 - New 5-year Strategic Plan
 - 93% of fleet is 'green' and 40% of handheld power tools are now electric
 - New Events Policy based on P4L template and new Green Events Guide

Eardley Road Sidings

User Survey 2019

- Most significant improvement
- New annual user survey – 453 F2F surveys
- 98% of users satisfied with our parks
- 97% satisfied with horticulture
- 96% satisfied with safety and security
- 95% satisfied with cleanliness
- Only 53% satisfied with toilets

Clapham Common

Capital Investment Plan 2020-25

- £27m of proposed projects, 56 sites
- £13m allocated corporately
- £9m external funding anticipated
- New Social Fund offers potential
- Focus is on existing infrastructure

Kennington Park

Good Parks for London 2020 Report Launch

Parks and the Pandemic

Tony Leach, Parks for London



Parks for
London



Parks for
London



**CROSS RIVER
PARTNERSHIP**

Delivering London's Future Together



Department
for Environment
Food & Rural Affairs

"Investing in green space every day,
not just in times of crisis, is critical."

Dr Meredith Whitten

GOOD PARKS FOR LONDON 2020

Parks and the Pandemic



**Parks for
London**

Sponsored by



**Parks for
London**



Coronavirus UK: Jenrick has 'made it clear' parks must stay open

Communities secretary also clarifies that close family members can attend funerals

- [Coronavirus - latest updates](#)
- [See all our coronavirus coverage](#)

Baron Walawalkar

at 18 Apr 2020 18.53 BST



117



▲ 'People need parks,' Robert Jenrick said at today's Downing Street media briefing. Photograph: Pippa Fowles/10 Downing Street/Crown Copyright/PA

Robert Jenrick, the housing, communities and local government secretary has “made it clear” to councils that they must keep parks open during the coronavirus lockdown, although he sidestepped calls to apologise for his Herefordshire home.

18th April 2020



Parks for
London



COVID-19

Guidance and support for land managers, in line with the latest government guidance

Last updated 12th November 2020

From 5th November new [national restrictions](#) will be in place, until 2nd December 2020 (though this may be extended).

What will this mean for managing parks and green spaces from 5th November?:

- 1 People can go outside for specific purposes such as **'to exercise outdoors or visit an outdoor public place'**; though this should only be: alone, with others from the same household/support bubble, or, when on your own, with 1 person from another household (note: Children under 5, as well as disabled people dependent on round-the-clock care are not counted towards the limit on two people meeting outside).
- 2 Sport and leisure facilities, such as leisure centres, swimming pools, gyms and sport clubs, will have to close during the national restrictions. This applies to both indoor and outdoor facilities.

Please follow these instructions to keep our parks open



Keep dogs on a lead and help protect everyone



Southwark
Council
southwark.gov.uk

HELP US TO KEEP YOUR PARK OPEN

**Stay at home
Save lives
Protect the NHS**

- Use the park for your daily exercise only
- Do not use parks for sitting, picnics, sunbathing or BBQs
- All playgrounds, skate parks, sports facilities and outdoor gyms are closed
- Always keep a safe distance of 2m
- Please be considerate of other park users and workers

Lambeth



With warm weather predicted this weekend the Government has advised us all to **Stay at home**

If you do use Manor Park for your permitted exercise or essential travel please remember.....



STAY
2M
APART

Do not linger
or block
pathways

No picnics or
sunbathing
Dogs on leads

STAY HOME - PROTECT THE NHS - SAVES LIVES

Parks and open spaces are for essential exercise only

- No sunbathing
- No picnics or BBQs
- Playgrounds, sports areas and outdoor gyms are CLOSED

Help to keep yourself and others safe



HELP SAVE LIVES

We do not want to close our parks but will be forced to take action if these rules are not followed.

Ealing
www.ealing.gov.uk





Parks for
London





Parks for
London

 **CROSS RIVER
PARTNERSHIP**
Delivering London's Future Together

 Department
for Environment
Food & Rural Affairs



Gunnersbury Park cafe







Parks for
London





Parks for
London







Parks for
London

 **CROSS RIVER
PARTNERSHIP**
Delivering London's Future Together

 Department
for Environment
Food & Rural Affairs







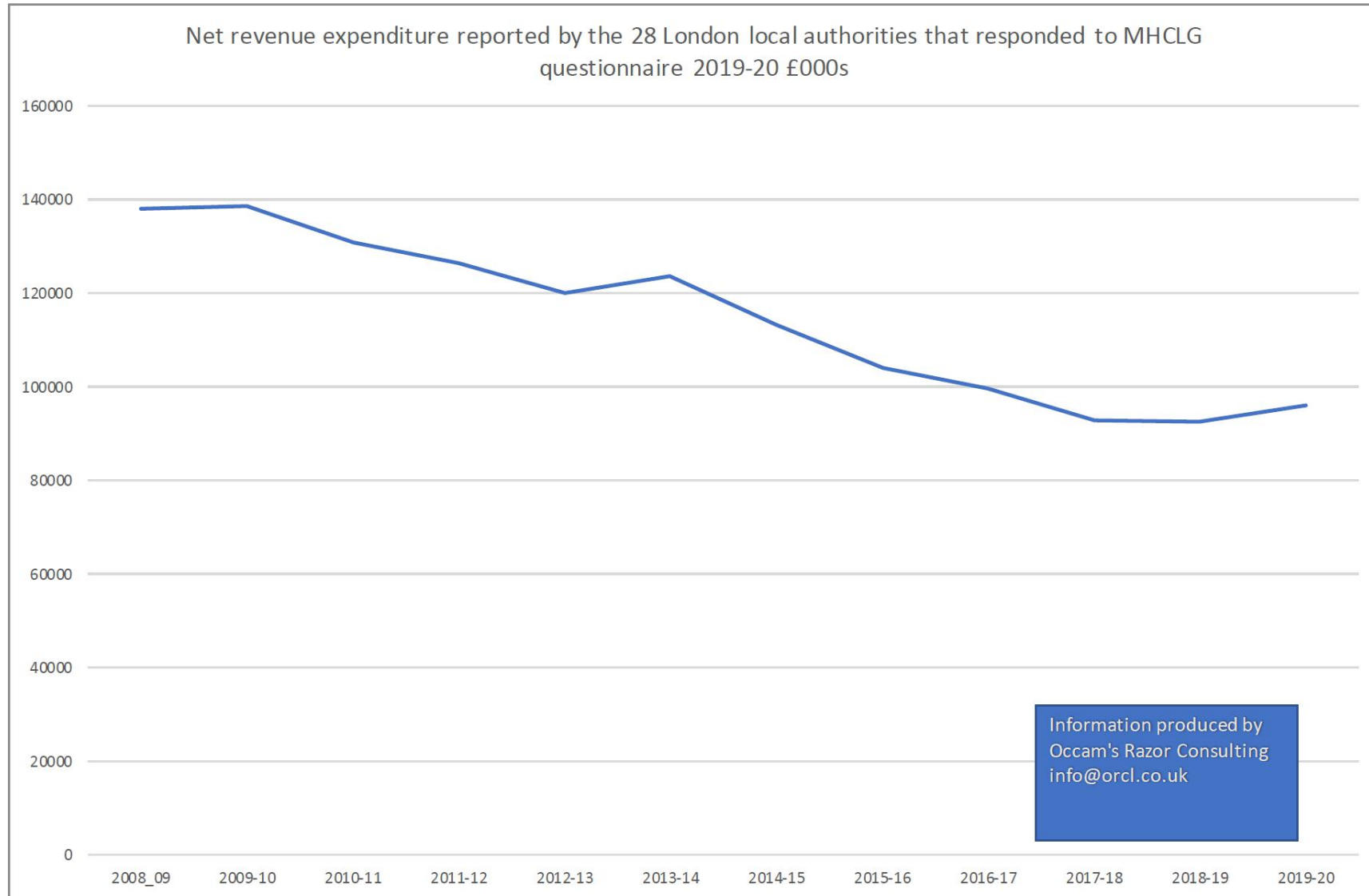




Parks for
London

 **CROSS RIVER
PARTNERSHIP**
Delivering London's Future Together


Department
for Environment
Food & Rural Affairs



"Investing in green space every day,
not just in times of crisis, is critical."

Dr Meredith Whitten

GOOD PARKS FOR LONDON 2020

Parks and the Pandemic



**Parks for
London**

Sponsored by



**Parks for
London**



SUPPORTED BY
MAYOR OF LONDON

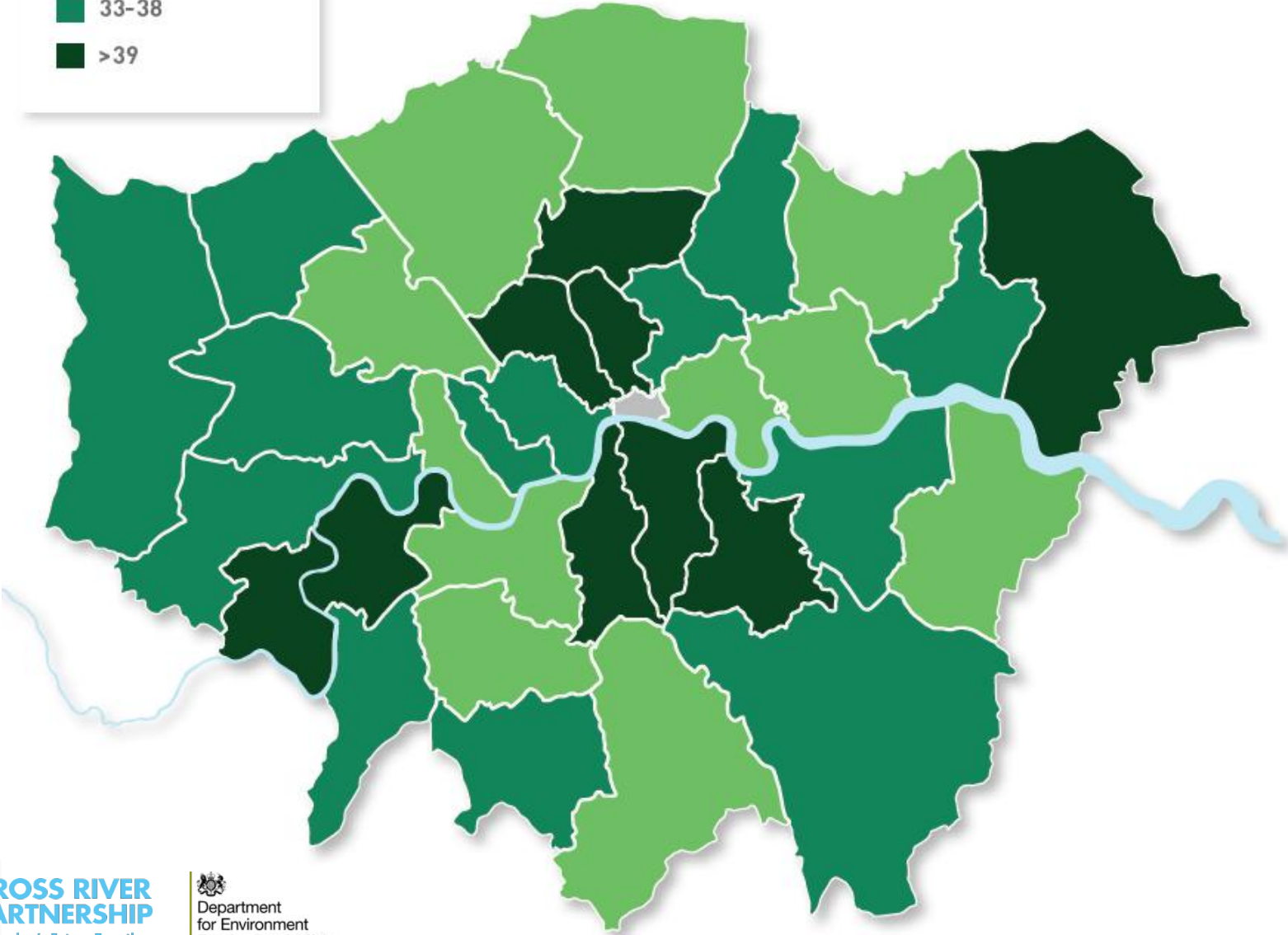
LONDON GREEN SPACES COMMISSION REPORT



GOOD PARKS FOR
LONDON 2020

Overall Scores

- 28-32.75
- 33-38
- >39





Parks for
London

Thank you

[https://parksforlondon.org.uk/
tony.leach@parksforlondon.org.uk](https://parksforlondon.org.uk/tony.leach@parksforlondon.org.uk)

26th November 2020

Questions?



Park-led Recovery

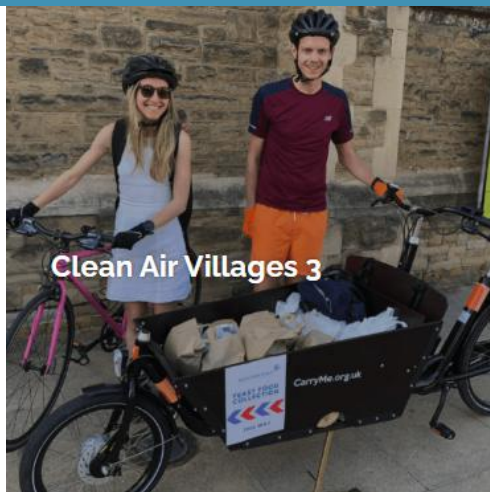


**CROSS RIVER
PARTNERSHIP**
Delivering London's Future Together



Department
for Environment
Food & Rural Affairs

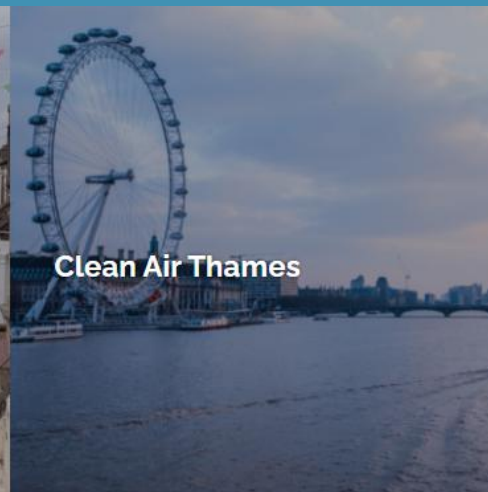
Cross River Partnership



Clean Air Villages 3



Healthy Streets Everyday



Clean Air Thames



Central London Sub-Regional Transport Partnership



EV Fleet-Centred Local Energy System (EFLES)



Creative and Digital Industries



Chelsea 2030 - Cadogan 10-Year Stewardship Strategy



Lighting London Sustainably



**CROSS RIVER
PARTNERSHIP**

Delivering London's Future Together



Department
for Environment
Food & Rural Affairs

Thank You!



Tony Leach
Chief Executive
Parks for London
tony.leach@parksforlondon.org.uk



Martin Kelly
Head of Planning
GL Hearn
Martin.Kelly@glhearn.com



Dr Meredith Whitten
ESRC Postdoctoral Fellow
London School of Economics
meredith@meredithwhitten.com



Councillor Sonia Winifred
Cabinet Member for Equalities and Culture
London Borough of Lambeth
swinifred@lambeth.gov.uk



Tomos Joyce
Guidance Manager
Cross River Partnership
tomosjoyce@crossriverpartnership.org



www.parksforlondon.org.uk
www.crossriverpartnership.org



Search 'Cross River Partnership' in YouTube



@ParksforLondon
@CrossRiverPship



[linkedin.com/company/london-parks-&-green-spaces-forum/](https://www.linkedin.com/company/london-parks-&-green-spaces-forum/)
[linkedin.com/company/cross-river-partnership/](https://www.linkedin.com/company/cross-river-partnership/)



ParksforLondon



<https://parksforlondon.org.uk/opportunities/news/>
www.crossriverpartnership.org/newsletter