



## CLSRTP-Funded Project Statistics for financial year 2021 to 2022

- 14 project meetings held
- 6 quarterly meetings held
- 4 inception meetings held
- 5 guidance documents published or due to be published
- 27 senior transport officers engaged with from 11 London boroughs and one international city
- £112,000 budget
- 5 presentations at CRP webinars, 4 more planned

## Themes addressed

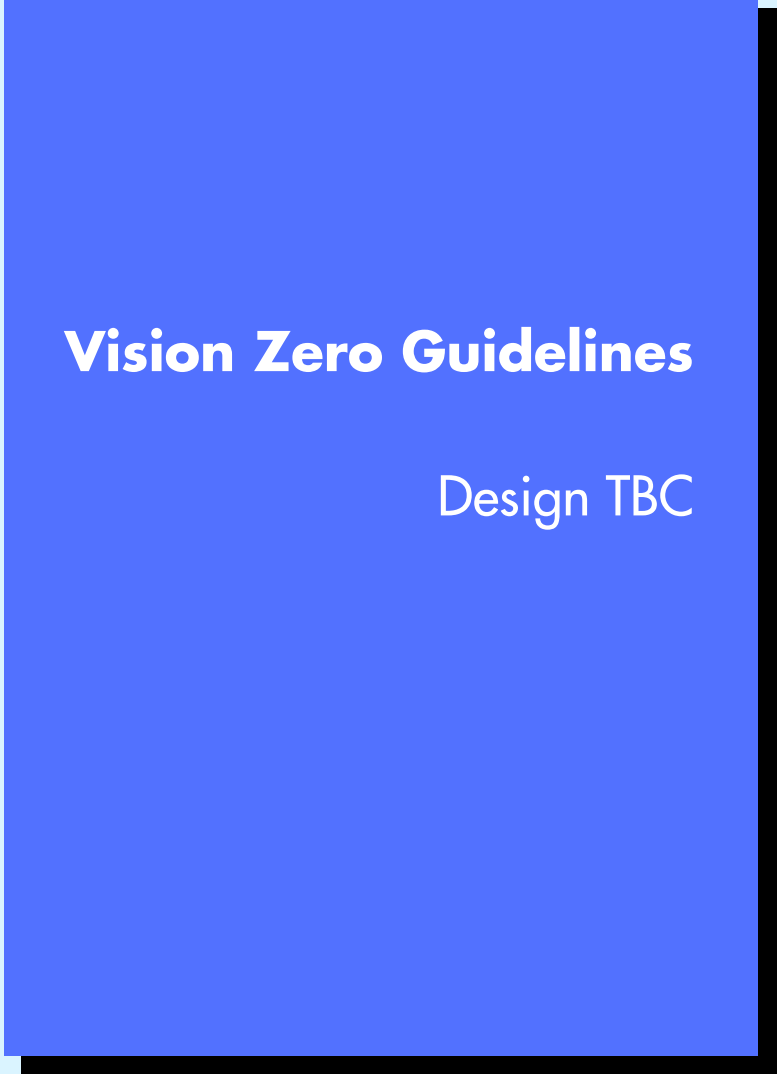
- Green recovery from Covid-19
- Accessibility, mobility justice and inclusivity
- Supporting policy goals such as Vision Zero and Net Zero
- Supporting landowners, businesses, residents and local authorities in green decision-making
- The importance of maintenance, monitoring and planning
- Zero-emission cities: including freight, EVs and active travel
- The importance of greening for climate resilience
- The potential for river freight
- The Healthy Street Indicators and how to achieve them
- International best practice
- The future of the city: planning, policy, climate and people

# 1. Highways & Footways Accessibility Guidelines



- Report published in January 2022
- Featured in CRPs Connect 4 webinar series
- Promoted by the consultants: award-winning architects DSDHA and consultants David Bonnett Associates
- Covers new and innovative areas of policy such as neurodivergence and women's safety

# 2. Vision Zero Guidelines



- Steer appointed to produce Vision Zero Guidelines Report
- Scheduled completion: 14th April
- The report takes a data science-based approach, producing recommendations from key case studies
- Oslo's Department for the Environment attended a discussion to share their experience of achieving Vision Zero

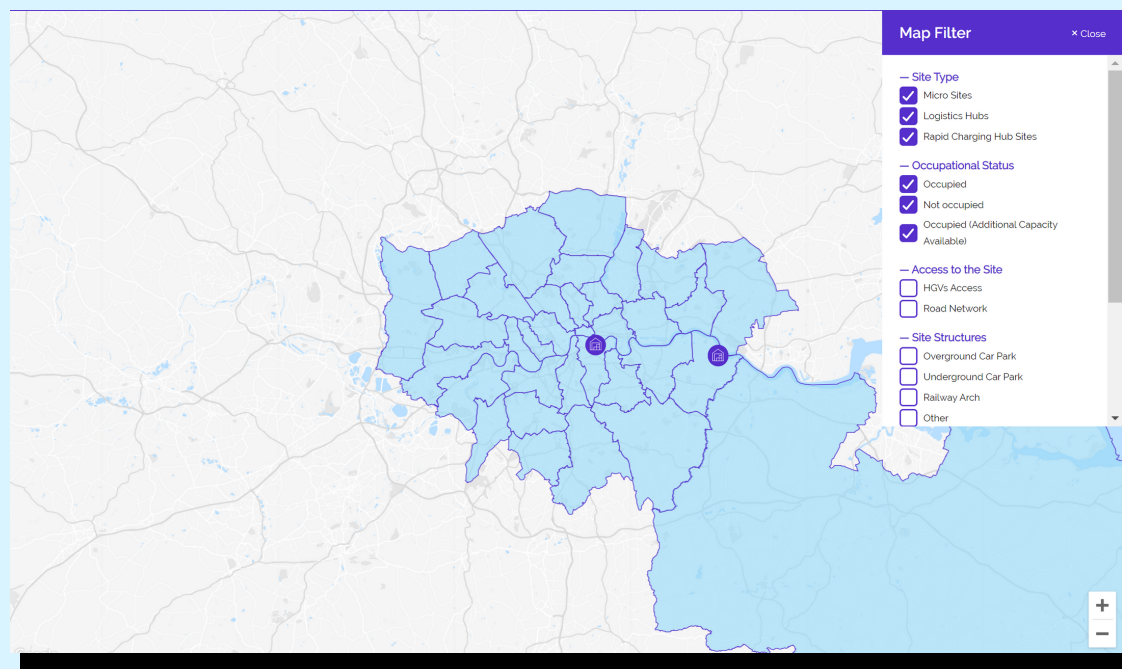
# 3. Funding Healthy Streets Assets



- Momentum and Volterra appointed
- Scheduled completion: 25th May
- Structure: Interviews, case studies, report
- Supports the previous two reports with long-term management of schemes
- Planned round-table session with key developers and landowners



## 4. Urban Logistics Hub Map



- The [website](#) had a major update in March 2022
- Currently in discussion with major London landowners about adding sites
- Two new sites added to the map in Bexley
- Enabled google analytics
- Most popular method of finding website is by organic searches: reaching beyond established audience

## 5. Electric Vehicle Rapid Charging Hubs Guidance for Landowners and Local Authorities



- [Report](#) published in October 2021
- Featured in Citti Magazine
- Produced in-house by Cross River Partnership
- Collates current and ever-changing design, legislative, policy and technical guidance along with case studies such as TfL's Glass Yard Woolwich

## 6. The Lived Experience of Our Streets: A People First Vision



- [Report](#) published October 2021
- Architects NOOMA with Momentum and Centric Lab appointed
- Examines how to create a more equitable and accessible street for all users across London, balancing competing interests
- Focuses on four street typologies
- Published as a physical document in 2022 and featured in CRP Webinar

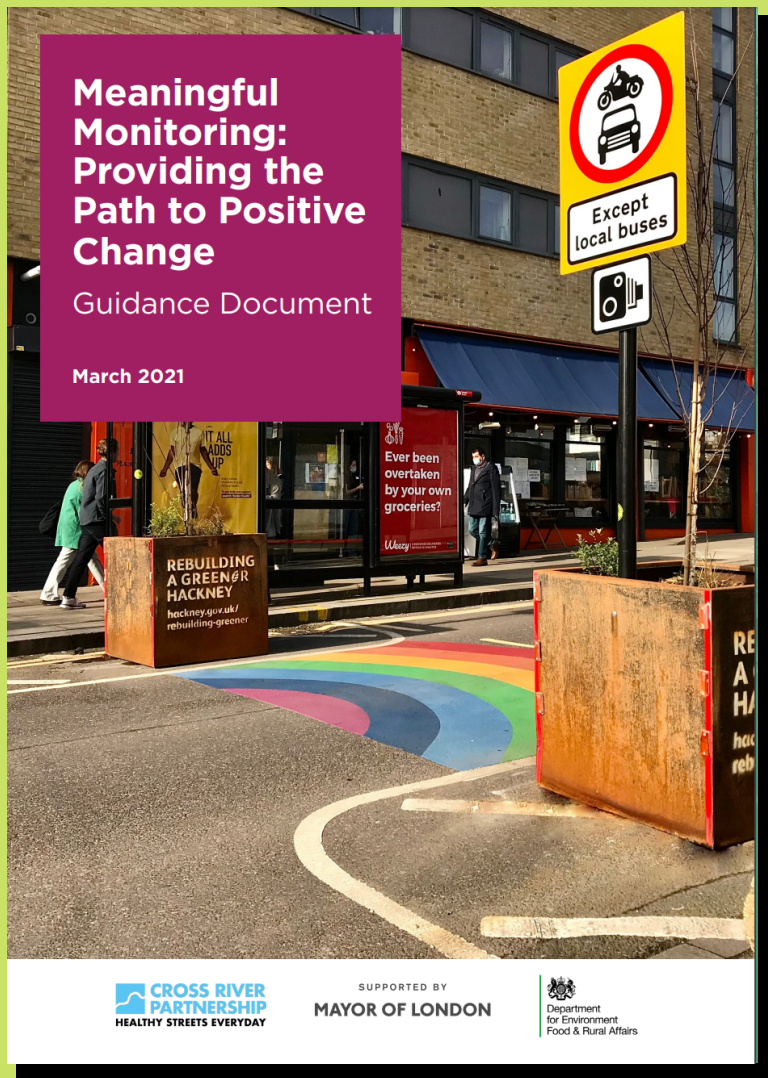
**7. Places for All Social Media Campaign**  
**#OurHealthyStreets**



- Campaign launched in March 2021
- Cross-sector media campaign to educate residents, businesses, communities and visitors about the benefits of LTNs
- Awareness of LTNs and their role in the future of street space

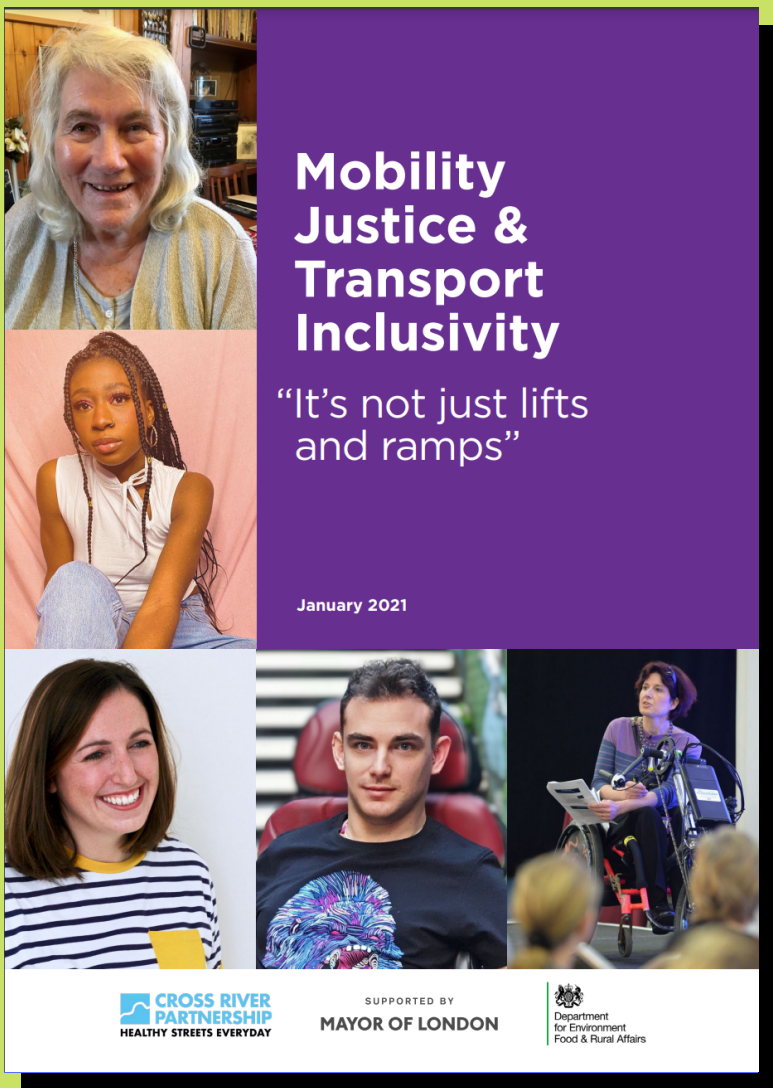


7. Meaningful Monitoring: Providing the Path to Positive Change



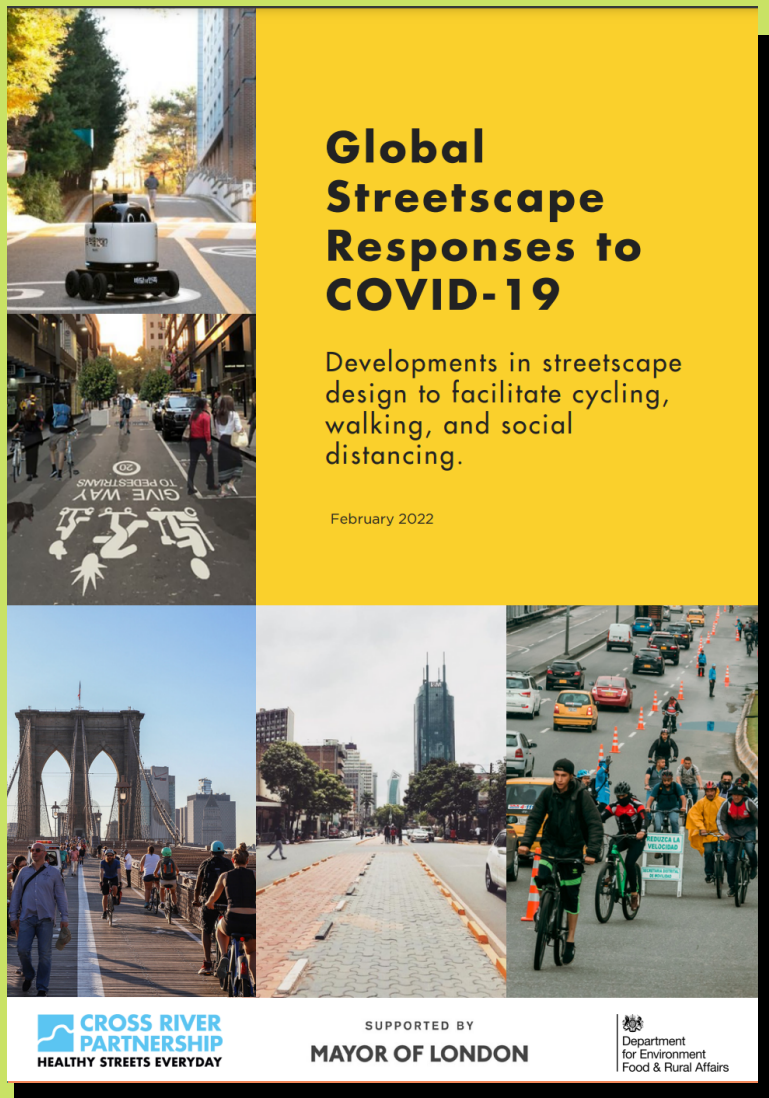
- Report published in March 2021
- Aimed at Local Authorities, Business Improvement Districts (BIDs), Landowners and Policy Makers.
- Provides best practice guidance that builds on CRP's own successful monitoring and data analysis programmes
- The importance of monitoring for a green recovery from Covid-19, focusing on low-emission schemes and active travel

8. Mobility Justice & Transport Inclusivity: "It's not just lifts and ramps"



- Report published in January 2021
- Examines the issues of disability, inclusive mobility and mobility justice and their importance in society for the transition towards environmental sustainability
- Examines structural or planetary levels of inequalities, and/or mobility inequalities that are represented by the human body, such as gender, race, sexuality and disability

9. Global Streetscape Responses to Covid 19



- Report Published February 2022
- Explores the streetscape responses to Covid-19 of seven cities around the world: London, New York, Nairobi, Bogotá, Seoul, Melbourne, and Brussels
- Looks at funding, outcomes and future strategies of each city

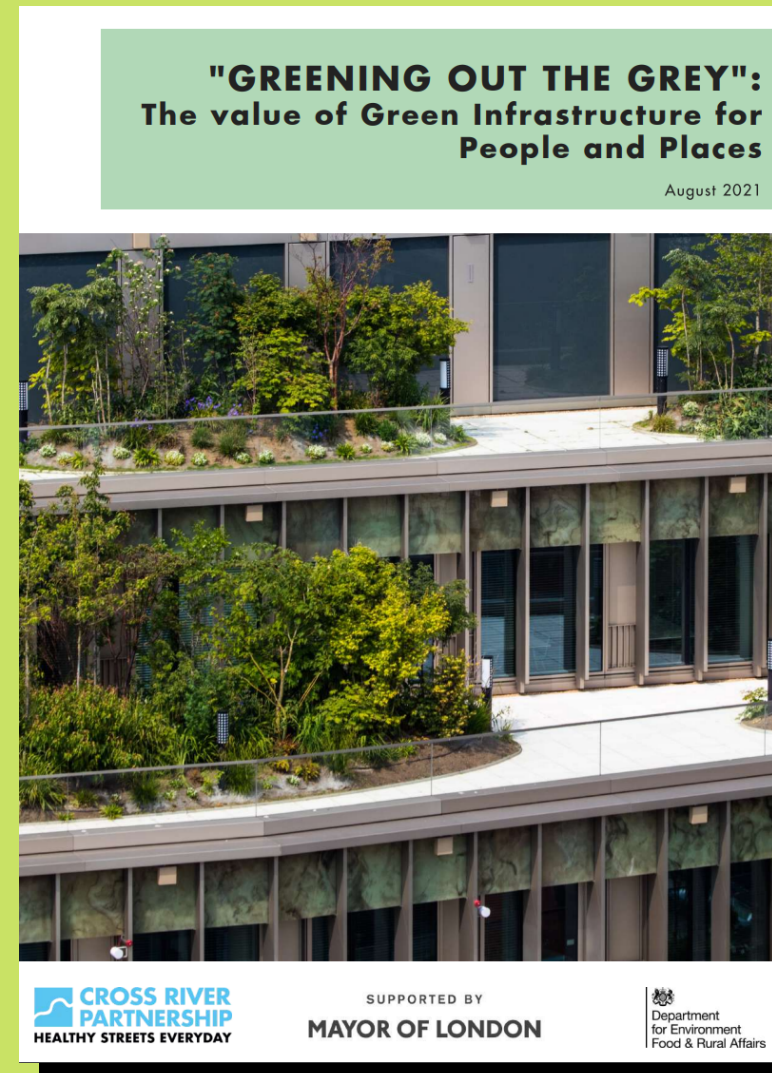


## 10. Making School Streets Healthier: Learning from temporary and emergency closures



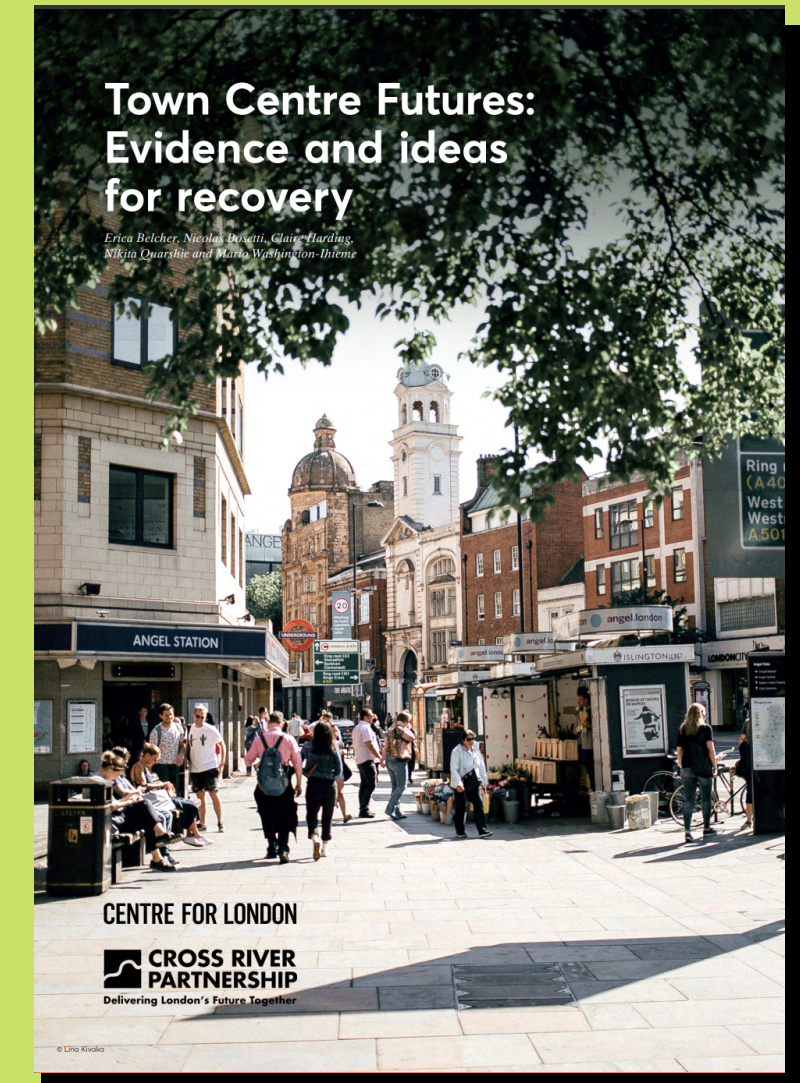
- Report published in March 2022
- The report sets out key findings from the close observation of two School Streets, which include significant reductions in motor vehicle traffic, increased cycling and improvements in several Healthy Streets Indicators

## 11. Greening out the Grey: The Value of Green Infrastructure for People and Places



- Report published in August 2021
- Addresses the need to recognise London's changing climate: extreme heat, flooding, biodiversity and poor air quality
- Green infrastructure can address these issues and improve cities and help us achieve a green recovery from Covid-19

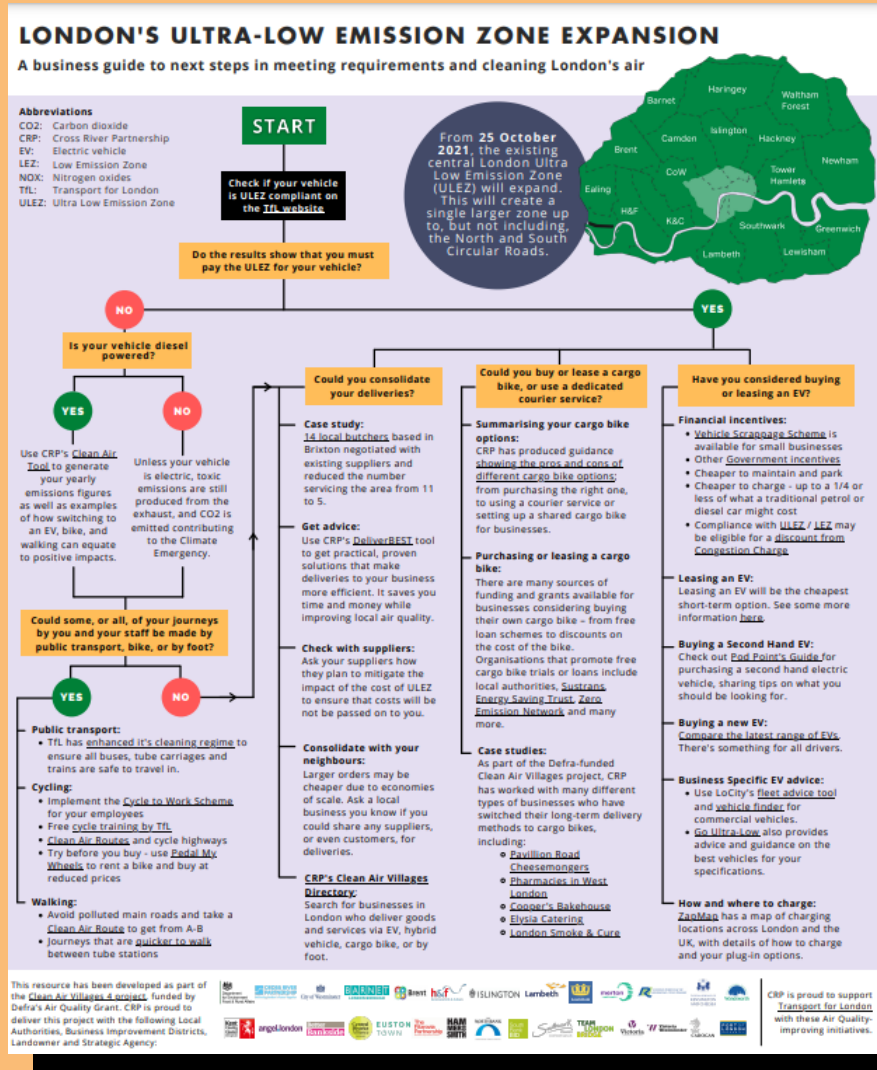
## 12. Town Centre Futures: Evidence and Ideas for Recovery



- Report published March 2021
- In collaboration with Centre for London
- The report contains thematic evidence, case studies and recommendations to support a green recovery from Covid-19



## 13. ULEZ Guidance



- Guidance published in June 2021
- Includes tailored advice for businesses and residents for both ULEZ and LEZ zones.

## 14. Light Freight: Design Solutions for Thames Freight Infrastructure



- Report published March 2022
- Commissioned Beckett Rankine in partnership with the Port of London and Thames Estuary
- Review of seven piers functionality for river freight, technical concepts proposed for adaptation of the piers

## 15. Project Butler's Wharf and Dartford Pier Route Monitoring



- Report published March 2022
- Commissioned consultants EMSOL
- The report analyses a river freight trial aiming to take decrease pollution on roads
- This trial was established to attribute air and noise pollution to specific vessels to help to understand the real-world pollution impact of moving freight to inland waterways in London.